



## GT2-H12K

Sensor Head, High-precision Type



## SPECIFICATIONS

Model		GT2-H12K
Detection system		Scale Shot System, absolute (no tracking errors) type
Measuring range		12 mm
Resolution		0.1 $\mu\text{m}$
Indicated accuracy		1 $\mu\text{m}$ (p-p) <sup>*1</sup>
Measuring force	Downward mounting	1.0 N <sup>*2</sup>
	Side mounting	0.9 N <sup>*2</sup>
	Upward mounting	0.8 N <sup>*2</sup>
Sampling cycle		1 ms
Mechanical response		10 Hz <sup>*1</sup>
Operation indicator light		2-colour LED (red, green)
Environmental resistance	Enclosure rating	IP67 (IEC)
	Ambient temperature	-10 to +55 °C (No freezing)
	Relative humidity	35 to 85 % RH (No condensation)
	Vibration resistance	10 to 55 Hz, Double amplitude 1.5 mm, 2 hours in each of the X, Y, and Z directions
	Shock resistance	1,000 m/s <sup>2</sup> (IEC60068-2-27)
Materials	Main body	Main body case: die-cast zinc, Indicator: polyarylate (PAR)
	Dust boot	NBR
	Contact	SUS304, cemented tungsten carbide <sup>*3</sup>
Sensor head cable		Optional (connect to the M8 connector)
Weight		Approx. 95 g (not including cable)

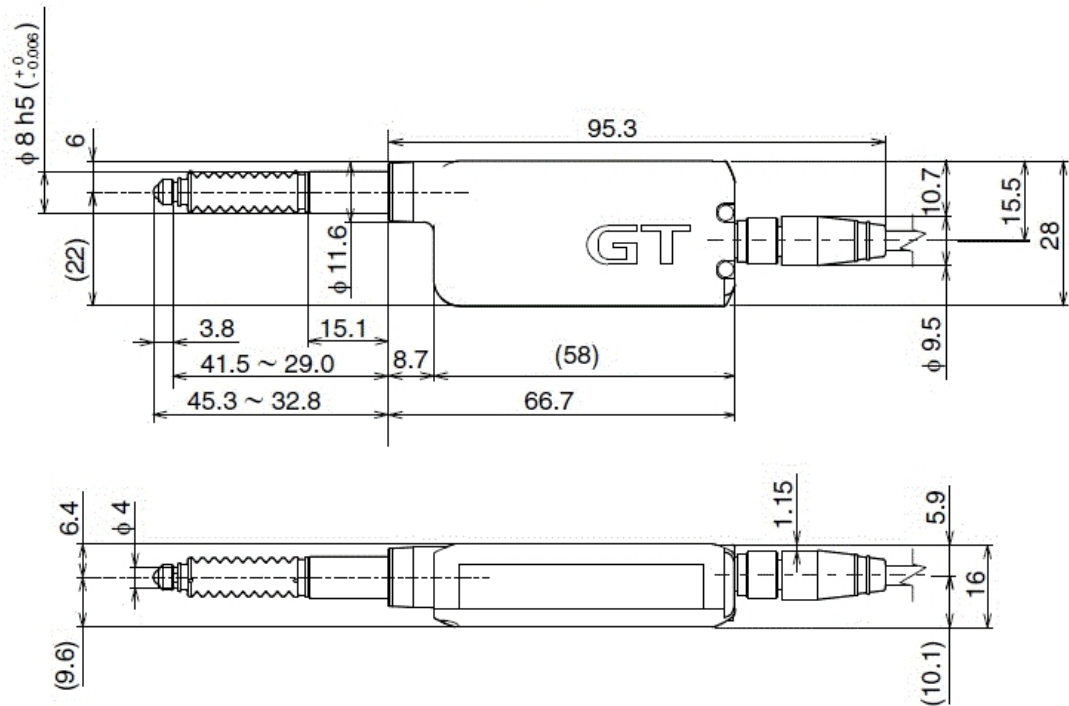
<sup>\*1</sup> Value when the ambient temperature is 20 °C.  
<sup>\*2</sup> Representative value at the centre of the measuring range. Please note that the measuring force varies by the installation state of the dust boot.  
<sup>\*3</sup> Contacts are available as options sold separately.

Dimensions

\* Download CAD file or product manual for larger image/text and more detail.

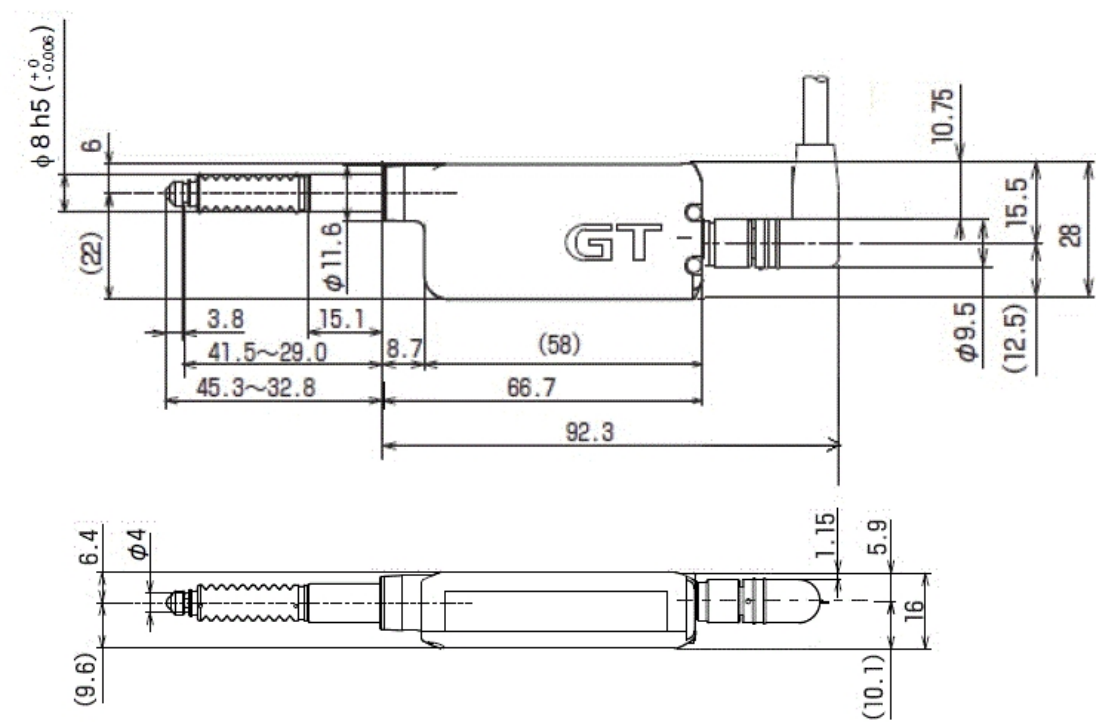
■ GT2-H12K(L)/H12(L)

When GT2-CH2M/5M/10M/20M is mounted



Unit: mm

When GT2-CHL2M/5M/10M/20M is mounted



Unit: mm

Reference

There is no dust boot for GT2-H12KL/H12L.