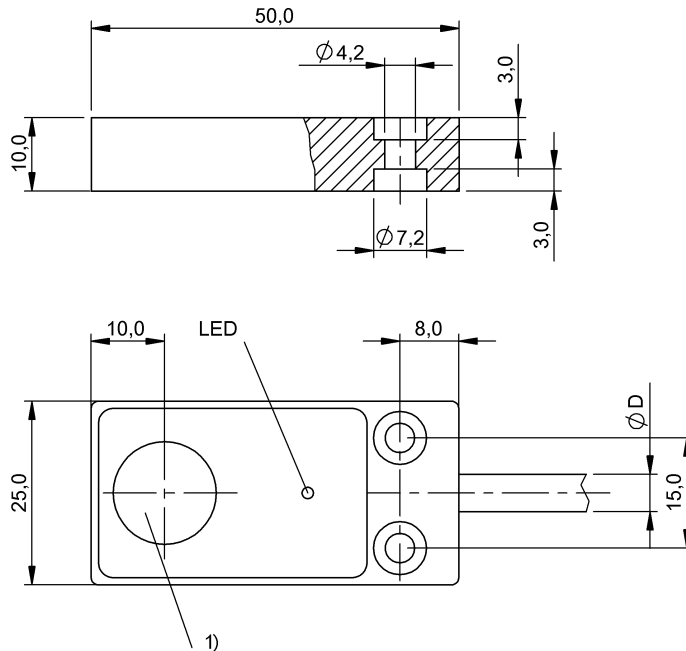


BES 516-133-SA3-C-PU-04  
BES032R



1) Sensing surface



## Display/Operation

Function indicator	yes
Power indicator	no

## Electrical connection

Cable diameter D	4.60 mm
Cable length	4 m
Conductor cross-section	0.25 mm <sup>2</sup>
Connection type	Cable, 4.00 m, PUR
Number of conductors	4
Polarity reversal protected	yes
Short-circuit protection	yes

## Electrical data

Hysteresis H max. (% of Sr)	15.0 %
Load capacitance max. at Ue	0.5 µF
MTTF (40 °C)	1015 a
No-load current I <sub>o</sub> max., undamped	20 mA
Operating voltage U <sub>b</sub>	10...30 VDC
Output resistance R <sub>a</sub>	2.2 kOhm + D + LED
Pollution degree	3

Protected against miswiring	yes
Rated insulation voltage U <sub>i</sub>	75 V DC
Rated operating current I <sub>e</sub> DC	200 mA
Rated operating voltage U <sub>e</sub> DC	24 V
Rated short circuit current	100 A
Ready delay t <sub>v</sub> max.	10 ms
Repeat accuracy max. (% of S <sub>r</sub> )	5.0 %
Residual current I <sub>r</sub> max.	80 µA
Switching frequency	500 Hz
Utilization category	DC -13
Voltage drop static max.	3.5 V

## Environmental conditions

Ambient temperature	-25...70 °C
Protection type IEC 60529	IP67

## Functional safety

Diagnostic coverage	0 %
Functional safety	no
Mission Time	20 a

## BES 516-133-SA3-C-PU-04 BES032R

### General data

Approval/Conformity	CE EAC
Basic standard	IEC 60947-5-2

### Material

Housing material	Aluminum
Material jacket	PUR
Material sensing surface	PBT

### Mechanical data

Dimension	50 x 25 x 10 mm
Installation	for flush mounting

### Output/Interface

Switching output	PNP Normally open/Normally closed (NO/NC)
------------------	-------------------------------------------

### Range/Distance

Assured operating distance Sa	4.5 mm
Range	5.6 mm
Rated operating distance Sn	5.6 mm
Ripple max. (% of Ue)	15 %
Temperature drift max. (% of Sr)	10 %

### Remarks

The sensor is functional again after the overload has been eliminated.

For further information on MTTF/B10d, please refer to the MTTF / B10d Certificate.

Specification of the MTTF value and the B10d value do not represent any binding quality and/or life expectancy guarantees.

### Wiring Diagram

