

Secure and reliable, 108 Mbps wireless connectivity with PoE, for small to medium businesses. This innovative access point provides advanced security features including WPA2, AES, support for multiple SSIDs, VLANs and Rogue AP detection making it a true enterprise-class solution.

OVERVIEW

The 3Com® Wireless 7760 11a/b/g PoE Access Point is a cost-effective dual band, Power over Ethernet (PoE) wireless solution for small and medium enterprises. Configurable, this access point can operate at IEEE 802.11a or can be used as an IEEE 802.11b/g access point.

With the latest advanced security features such as Wi-Fi Protected Access (WPA/ WPA2), Wired Equivalent Privacy (WEP) and Open system this access point (AP) provides ultra-fast speeds of up to 108 Mbps in turbo mode and offers superior long-range connectivity with eXtended range (XR) technology. This new access point also provides multiple SSID support and VPN passthrough along with VLAN support.

KEY BENEFITS

ENABLE WIRELESS FREEDOM

Take advantage of the freedom of high-speed networking without wires with this Wi-Fi CERTIFIED 3Com Wireless 7760 11a/b/g PoE Access Point. WLANs are an attractive solution for cost-effectively and securely extending mobile access to wired network resources and for creating full-featured networks in small to medium businesses, remote sites or at temporary locations. Each access point supports up to 64 wireless users, allowing plenty of room for growth.

PROVIDE POE DEPLOYMENT FLEXIBILITY

PoE support makes it easier than ever to overcome installation problems by eliminating the need for an AC power plug at each AP. The 3Com Baseline Switch 2924-PWR Plus or other 802.3af-compliant PoE products supply both power and data to the access points through Category 5 or 6 Ethernet cable, giving you flexible installation options in hard-to-wire or -reach locations.



KEY BENEFITS (CONTINUED)

SECURE AND PROTECT WIRELESS COMMUNICATIONS

3Com delivers enterprise-class security features to small and medium businesses. To shield wireless communications at the source, WPA2 with TKIP/AES encryption provides the latest, toughest standards-based security—WEP encryption supports legacy 802.11b wireless clients. For additional protection, this access point supports IEEE 802.1X and MAC address access control, authentication, and authorization through backend RADIUS servers.

PROVIDE FLEXIBLE SECURITY AND ACCESS CONTROL

You can configure and store up to four SSIDs with different security profiles for groups of users. IEEE 802.1Q-compliant VLAN support works with the multiple SSID feature to control access to network resources and segment user traffic.

SOLVE COMPLEX CONNECTIVITY PROBLEMS

The Wireless Distribution System bridging feature solves complex wireless connectivity problems. The access point supports both point-to-point and point-to-multipoint WDS links as well as repeater and client bridge modes for flexible network deployment.

DELIVER ENTERPRISE-CLASS FEATURES

3Com delivers superior business value by offering enterprise-class solutions without the complexity. 3Com also backs each product with global sales, service and support along with technology, financial and operational strength.

FEATURES AND BENEFITS

FLEXIBLE HIGH-SPEED CONNECTIVITY

Configurable radio support	Supports and offers IEEE 802.11a or IEEE 802.11b/g.
High-speed access	802.11a and 802.11b/g standard supports speeds up to 108 Mbps in SuperG mode.
Wi-Fi a/b/g CERTIFIED	Helps ensure interoperability with Wi-Fi CERTIFIED products from other vendors.

ROBUST SECURITY FEATURES

Encryption: WPA/WPA2, AES, TKIP and WEP	Toughest industry-standard algorithms help keep wireless transmissions private.
Multiple security profiles	Store up to eight different security settings; up to four security profiles can run at any time.
Multiple SSID support with SSID isolation	SSIDs can be bridged together or isolated.
Access control	Screens device MAC addresses to ensure that only trusted clients gain access to the WLAN.
802.1Q VLAN support	Groups users according to data or traffic requirements to segment traffic flow based on business priorities.
RADIUS server MAC-based and 802.1X AAA support	Centralizes wireless security through existing network RADIUS servers.
Rogue AP detection and logging	Identifies and logs unauthorized, potentially harmful APs for remedial action.

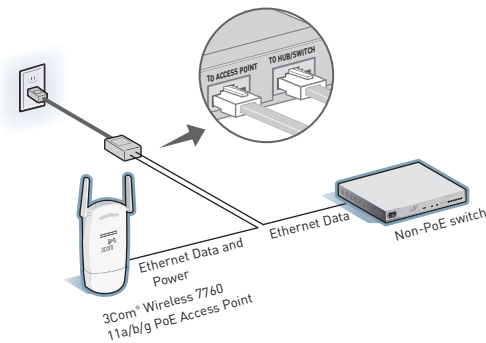
FEATURES AND BENEFITS (CONTINUED)

INSTALLATION AND MANAGEMENT CONVENIENCE

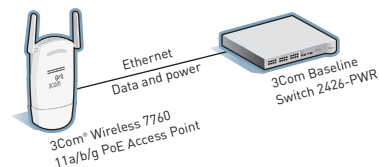
WDS bridge and repeater configuration	Multiple APs can function as bridges supporting point-to-point or multi-point modes; repeater mode extends wireless coverage.
PoE support	Expands installation options by eliminating the need for power adapters and AC outlets for APs.
Access Point Discovery program	Automatically discovers AP devices to simplify configuration and management (PCs with Windows-based operating systems only).
SNMP support	Enables the AP to be centrally managed by popular standards-based network management applications.
Auto configuration	Copies settings from compatible APs on the WLAN, simplifying and speeding setup.
SNMP support	Enables the AP to be centrally managed by popular standards-based network management applications such as SNMP v1 and v2c.
Syslog support	Enables the AP to be centrally monitored by sending data to the network Syslog server.
Web browser-based administration	Familiar browser interface lets you configure and manage APs from anywhere on the network.
Auto firmware update	Automatically checks an FTP server for available firmware updates.

PoE Support

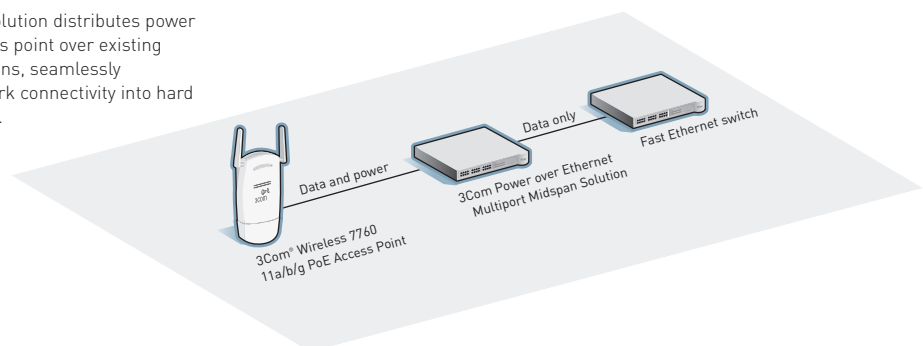
Choose from several power options to match your installation needs. First, the PoE access point can be powered with the supplied PoE adapter.



You can also power the access point using an 802.3af-compliant PoE switch. The switch provides both data and power through the Ethernet cable.



The mid-span solution distributes power to the PoE access point over existing switch connections, seamlessly extending network connectivity into hard to wire locations.



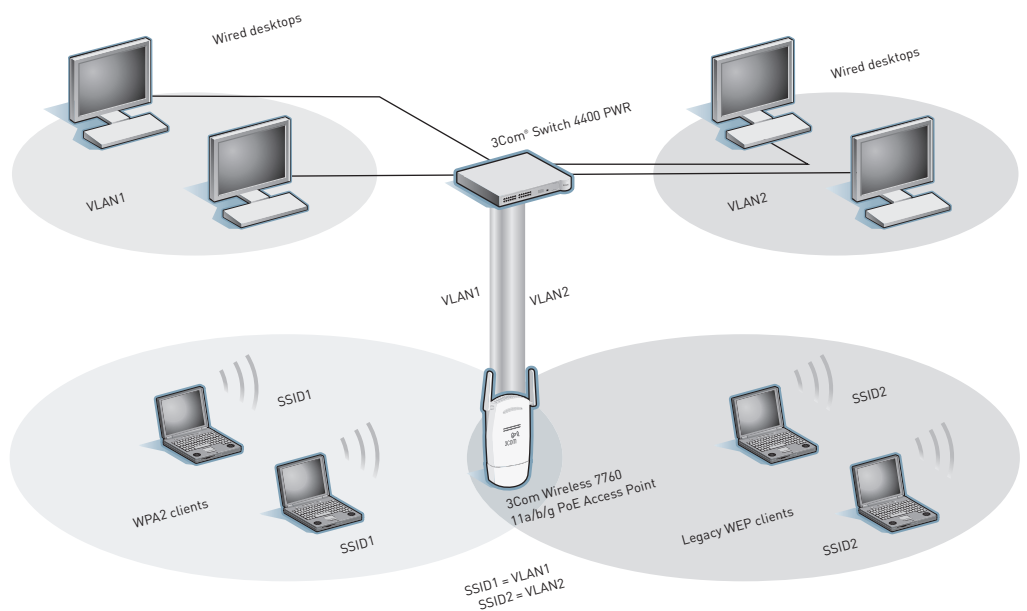
Multiple SSID Support

Multiple SSID support enables many flexible configurations, including simultaneous multiple client security schemes. You no longer need to dumb down your wireless network to support a few legacy WEP devices.



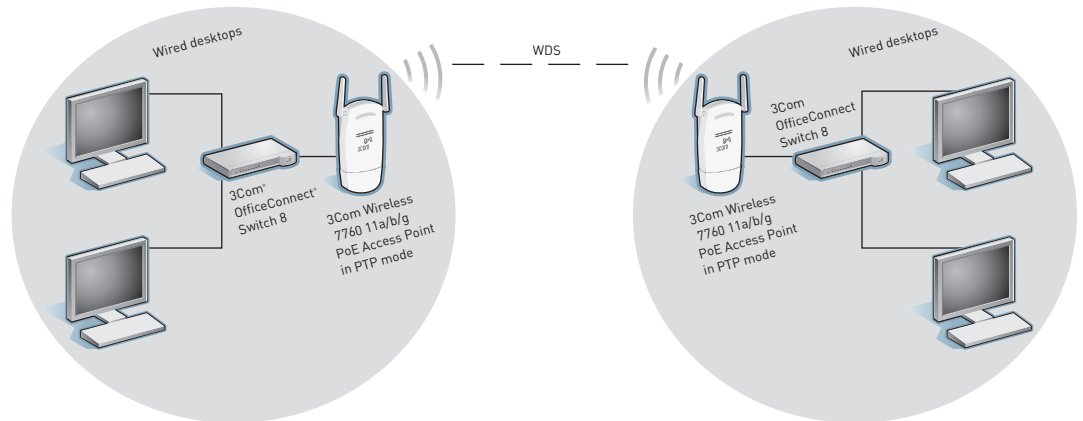
Multiple SSID and VLAN Support

With the 3Com Wireless 7760 11a/b/g PoE Access Point, a single Ethernet link supports multiple VLAN traffic tunnels.



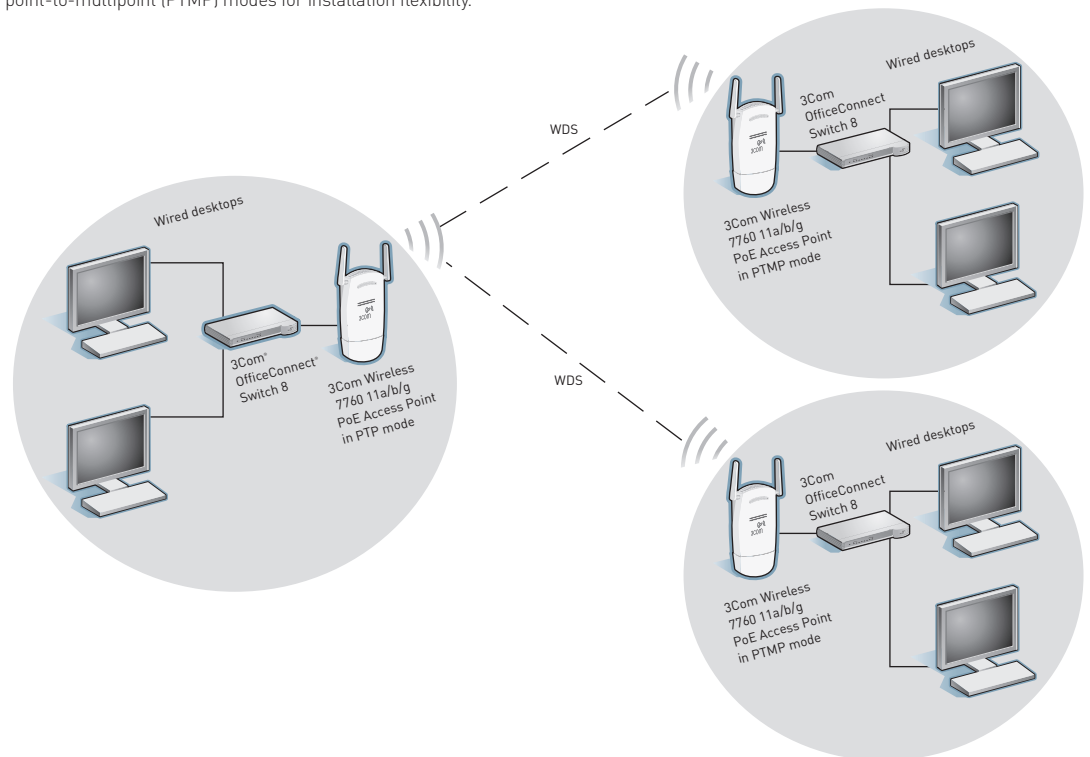
Point-to-Point WDS Link

With the 3Com Wireless 7760 11a/b/g PoE Access Point, you can connect wired LANs with a wireless WDS link. The APs act as wireless bridges, forwarding traffic between LANs.



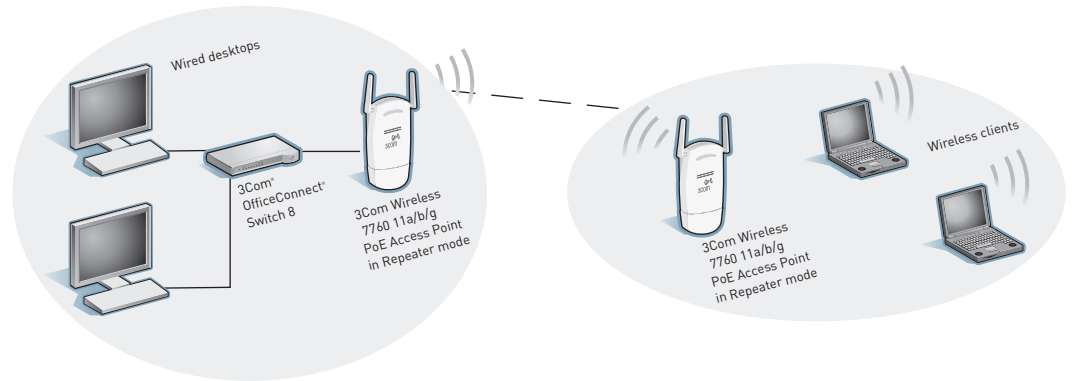
Point-to-Multipoint WDS Link

The 3Com Wireless 7760 11a/b/g PoE Access Point can function as a wireless bridge in either point-to-point (PTP) or point-to-multipoint (PTMP) modes for installation flexibility.



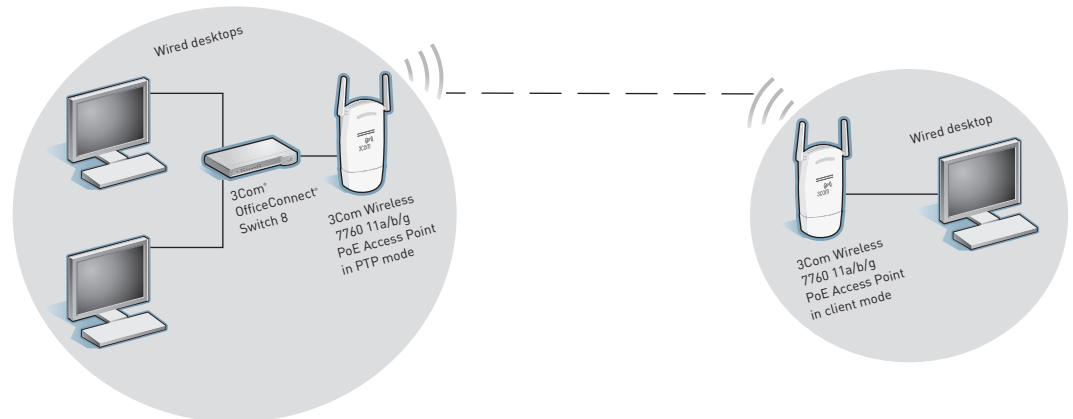
Wireless Repeater Mode

The 3Com Wireless 7760 11a/b/g PoE Access Point can also extend the range of WLANs by acting as a wireless repeater, forwarding traffic between associated wireless workstations and another AP connected to the wired LAN.



Client Bridge Mode

The 3Com Wireless 7760 11a/b/g PoE Access Point can transform an Ethernet device into a wireless device to expand connectivity options.



SPECIFICATIONS

MINIMUM SYSTEM REQUIREMENTS

Computer with an Ethernet 10BASE-T, 10/100, or 10/100/1000 interface configured for Internet communication
Operating system that supports an Ethernet connection with an IP stack (Installation CD Discovery Application requires Windows XP, 2000 or Vista)

MEDIA INTERFACES

RJ-45, IEEE 802.11a, 802.11b, 802.11g
One 10BASE-T/100BASE-TX IEEE 802.3af-compatible PoE port with auto-negotiation

DATA RATES

802.11g/a: 54, 48, 36, 24, 18, 12, 9, 6 Mbps with automatic fallback
802.11b: 11, 5.5, 2, 1 Mbps with automatic fallback

FREQUENCY BAND

802.11a: 5 GHz; 802.11b/g: 2.4 GHz

WIRELESS TRANSMIT POWER

18 dBm

USERS SUPPORTED

Up to 64 simultaneous 802.11b/g wireless users for optimal throughput

OPERATING RANGE

802.11a: up to 50 meters (164 feet) transmit and receive
802.11b/g: up to 100 meters (328 feet) transmit and receive
Unobstructed range maximum: 457 meters (1,499 feet)

OPERATING CHANNELS:

Channel availability depends on local country regulations. Wireless LAN system administrator must choose correct country of operation. Channels are then automatically configured to comply with specified country's regulations.

MODULATION TECHNIQUE

DSSS (Direct Sequence Spread Spectrum)
OFDM (Orthogonal Frequency Division Multiplexing)

MEDIA ACCESS PROTOCOL

CSMA/CA

POWER CONSUMPTION

6W maximum (from PoE port)

TRANSMIT POWER SETTINGS

Based on the regulatory domain set by the system administrator, not to exceed the following:

802.11a
6 Mbps: $\geq +18$ dBm
9 Mbps: $\geq +18$ dBm
12 Mbps: $\geq +18$ dBm
18 Mbps: $\geq +18$ dBm
24 Mbps: $\geq +18$ dBm
36 Mbps: $\geq +18$ dBm
48 Mbps: $\geq +16$ dBm
54 Mbps: $\geq +16$ dBm

802.11b/g

1–11 Mbps: $\geq +18$ dBm
12 Mbps: $\geq +18$ dBm
18 Mbps: $\geq +18$ dBm
24 Mbps: $\geq +18$ dBm
36 Mbps: $\geq +18$ dBm
48 Mbps: $\geq +16$ dBm
54 Mbps: $\geq +16$ dBm

RECEIVE SENSITIVITY

802.11a

6 Mbps: ≤ -87 dBm
9 Mbps: ≤ -86 dBm
12 Mbps: ≤ -84 dBm
18 Mbps: ≤ -82 dBm
24 Mbps: ≤ -79 dBm
36 Mbps: ≤ -75 dBm
48 Mbps: ≤ -72 dBm
54 Mbps: ≤ -71 dBm

802.11b/g

1 Mbps: ≤ -95 dBm
2 Mbps: ≤ -92 dBm
5.5 Mbps: ≤ -91 dBm
6 Mbps: ≤ -89 dBm
9 Mbps: ≤ -88 dBm
11 Mbps: ≤ -88 dBm
12 Mbps: ≤ -86 dBm
18 Mbps: ≤ -84 dBm
24 Mbps: ≤ -81 dBm
36 Mbps: ≤ -77 dBm
48 Mbps: ≤ -73 dBm
54 Mbps: ≤ -72 dBm

STANDARDS COMPLIANCE

IEEE 802.11a, 802.11b, 802.11g, 802.11i, 802.3, 802.3af, 802.1X; WEP, AES, WPA, WPA2, WMM, and Wi-Fi CERTIFIED

ANTENNA

2 removable 2dB gain antennas with R-SMA connector

SECURITY

WPA2 AES and TKIP encryption; 64/128/152-bit WEP encryption; 802.1X with EAP-TLS, EAP-TTLS, and PEAP; WPA-PSK authentication; MAC address authentication and filtering; 802.1Q VLAN; multiple SSID; RADIUS client authentication, authorization, and accounting

NETWORKING PROTOCOLS

TCP/IP, Bridging Protocol, DHCP, HTTP, FTP

PERFORMANCE

Dynamic rate shifting
Packet bursting
Clear channel connect
802.11a/b/g SuperG mode

MANAGEMENT

SNMP v1 and v2c support
Remote management with Web browser over HTTP; command line interface over Telnet

LEDS

Power, 10/100 Mbps, 802.11a, 11b, or 11g activity

POWER SUPPLY

PoE adapter: 48VDC, 400 ma

SPECIFICATIONS (CONTINUED)

DIMENSIONS AND WEIGHT

Height: 16.5 cm (6.5 in)
Width: 8.3 cm (3.25 in)
Depth: 3.2 cm (1.25 in)
Weight: 198.0 g (7.0 oz)

REGULATORY/AGENCY APPROVALS

Safety
UL/CSA 60950
EN/IEC 60950
NOM-019- SCFI
AS/NZS 60950

EMC/EMI
FCC 15 Subpart C
IC RSS-210
EN 300 328
EN 301 893
EN 301 489-1, -17
EN 60601

ENVIRONMENTAL RANGES

Operating temperature: -10 to 40°C
(14 to 104°F)
Storage temperature: -40 to 70°C
(-40 to 158°F)
Humidity: 10 to 95% non-condensing

PACKAGE CONTENTS

3Com Wireless 7760 11a/b/g PoE Access Point
Two external dual-band 2.4/5.15GHz antennas with R-SMA connectors
Mounting hardware
PoE injector
Quick Installation Guide
Support and Safety sheet
Warranty sheet
CD-Rom with drivers and documentation

WARRANTY AND OTHER SERVICES

Three-year Hardware Warranty.
Limited Software Warranty for 90 days
Advance Hardware Replacement with Next Business Day shipment in most regions.
90 days of telephone technical support
Refer to www.3com.com/warranty for details.



ORDERING INFORMATION

PRODUCT DESCRIPTION	MODEL NO	3COM SKU
3Com Wireless 7760 11a/b/g PoE Access Point	WL-561	3CRWE776075
Managed Wireless LAN Access Point Antenna Options		
3Com 6/8dBi Dual-Band Omni Antenna		3CWE591
3Com 3/4dBi Dual-Band Ceiling Mount Antenna		3CWE592
3Com 4/6dBi Dual-Band Hallway Antenna		3CWE597
Antenna Cables		
3Com Ultra Low Loss 6-Foot Antenna Cable		3CWE580
3Com Ultra Low Loss 20-Foot Antenna Cable		3CWE581
3Com Ultra Low Loss 50-Foot Antenna Cable		3CWE582
3Com RSMA to SMA 6" Antenna Cable		3CWE586
3Com Wireless LAN-Related Products		
3Com Unified Gigabit Wireless PoE Switch 24		3CRUS2475
3Com Baseline Switch 2924-PWR Plus		3CBLSG24PWR
3Com Baseline Switch 2426-PWR Plus		3C16491
3Com OfficeConnect® Managed Gigabit PoE Switch		3CDSG10PWR
3Com OfficeConnect Managed Switch 9		3CR16708-91
3Com Global Services		
3Com Wireless LAN Site Survey, Network Health Check, Installation Services, and Express SM Maintenance	www.3com.com/services_quote	
3Com University Courses	www.3com.com/3comu	

Visit www.3com.com for more information about 3Com secure converged network solutions.

3Com Corporation, Corporate Headquarters, 350 Campus Drive, Marlborough, MA 01752-3064
3Com is publicly traded on NASDAQ under the symbol COMS.

Copyright © 2007 3Com Corporation. All rights reserved. 3Com, the 3Com logo, and OfficeConnect are registered trademarks, and Express is a service mark, of 3Com Corporation. All other company and product names may be trademarks of their respective companies. Wireless speed and performance depend on number of users, physical conditions, and other electronic devices in the area. While every effort is made to ensure the information given is accurate, 3Com does not accept liability for any errors or mistakes which may arise. All specifications are subject to change without notice.

400989-007 11/07

