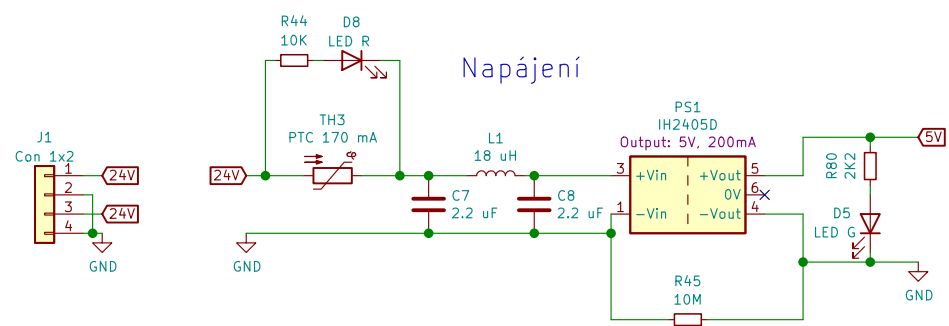
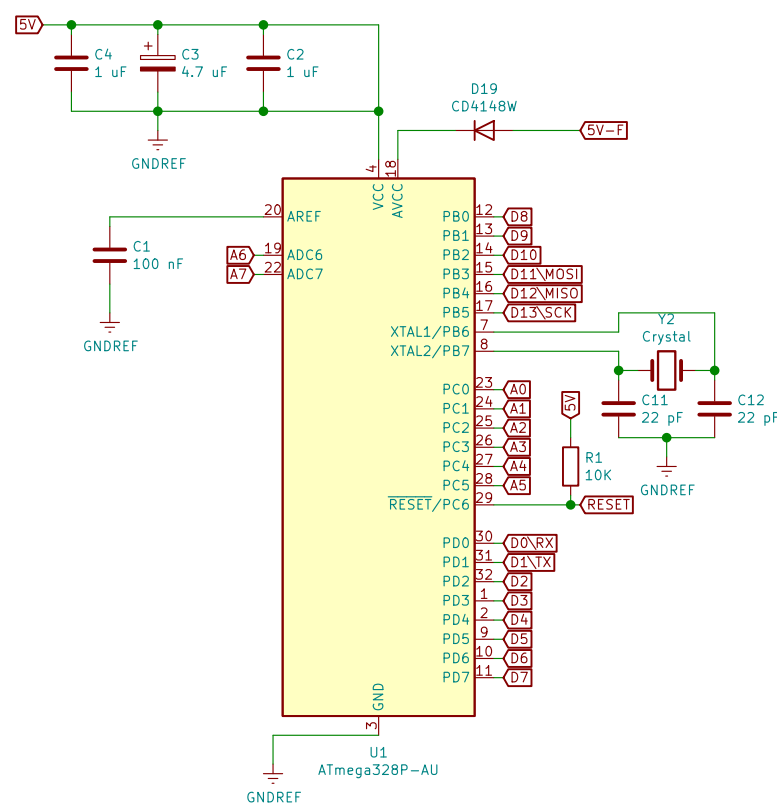


Napájení



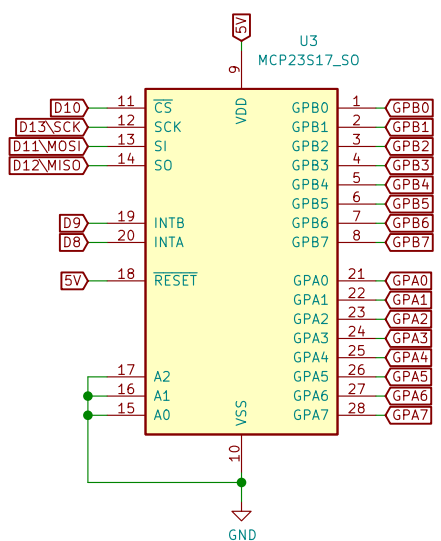
Mikrokontroler

Zatížení DC/DC menice: 14mA + zatížení GPIO



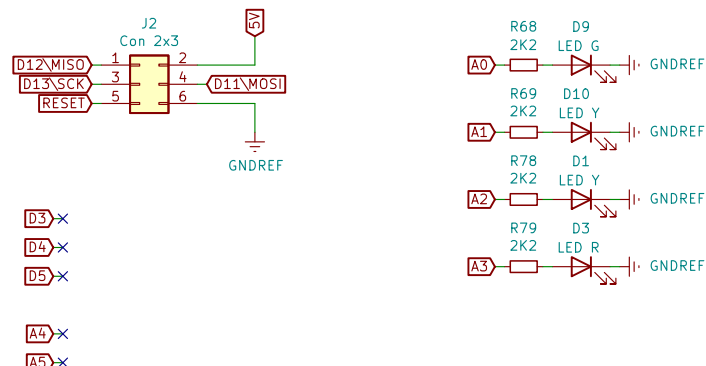
Rozšíření vstupu/výstupu

Zatížení DC/DC menice: 1mA + zatížení GPIO
Max. zatížení 1 GPIO: 25mA
Max. zatížení Vdd: 125mA



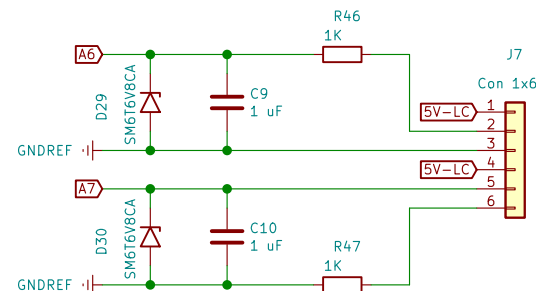
Stavové Led-ky

Zatížení DC/DC menice: 4x2mA = 8mA

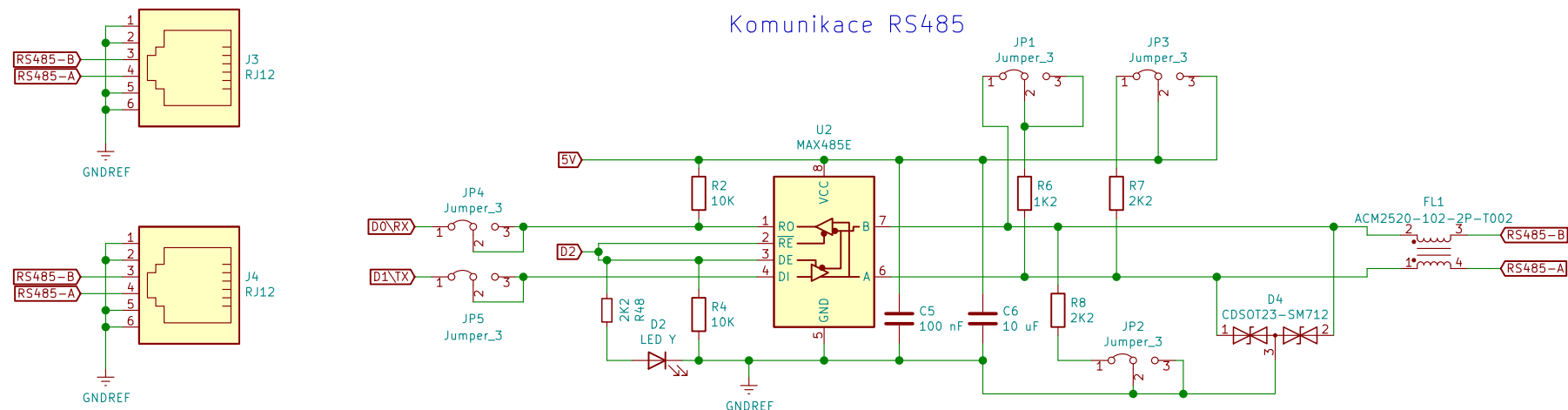


Vstupy pro potenciometry 10k Ohm

Zatížení DC/DC menice: 2x0.5mA = 1mA

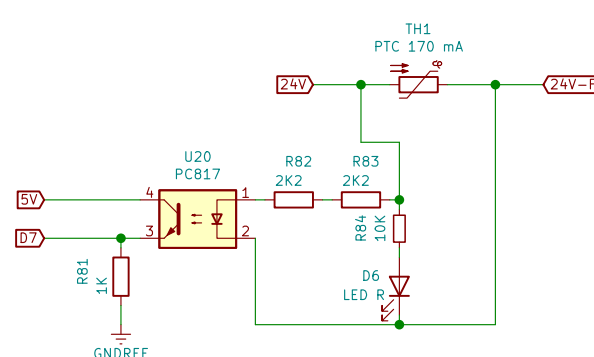


Komunikace RS485



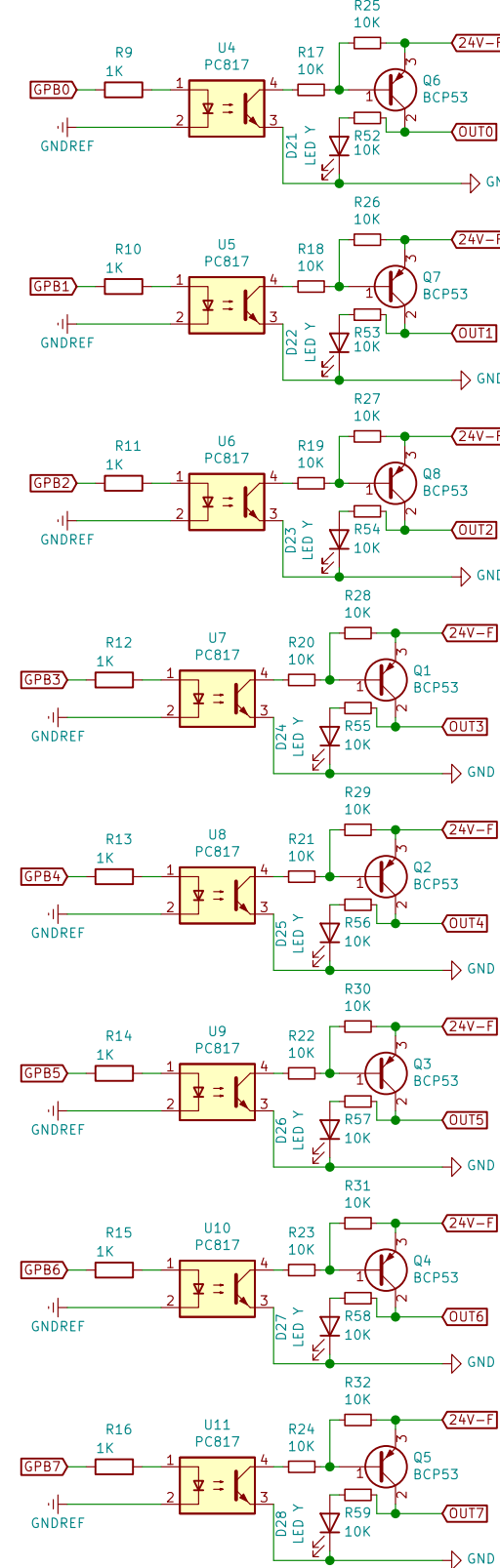
Diagnostika pretizeni vstupu

Zatížení DC/DC menice: 5mA



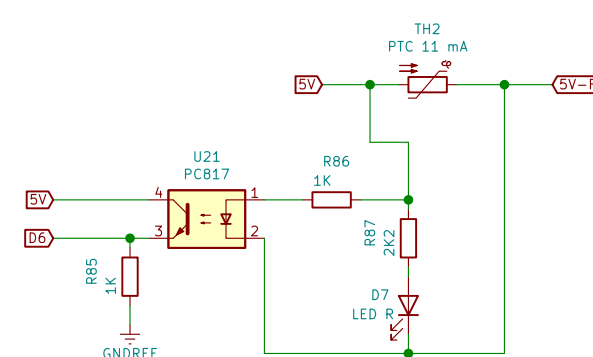
Tranzistory vstupu

Zatížení DC/DC menice: 8x5mA = 40mA

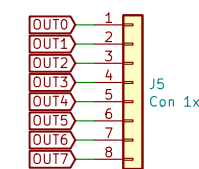


Diagnostika pretizeni napajeni vstupu pro potenciometry

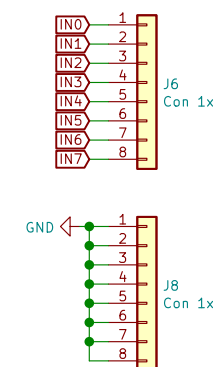
Zatížení DC/DC menice: 11mA+5mA+5mA+2mA = 23mA



Vystupy 24V, 20mA, PNP

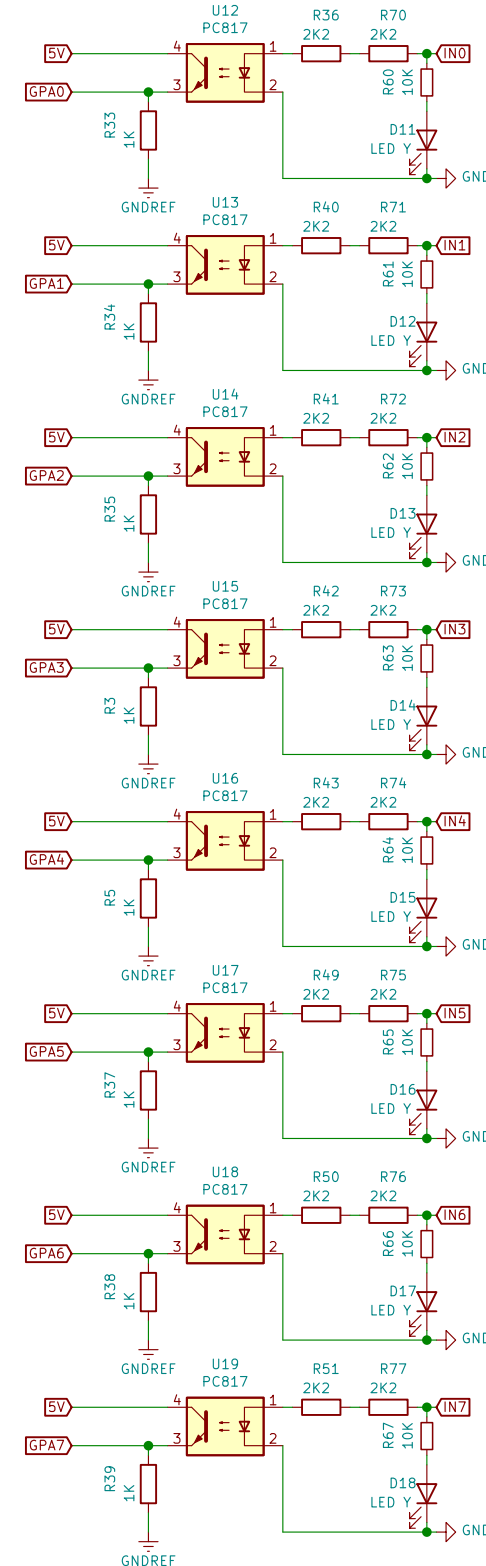


Vstupy 24V PNP



Tranzistory vstupu

Zatížení DC/DC menice: 8x5mA = 40mA



Open Hardware