

OmniTurn



Tooling - Accessories - Parts

40 Allen Blvd - Farmingdale NY 11735

Phone (631) 694-9400 Fax (631) 694-9415

sales@omni-turn.com

www.omni-turn.com

Table of contents

	Page
Quick change Post tooling	
Posts	5
Holders	6
Live tooling holders	7 & 9
Quick change Fixed tooling	
Standard 1/2" and 3/8" center height	8
Live tooling holders	9
Specials	9
Cutting tools	
MultiBar 5/8" shank holders and inserts	12 & 13
<i>Front turn, back turn, groove, thread, full radius, cut off</i>	
MultiBar large inserts and holders	11
<i>Front turn, back turn, groove, thread, full radius, cut off</i>	
MultiBar face grooving holder and inserts	14
Left Hand turning and threading tool, Turning, threading	14
Iscar turning, threading, cut off, grooving, back turning	15
Iscar cutoff blades and inserts	16
Wobble broach holder and inserts	15
Knurling holder and dies	18
Live tooling	
Foredom 1/4hp 20,000 rpm	18
Suhner 1/2hp 4000 to 9000rpm	19
Suhner 1.3hp 1000 to 14000 rpm	19
NSK pneumatic and electric tools	20
Spare parts	24 & 25
Tap heads	
Floating	10
Floating - heavy duty	11
Self releasing	10
Tooling accessories	
Revolving work stops	9
Bar pullers	9
Drill holders	10
5/8" OD bushings	7
Spare T nuts	7
Tooling kits	4
Machine Accessories	
Parts conveyor	7
Vertical cut off	9
Spindle liners	16
Additional I/O kit	17
Grease gun kit	28
High pressure coolant	22
Through the spindle air and/or coolant	22
Pneumatic collet closers	22
Pneumatic Bar feeds	25
OmniZip magazine feeder	25
Work holding	
3" 2 jaw chuck	17
4" 3 jaw blind chuck	17
4.5" 3 jaw with 1" through hole	17

OmniTurn

Your single source for gang tool machines, tooling, automation, and assistance

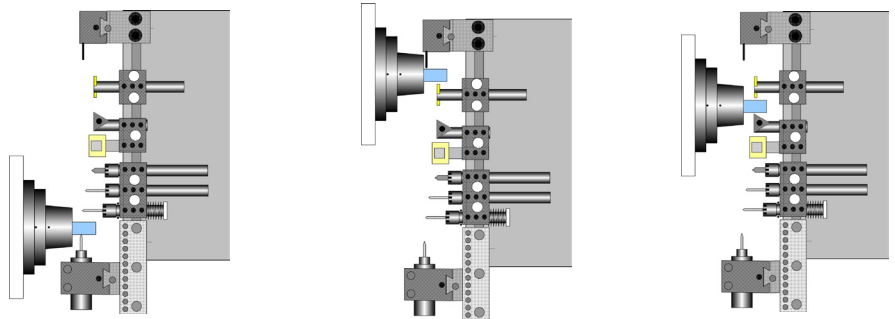
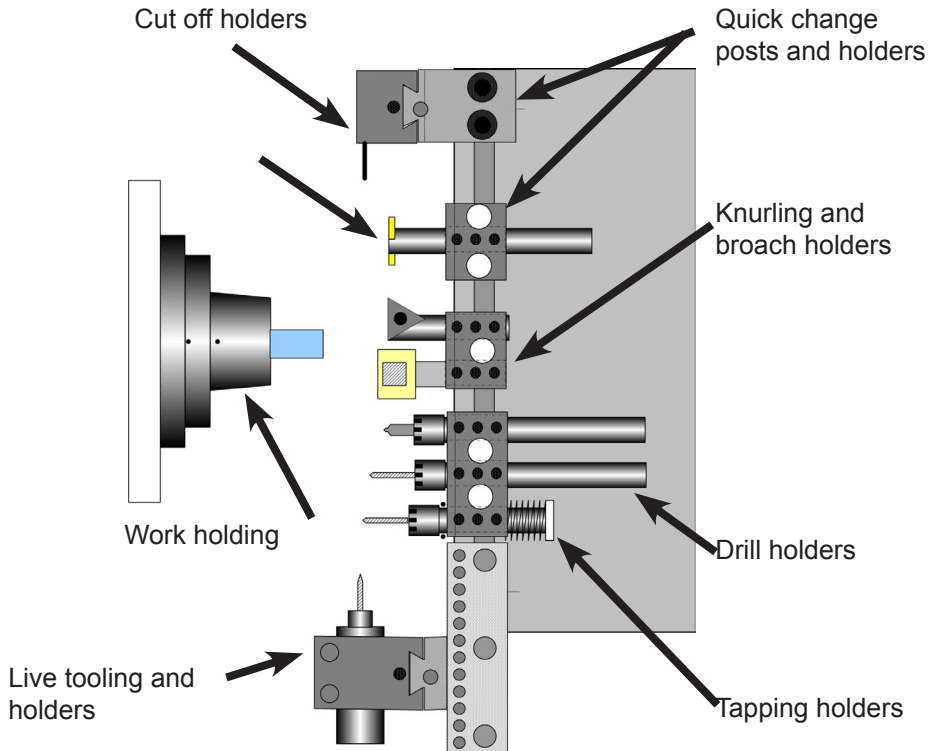
100% Tooling Return Policy

Since gang tooling is new to most OmniTurn users we have a tooling policy different from all other machine builders: A tooling guarantee. We will take back tooling in good condition, at any time, no matter how long ago you acquired the tool, and give you 100% credit towards other OmniTurn tooling. Our return policy makes experimenting with setups and getting used to the special needs of gang tooling easier. If you buy a tool that does not fit your tooling layout, planing can make or break a job's profitability. The issues with gang tooling are different from turret setups.

Tooling layout assistance

- ◆ Part and tooling interference
- ◆ Tooling overhang and rigidity
- ◆ Tooling density
- ◆ Tooling sequence and travels

OmniTurn can help you get the most out of your machine and job. We can help you get a layout designed in advance so you are not having to spend time rearranging and reordering tooling until it all fits. If you send us a print we can return a tooling layout like the one to the right.



Tooling Layout Assistance is available - in most cases for FREE!

Work Holding Secondary Operations - Not Always Easy

Secondary operations are usually simple, it is the work holding that can get in the way. While there is not much in this catalog in the way of work holding options, OmniTurn does offer a great deal of expertise to its users in the way of advise and direction. When you have issues with concentricity, dead length tolerances, internal gripping, off center turning, or over sized parts, give us a call. We have probably seen and solved the issue before.



STARTER TOOLING KITS

Attachment

Basic Kit	3/8"	1/2"
Post W	195.	195.
TF625	85.	85.
Cutoff-11/16	95.	95.
MultiBar Starter Kit	265.	265.
Iscar Cutoff w/inserts	193.	193.
Set of Bushings	140.	140.
(2) Omni-101L/115L	160.	180.
Omni-200/205	95.	105.
Omni-300/305	105.	115.
Omni-800/805PF	295.	325.
ATTBK-3/8	1,658.	
ATTBK-1/2		1,718.

Advanced Kit: includes the Basic Kit

(2) OTC-16	230.	230.
OTC-16 Wrench	21.	21.
OTC-16 Collet Set	255.	255.
Tapping Head	215.	215.
Offset Post Assemb.	270.	270.
ATTAk-3/8	2,649	
ATTAk-1/2		2,709

These starter tooling kits are great for shops that do not have experience with gang tooled lathes. The kits represent a good cross section of the different types of tooling and tool holders. They are good for a shop that does not have a specific job to be run on the OmniTurn and would like to try some of everything.

Tool Plate Center Heights:

The standard attachment and GT-75 are available with either 3/8" or 1/2" center heights. Be sure to select the correct kit number.

Our entire range of tool holders are engineered for optimum performance.

Substitutions are Available:

For changes to the basic kit, please note the difference on your PO, and we will be

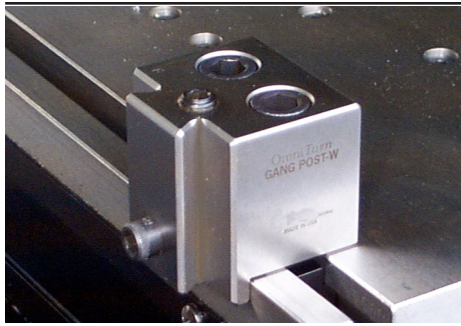
GT-75

Basic Kit	3/8"	1/2"
Post W	195.	195.
TF625	85.	85.
Cutoff-F	105.	105.
MultiBar Starter Kit	265.	265.
Iscar Cutoff w/inserts	193.	193.
Set of Bushings	140.	140.
(2) Omni-101L/115L	160.	180.
Omni-200/205	95.	95.
Omni-300/305	105.	115.
Omni-800/805PB	325.	345.
GTBK-3/8	1,668.	
GTBK-1/2		1,728.

Advanced Kit: includes the Basic Kit

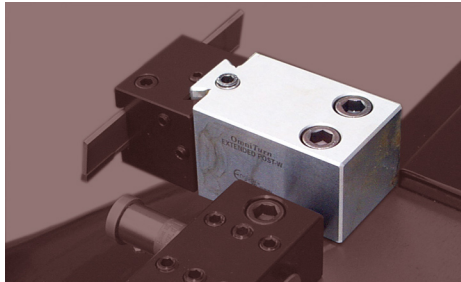
(2) OTC-16	230.	230.
OTC-16 Wrench	21.	21.
OTC-16 Collet Set	255.	255.
Tapping Head	215.	215.
Offset Post Assemb.	270.	270.
GTAK-3/8	2,659	
GTAK-1/2		2,719





TOOL POST - W

Tool Post - W \$195.00



TOOL POST EXTENDED - W

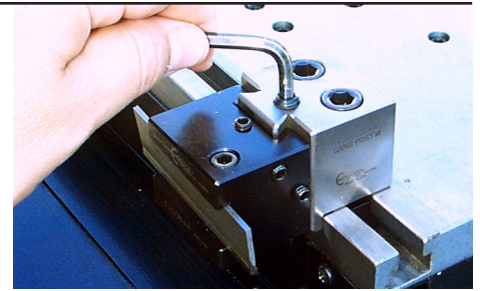
Tool Post Extended - W \$225.00

HEAVY DUTY W TOOL POSTS

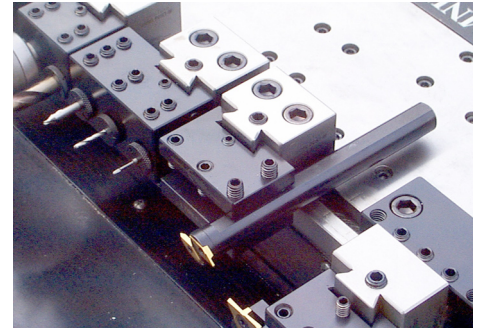
- The W type tool post has a wedge action clamp that pulls the tool holder against the face of the post. This wedge type clamp is much stronger than other tool post's that use a setscrew. The W type holder is strongly recommended when there will be heavier cutting. Turning and cutoff tools can take deeper cuts with better finishes and longer life. This post also works much better for interrupted cuts. The "hammering" of the tool does not loosen the wedge clamp.

- The wedge clamp holders also have excellent repetition in height. The clamping of the tool does not move the tool up or down.

- The locking action is done from above. The W type posts can be placed on the tooling plate directly against one another. No space is used on the tooling plate when having to get at the locking



THE LOCKING WEDGE IS DRIVEN BY A SCREW FROM ABOVE

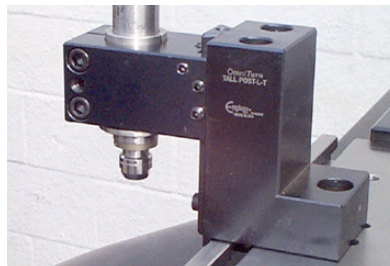
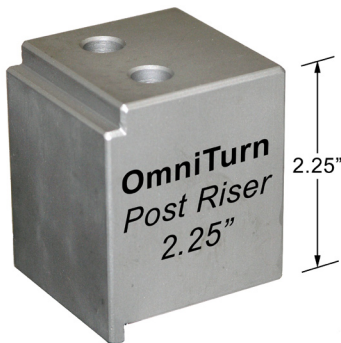


HOLDERS PLACED NEXT TO ONE ANOTHER WITHOUT INTERFERENCE

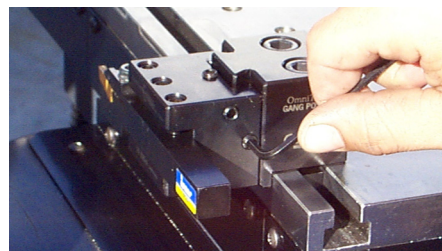
Tool Post Riser

Raise your Toolpost-W to work with live tooling for milling and slotting. The riser is hardened and ground so it gives the best support, square and true.

Tool Post Riser \$110.00



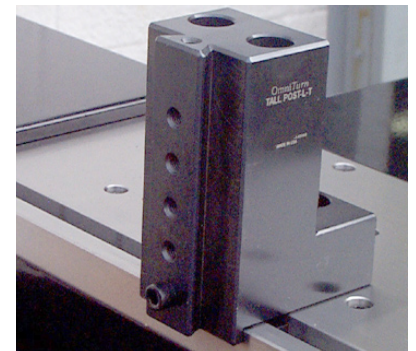
When tightening tool holders to the tall tool post the taper set screws on the holder are used. If more rigidity is needed use a tool post riser



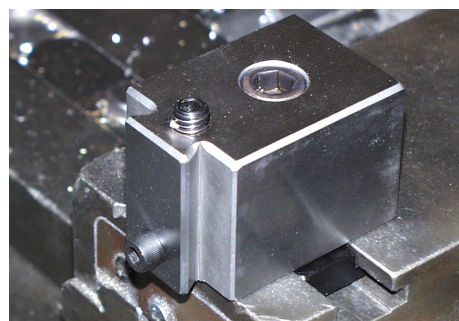
TALL TOOL POST

- The face of the post has 5 tapped holes for the height adjustment screw. This makes the post useful for more tooling applications.

- The post is held to the tooling plate with a long T nut, with two bolts. There is a third hole, for an additional bolt if the application requires extra stiffness.



Tall Tool Post \$265.00



POST W FOR HLV-H AND TFB

Use your OmniTurn tooling on Hardinge tool room lathes. This post comes with a T slot plate to match the Hardinge HLV and TFB. The post does not have a lip on the front so it can be turned to any angle.

W Tool Post for HLV/TFB \$215.00

OFFSET POST

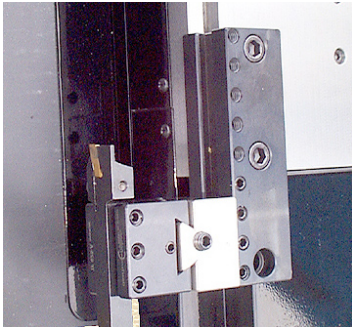
ASSEMBLY

This post assembly is great for getting the most out of your slide's tooling plate and travel. Use it to hold any tool out of the working area. Only the cutting edge is extended into the working range.

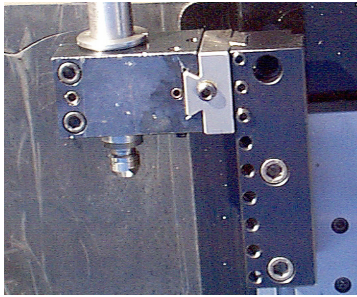
This holder is great for:

Cutting off - Turning - Live tools

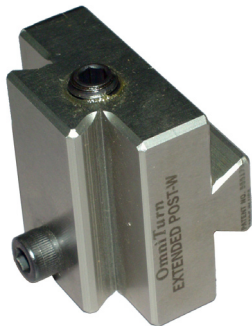
- The rail can be mounted on the front or back of the slide.
- The rail's dovetail is across the entire face. The offset post W adaptor can be set anywhere on the face of the rail.
- The offset post W adaptor has all of the features of the regular W type post, with the W type clamping system. The adaptor is available in Standard and Long length.



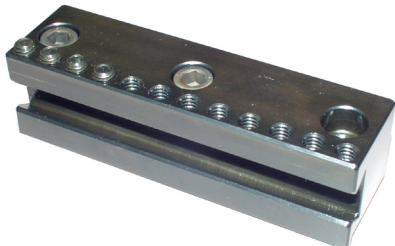
OFFSET ASSEMBLY BACK MOUNTED



OFFSET ASSEMBLY REAR MOUNTED



Offset Post W adaptor \$195.00



Offset Post Assembly Rail \$75.00

Tool Holders for OmniTurn Posts



Now holds 3/4" tools
Omni TF625 \$85.00



Now holds 3/4" tools
Omni L type Right \$115.00



Now holds 3/4" tools
Omni L type Left \$115.00



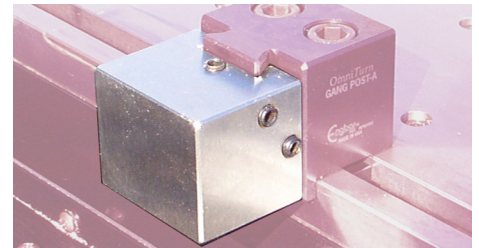
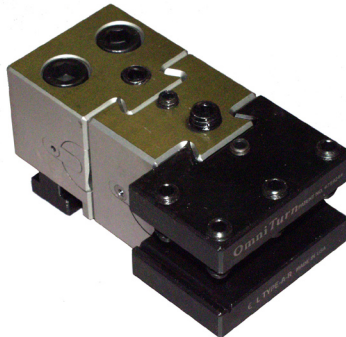
Omni 2 Gang \$105.00



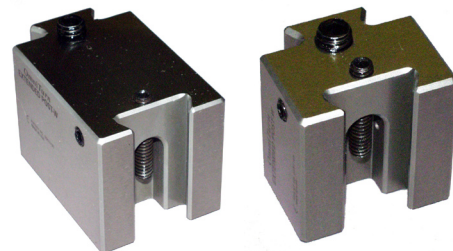
Omni 3 Gang \$115.00



Omni Universal \$115.00

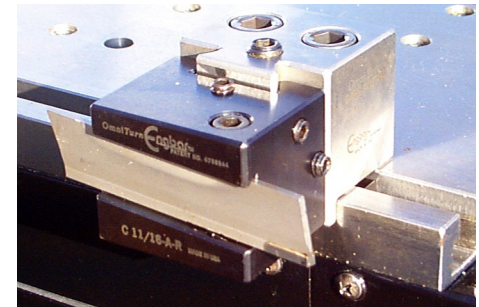


Omni Soft Blank \$50.00

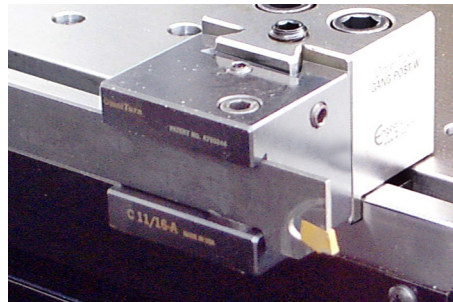


Tool Post Extensions

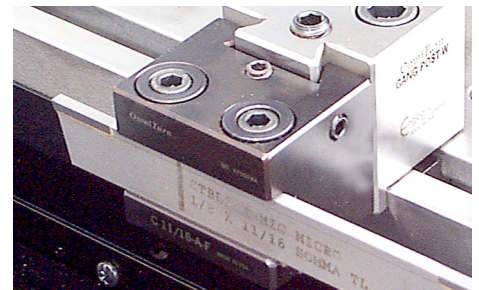
W ext. Long \$235 W ext. Short \$190.00



Omni 11/16 angle Holder \$105.00



Omni 11/16 "Back" Cutoff Holder \$95.00



Omni Cutoff - Front Mount \$105.00

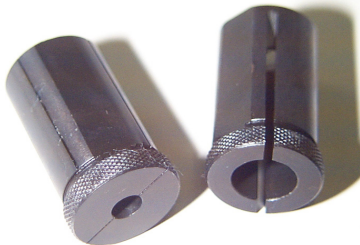
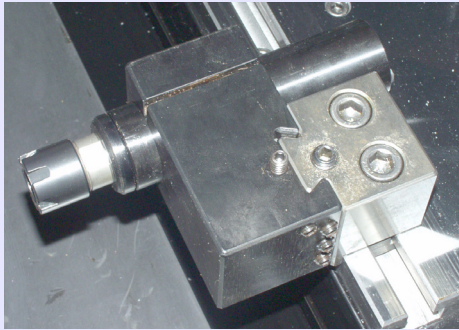
LIVE IN-LINE HOLDER



Here is a new holder for live tooling. It has a 30mm bore. The bushings above can be used to step it down.

This holder is great for milling flats or larger slots. With the Tool Post-W you you can adjust the height of the cutter easily.

Live In-Line - 30 holder \$225.00



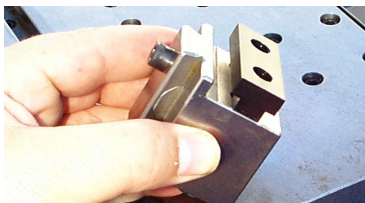
OMNI 5/8" BUSHINGS

Bushings are available in stock fractional sizes. All bushings are hardened and ground.

Bushing 1/16 x 5/8"	\$21.50
Bushing 1/8 x 5/8"	\$21.50
Bushing 3/16 x 5/8"	\$21.50
Bushing 1/4 x 5/8"	\$21.50
Bushing 5/16 x 5/8"	\$21.50
Bushing 3/8 x 5/8"	\$21.50
Bushing 7/16 x 5/8"	\$21.50
Bushing 1/2 x 5/8"	\$21.50
Set of Eight (1 each)	\$140.00

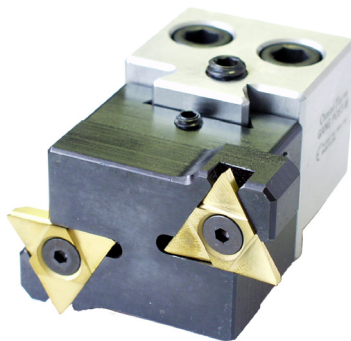
OMNI TURN "T" NUTS

Long T nuts are available for OmniTurn tooling. These nuts help with quick change overs.

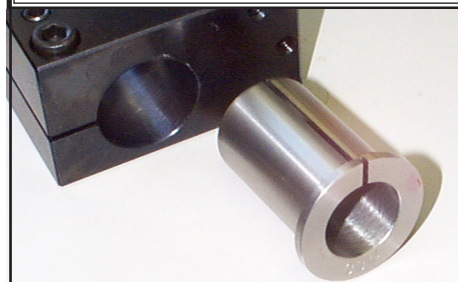


TNUT-P use with tool posts	\$10.00
TNUT-A use with 300P, 305P, 700, 705, 800, 805	\$11.00
TNUT-B use with 100, 300, 305	\$10.00
TNUT-1 use with all holders using 1 nut	\$ 6.00

LARGE MULTIBAR DOUBLE HOLDER



See Page 11 for details and inserts



Live Tool Vertical Holders



Live Vertical LV-30	\$215.00
Live Vertical LV-40	\$225.00
Live Vertical - Soft (.75 bore)	\$160.00

Live Tool Horizontal Holders



Live Horizontal LH-30	\$215.00
Live Horizontal LH-40	\$230.00
Live Horizontal - Soft (.75 bore)	\$160.00

BUSHINGS

1"/30mm for Foredom	\$95.00
1.032"/30mm for Foredom	\$95.00
.9"/30mm for Astro system	\$95.00
.91"/30mm for Astro series	\$95.00
1"/40mm for Foredom	\$140.00
1.032"/40mm for Foredom	\$140.00
.9"/40mm for Astro system	\$140.00
.91"/40mm for Astro series	\$140.00
.36"/40mm - Omni36 spindle	\$140.00

PART CONVEYORS FOR GT-75 AND GT-JR.S

Why fight to separate you parts from chips and coolant? Install a part conveyor to do most of the work for you. The new conveyor option will take the parts outside the working area. Installed as shown below the parts can be dropped into a bucket or table on the right side of the machine. Discharging to the left can also be done by the end user.

The conveyors are normally installed in front of the working area. Under the cutoff tool or in front of a spring loaded collet a baffle can be setup to direct the finished part onto the conveyor. This part of the setup is left to the end user.

Factory installed - new machines \$2,800

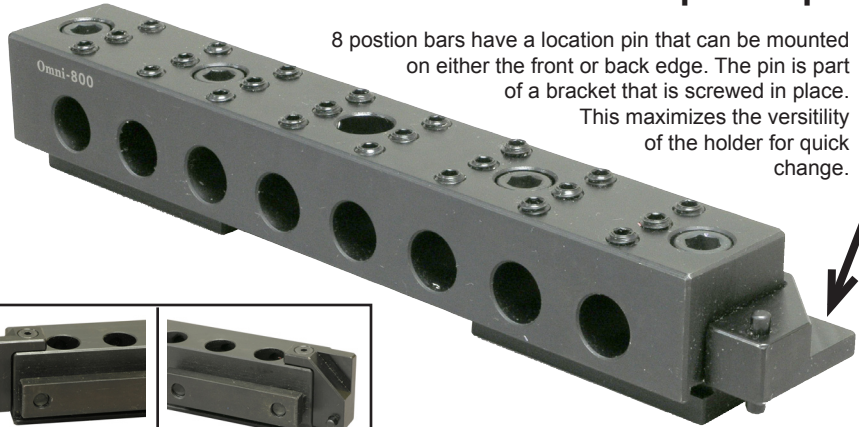
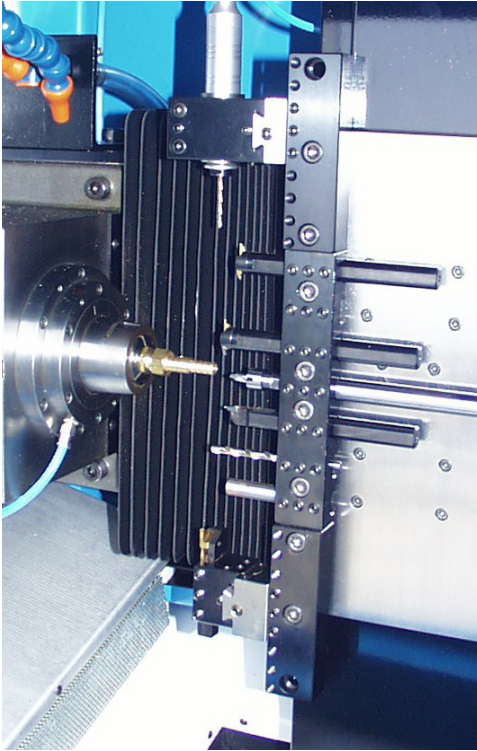
Standard installations do not include an M function control. Turn the conveyor on, let it run all day.

Drop shipped to end user, installation to be done by end user. \$1,395

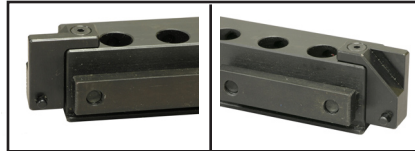


QUICK CHANGE OVER HOLDERS

QUICK CHANGE BARS FOR GT-75 & ATTACHMENTS: Universal pin stops

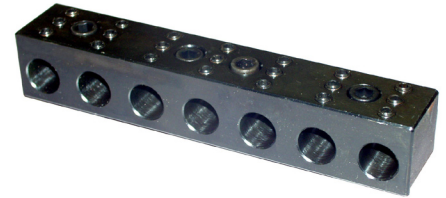


8 position bars have a location pin that can be mounted on either the front or back edge. The pin is part of a bracket that is screwed in place. This maximizes the versatility of the holder for quick change.



8 STATION - PIN FRONT OR BACK

Omni-800PFB - 5/8" bore, 3/8" center height \$325.00
 Omni-805PFB - 5/8" bore, 1/2" center height \$345.00
Uses T nut style: TNUT-A



7 STATION - NO PIN

Omni-700 - 5/8" bore, 3/8" center height \$275.00
 Omni-705 - 5/8" bore, 1/2" center height \$295.00
Uses T nut style: (2) TNUT-A
 Omni-7075 - 3/4" bore, 1/2" center height \$340.00
Uses T nut style: (4) TNUT-1



3 STATION - NO PIN

Omni-300 - 5/8" bore, 3/8" center height \$105.00
 Omni-300 soft 5/8"-.07" bore, 3/8" center height \$55.00
 Omni-305 - 5/8" bore, 1/2" center height \$115.00
 Omni-305 soft 5/8"-.07" bore, 1/2" center height \$60.00
Uses T nut style: TNUT-B
 Omni-3075 - 3/4" bore, 1/2" center height \$125.00
Uses T nut style: (2) TNUT-1



3 STATION - PIN BACK

Omni-300PB - 5/8" bore, 3/8" center height \$140.00
 Omni-305PB - 5/8" bore, 1/2" center height \$150.00
Uses T nut style: TNUT-A



3 STATION - PIN FRONT

Omni-300PF - 5/8" bore, 3/8" center height \$135.00
 Omni-305PF - 5/8" bore, 1/2" center height \$150.00
Uses T nut style: TNUT-A



2 STATION

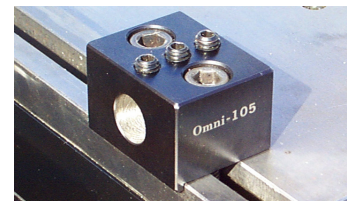
Omni-200 - 5/8" bore, 3/8" center height \$95.00
 Omni-200 soft 5/8"-.07" bore, 3/8" center height \$45.00
 Omni-205 - 5/8" bore, 1/2" center height \$105.00
 Omni-205 soft 5/8"-.07" bore, 1/2" center height \$50.00
 Omni-2075 - 3/4" bore, 1/2" center height \$115.00
Uses T nut style: TNUT-1



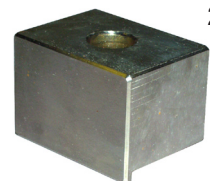
1 STATION - WITH LIP

Omni-101L - 5/8" bore, 3/8" center height \$80.00
 Omni-115L - 5/8" bore, 1/2" center height \$90.00
 Omni-1175L - 3/4" bore with 1/2" center \$100.00
Uses T nut style: TNUT-1

1 STATION - HEAVY DUTY



Omni-100 - 5/8" bore, 3/8" center height \$80.00
 Omni-100 soft 5/8"-.07" bore, 3/8" center height \$40.00
 Omni-105 - 5/8" bore, 1/2" center height \$90.00
 Omni-105 soft 5/8"-.07" bore, 1/2" center height \$45.00
Uses T nut style: TNUT-b
 Omni-175 - 3/4" bore, 1/2" center height \$105.00
 Omni-5-100 - 1.000" bore, 1/2" center height \$155.00
Uses T nut style: (2) TNUT-1



2 STATION - BLANK

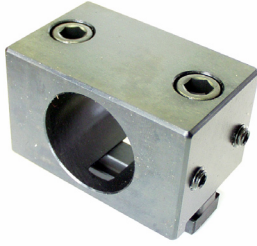
Omni-200 Blank \$45.00



1 STATION - NO LIP

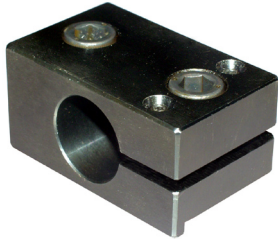
Omni-101 - 5/8" bore, 3/8" center height \$80.00
 Omni-115 - 5/8" bore, 1/2" center height \$80.00
 Omni-1175 - 3/4" bore, 1/2" center height \$85.00
Uses T nut style: TNUT-1

LARGE OMNI-LIVE TOOL HOLDERS



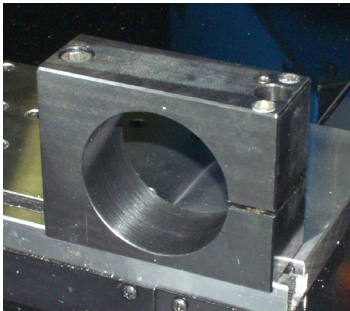
- 5-30 - 30mm bore \$160.00
 - 5-36 - 36mm bore \$160.00
 - 5-40 - 40mm bore \$160.00
- The 5-30 and 5-40 hold the spindles above center
Uses T nut style: (2) TNUT-1

NSK OMNI-LIVE TOOL HOLDERS



- Omni 590 - 1/2" center height \$165.00
for NSK Astro System
 - Omni 591 - 1/2" center height \$165.00
for NSK Astro Series
- Uses T nut style: (2) TNUT-1

EXTRA LARGE OMNI-LIVE TOOL HOLDERS

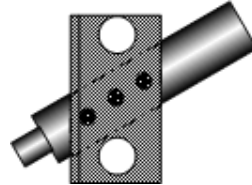


Call for any large diameter needs POR

ANGLE OMNI-LIVE TOOL HOLDERS

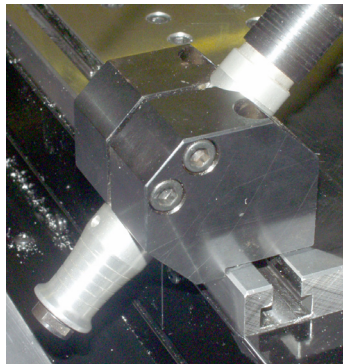


You can drill angled holes with the OmniTurn. Holders are made to order. The OmniTurn slide is responsive enough to enable peck drilling at any angle. We have applications in the in use where .062" drill are being drilled at 30 degrees .75" deep.



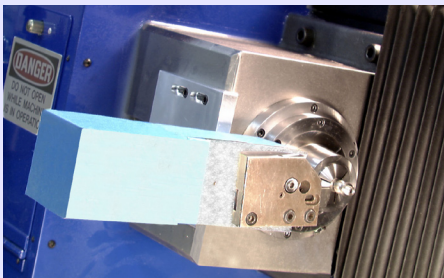
- 590-A (specify angle) \$250.00
 - 591-A (specify angle) \$250.00
 - 5100-A (specify angle) \$270.00
 - 5-30 - 30mm bore-A (specify angle) \$290.00
 - 5-40 - 40mm bore-A (specify angle) \$290.00
- The 5-30 and 5-40 hold the spindles above center
Uses T nut style: (2) TNUT-1

COMPOUND ANGLE OMNI-LIVE TOOLS



Prices quoted on request POR

VERTICAL CUT OFF

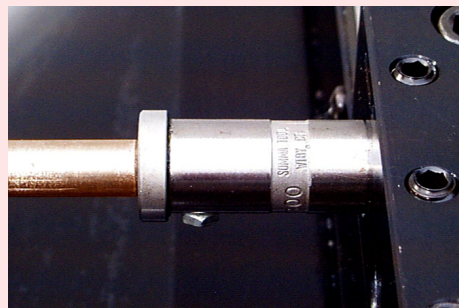


Vertical cut off: This option adds greatly to our machine. Cycle times are reduced by starting the cutoff before the other operations are done. Tooling plate space is also freed up for other operations. The vertical slide can also be used for cross drilling and other special applications.

- GT-75 or GT-Jr \$4,995.00
- Attachment \$5,395.00
- For existing machine in field add \$350.00

REVOLVING STOP

This stop has a replaceable head, a 5/8" shank, and can be used with any of the fixed center height tool holders. The standard stop is supplied with a hardened 4140 head, 3/4" in diameter.

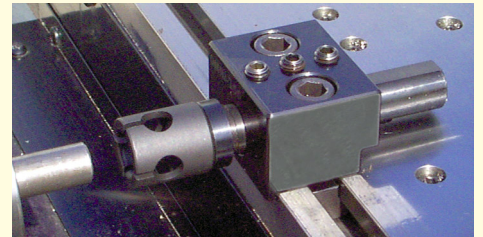


- Revolving Stop #RSS-00 \$72.00
- Spare Head - 3/4" diameter \$23.00

OMNITURN BAR PULLERS

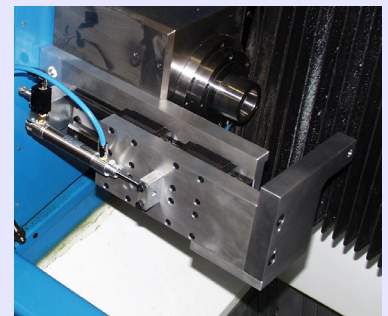


- Light weight & self activating. No moving parts.
- 5/8" shank fits directly into OmniTurn tool holders
- Gripper threads onto shank, change in seconds
- Only 1/4" bar engagement is needed.
- Small head diameter minimizes interference
- Using a bar puller reduces bar whip as compared to a push type bar feed



Bar puller shank- 5/8"		\$59.00
.187"	PBG0187	\$49.50
.250"	PBG0250	\$49.50
.312"	PBG0312	\$49.50
.375"	PBG0375	\$49.50
.437"	PBG0437	\$49.50
.500"	PBG0500	\$49.50
.562"	PBG0562	\$49.50
.625"	PBG0625	\$49.50
.687"	PBG0687	\$49.50
.750"	PBG0750	\$49.50
Bar puller kit includes 10 pullers and shank		\$518.00

TAILSTOCK FOR GT'S



This headstock mounted tailstock is great for special applications where the part must be supported while being machined.

- Tailstock activation can be pneumatic or manual lead screw driven
- The tailstock clears the tooling plate.
- Tailstock stroke: 2" max
- The tailstock can be mounted at any point in Z so you can make the most of the 2" of travel.

Contact your factory representative for details and application assistance.
Price: \$2,500

OMNITURN COLLET SYSTEM

OTC-11 - .276" CAPACITY

OTC-16 - .406" CAPACITY

COLLET HOLDERS

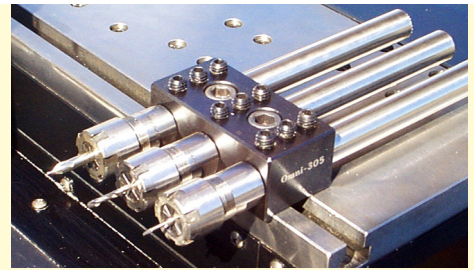
OTC-11 Holder with Nut	\$95.00	OTC-16 Holder with Nut	\$115.00
Wrench for OTC-11 nut	\$19.50	Wrench for OTC-16 nut	\$21.50
Extra nut for OTC-11 holder	\$25.00	Extra nut for OTC-16 holder	\$32.00

COLLET SETS

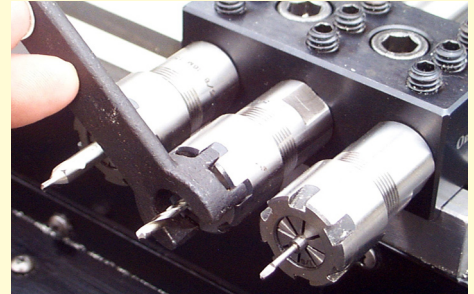
OTC-11 Set (13 piece)	\$320.00	OTC-16 Set (10 piece)	\$255.00
.020" - .276"		.020" - .394"	

INDIVIDUAL COLLETS

Size	Fractional	OTC-11	Price	Size	Fractional	OTC-16	Price
.039 - .020		OTC11-001	\$30.00	.039 - .020		OTC16-001	\$30.00
.059 - .039		OTC11-002	\$25.00	.079 - .039		OTC16-002	\$25.00
.079 - .059	1/16	OTC11-003	\$25.00	.118 - .079	1/16, 3/32	OTC16-003	\$25.00
.098 - .079	3/32	OTC11-004	\$25.00	.157 - .118	1/8, 5/32	OTC16-004	\$25.00
.118 - .098		OTC11-005	\$25.00	.197 - .157	3/16	OTC16-005	\$25.00
.138 - .118	1/8	OTC11-006	\$25.00	.236 - .197	7/32	OTC16-006	\$25.00
.157 - .138	5/32	OTC11-007	\$25.00	.276 - .236	1/4	OTC16-007	\$25.00
.177 - .157		OTC11-008	\$25.00	.315 - .276	9/32, 5/16	OTC16-008	\$25.00
.197 - .177	3/16	OTC11-009	\$25.00	.354 - .315	11/32	OTC16-009	\$25.00
.217 - .197		OTC11-010	\$25.00	.394 - .354	3/8	OTC16-010	\$25.00
.236 - .217	7/32	OTC11-011	\$25.00				
.256 - .236	1/4	OTC11-012	\$25.00				
.276 - .256		OTC11-013	\$25.00				



SLIM DESIGN ALLOWS CLOSER SPACING



EASIER TOOL CHANGES IN POSITION



OMNITURN OTC-16 FLOATING TAP HOLDER

(OMNITAP) **\$215**

The OmniTurn OTC-16 tap holder has many advantages. The tap holder will fit in all of the tooling bars with a 5/8" bore. The holder is kept from rotating by a pin from the top. It can float back and forth smoothly. A spring keeps the holder back against the tooling bar. If you program the feed of the tap a little lower than the lead, the assembly will pull out a little from the bar. Then when the spindle reverses, the tap just "floats". For small sensitive taps, this is better than a holder with a clutch that can snap the tap on the reversal. The holder is case hardened. It will last a long time.

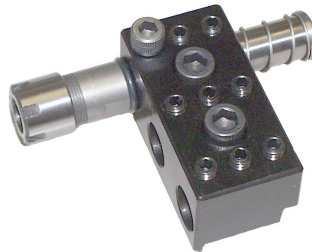
The holder uses standard OTC-16 collets. Special tapping collets with a square broach in the back are available on request.

The holder takes no additional space on the tooling bar. It is much smaller than self releasing holders.

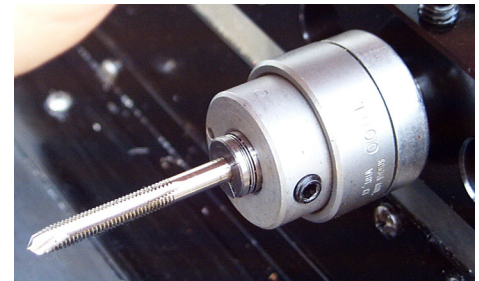
NOTE: If you are tapping to the bottom of a blind hole, or have to tap to a specific depth, then we recommend a self releasing tap holder. It is much easier to hold a depth with the release of a the clutch



The tap holder will fit in all of the tooling bars with a 5/8" bore.



SELF RELEASING TAP HOLDER



Tap Holder #TH00 **\$289.00**

Bushings for Tap Holders

Tap size	Part #	Price
#0 thru #6	1001	\$15.95
#7 - #8	1002	\$15.95
#9 - #10	1003	\$15.95
#12	1004	\$15.95
#14	1005	\$15.95
9/32	1006	\$15.95
5/16	1007	\$15.95
11/32	1008	\$15.95
1/16 pipe	1050	\$15.95
1/8 pipe	1051	\$20.95

- Right or left hand threading
- Eases tap into work for better matching
- No spring plungers to wear or break
- 1/8" pullout for releasing
- 7/16 max straight tap
- 1/8" max pipe tap
- Only 1.35" overhang

ER16 TAP COLLETS

Tapping collets are manufactured with an internal square drive that keeps the tap from spinning within the collet during use.

Tap Size	Price
0-6	\$51.50
8	\$51.50
10	\$51.50
12	\$51.50
1/4	\$51.50
5/16	\$51.50



LARGE MULTIBAR INSERTS & HOLDERS

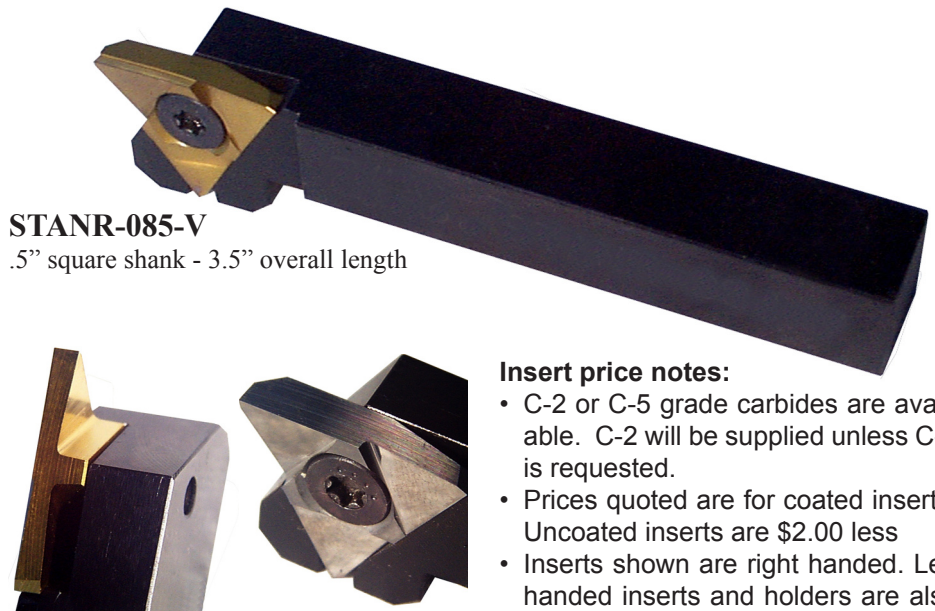
• Larger inserts are available for use with a square shank holder and Double holder. The inserts will take heavier and deeper cuts. These holders and inserts are best held with the *OmniPost-W*.

• The tool is held off the face of the tooling plate with the *OmniPost* and holder. This enables longer turns and "back" work.

• The inserts are very cost competitive. They have three cutting edges, so the cost of the insert is not much more than the other "standard" inserts.

STANR-085-V

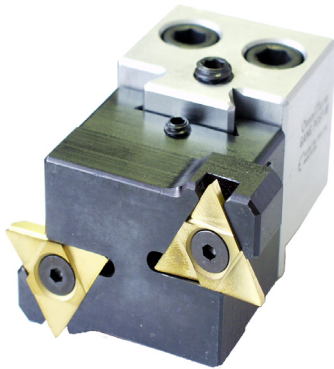
.5" square shank - 3.5" overall length



Insert price notes:

- C-2 or C-5 grade carbides are available. C-2 will be supplied unless C-5 is requested.
- Prices quoted are for coated inserts. Uncoated inserts are \$2.00 less
- Inserts shown are right handed. Left handed inserts and holders are also stocked.

LARGE MULTIBAR DOUBLE HOLDER



The MultiBar inserts can take large. At the same time you can save slide space with the dual insert holding design.

Dual Large MB holder \$125.00
Uses right handed inserts
Extra T-25 wrench \$2.95
Extra 4.67-127 screw \$1.95
Starter kit with inserts **PN-20LMSK \$358.00**

LARGE MULTIBAR



LARGE MULTIBAR IN A TF-625

STANR-085-V Right hand \$93.50
Starter kit with inserts PN-20MBSK \$315.50
Extra T-25 wrench \$2.95
Extra 4.76-127 screw \$1.95

Inserts for Starter Kits

(1) Front turn	TFTRB-5045
(2) Front turn	TFTR-5040
(1) Back turn	TBTR-5308
(1) Cut off	TCOR-5156
(1) Cut off	TCOR-5155
(1) Groove .062"	TNGR-5062
(1) Threading	TNVR-5093
(1) Threading	TNVR-5047
(1) Plunge and Turn	TTGR-5093
(1) Spare screw	4,76-127

Insert #	Width	D	R	Price
FRONT TURN				
TFTR-5040	.25	.44"	.000	\$21.01
TFTR-5045	.25	.44"	.005	\$22.80
TFTRB-5040*	.25	.44"	.000	\$22.80
TFTRB-5045*	.25	.44"	.005	\$24.60

* Notes chip breaker is ground on top edge

CUT OFF

TCOR-51510	.156	.44"	15	\$21.86
TCOR-5158	.125	.44"	15	\$22.07
TCOR-5156	.093	.44"	15	\$22.19
TCOR-5155	.078	.37"	15	\$22.32
TCOR-5154	.062	.30"	15	\$22.43
TCOR-5153	.047	.23"	15	\$22.77

THREADING 60 DEGREE

TNVR-5125	.125	.44"	.004	\$22.59
TNVR-5093	.093	.37"	.004	\$22.31
TNVR-5047	.047	.25"	.000	\$22.60

Thread form is centrally located

BACK TURN

TBTR-5308	.125	.44"	.000	\$22.77
TBTR-5306	.093	.37"	.000	\$22.93
TBTR-5305	.078	.30"	.000	\$23.17
TBTR-5304	.062	.23"	.000	\$23.32

GROOVING

TNGR-5156	.156	.44"	.000	\$21.86
TNGR-5125	.125	.44"	.000	\$22.07
TNGR-5093	.093	.37"	.000	\$22.19
TNGR-5078	.078	.37"	.000	\$22.32
TNGR-5062	.062	.30"	.000	\$22.43
TNGR-5047	.047	.23"	.000	\$22.77
TNGR-5040	.040	.18"	.000	\$22.93

PLUNGE & TURN

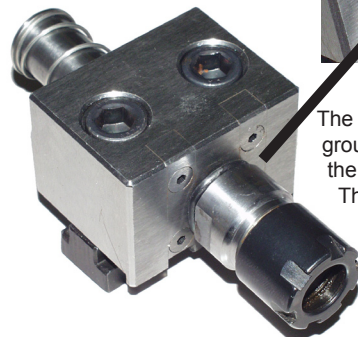
TTGR-5156	.156	.44"	.000	\$22.56
TTGR-5125	.125	.44"	.000	\$22.74
TTGR-5093	.093	.37"	.000	\$22.90
TTGR-5078	.078	.30"	.000	\$23.14
TTGR-5062	.062	.23"	.000	\$23.29

HEAVY DUTY TAPPING SPINDLE AND HOLDER

The heavy duty tapping unit is similar to the *OmniTurn OTC-16 Floating Tap Holder*. It will take the abuse of larger taps. The tapping spindle uses standard OTC-16 collets. It will also work with OTC-16T collets.

These tapping collets have a square broached into the back of the collet to positively drive the tap.

Heavy Duty Tap Holder \$275



The spindle has two ground flats that keep the spindle from turning. This system will take the abuse of high production tapping

OMNI TURN'S MULTIBAR TURNING SYSTEM

THE OMNI TURN MULTIBAR HOLDER AND INSERTS WERE SPECIALLY DESIGNED FOR SMALL PRECISION TURNING ON GANG TOOL LATHES.

NEW AND IMPROVED MULTIBAR IS MADE WITH MORE MATERIAL IN THE POCKET AREA FOR BETTER HOLDING POWER OF THE INSERT →



Ground edges, not pressed.

Most other inserts have edges that have been pressed and honed. This does not create a sharp cutting edge. When used, there is more tooling pressure created on the radius edge. This causes problems with small "fine" turning. It becomes harder to hold tight tolerances & good finishes, consistently. MultiBar inserts are all ground to a sharp edge with no radius, greatly reducing tooling pressure. Our inserts produce more good parts and last longer than the less expensive alternatives.

One Standard bar with the widest choice of inserts.

The MultiBar will accept many different type of inserts: *Front and Back turning, Cut-off, Grooving, Threading, Plunge*

and Turn. Working with one style bar and inserts, you will be able to cover most small turning needs.

The holder & inserts take less space than any other two cutting tools on the market!

Tooling space on gang tool lathes is always at a premium. The MultiBar under 1.1" wide, *including the inserts!!!*

For rigidity and longer life the MultiBar is made from hardened and ground 4140 steel.

The MultiBar is made so that you can extend the cutting tools off the face of the slide and still take a deep cut. The bar can be used for heavy roughing cuts, or fine, precise finishing work.

Specially designed geometries help take deeper cuts.

The back turning, plunge and turn inserts will cut to 3 times their width. You can do more back work resulting in fewer secondary operations.

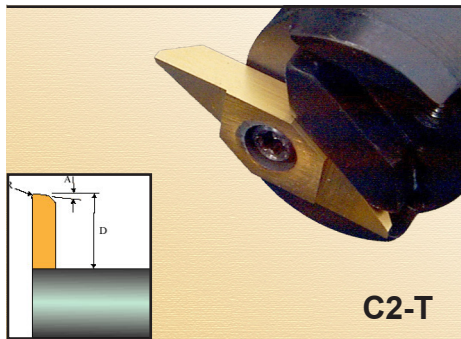
The inserts and bar can be used for larger internal cutting.

There is enough relief in the insert.

Try the MultiBar system with the starter kit.

The MultiBar has so many possible uses. We offer a Starter Kit that will help you experiment with the entire line of inserts. After you have tried this bar, and specially ground inserts, we are sure you will be sold on the MultiBar!

All inserts available in uncoated. Please call for availability.



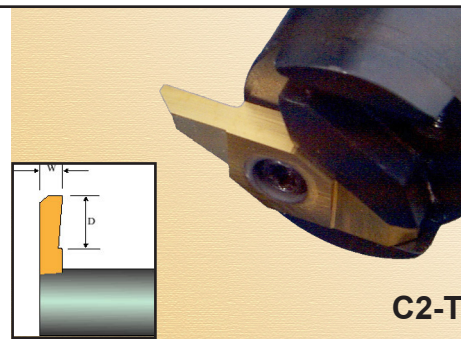
C2-T

FRONT TURNING

This insert can be used for general purpose turning. The .2" depth of cut can be used for most turning and facing operations. The 45 deg. clearance on the back side of the tool can be used to undercut for a thread.

Insert #	A	D	R	Price
VFTR-6M010	1	.2"	.000	\$17.60
VFTR-6M040	4	.2"	.000	\$17.60
VFTR-6M152	15	.2"	.002	\$19.08
VFTRB-6M152*	15	.2"	.002	\$20.16
VFTR-6M157	15	.2"	.007	\$19.08
VFTRB-6M157*	15	.2"	.007	\$20.16

* notes a chip breaker is ground onto the top edge

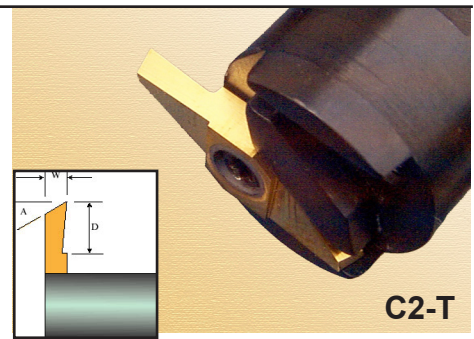


C2-T

BACK TURNING

The back turning insert can be used for turning behind a shoulder. This insert is ground on the front end so that it can easily plunge directly into the material before back turning.

Insert #	W	D	R	Price
VBTR-6M452	.031	.050"	.000	\$19.89
VBTR-6M453	.047	.085"	.000	\$19.62
VBTR-6M454	.062	.130"	.000	\$19.48
VBTR-6M455	.078	.200"	.000	\$19.33
VBTR-6M456	.093	.200"	.000	\$19.20

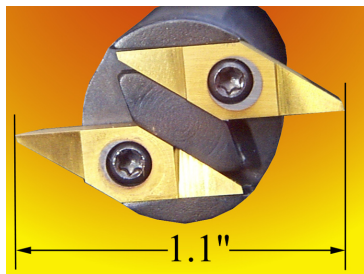


C2-T

CUT OFF

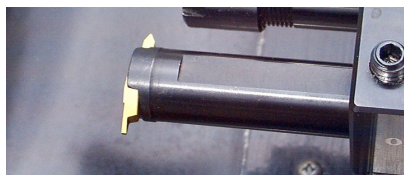
The cut off inserts are designed for small precision cut offs. The face angle is very steep to help reduce the cutoff tit.

Insert #	W	D	A	Price
VCOR-6M2520	.020	.050	25	\$19.67
VCOR-6M2525	.025	.065	25	\$19.48
VCOR-6M2531	.031	.090	25	\$19.28
VCOR-6M2040	.040	.100	20	\$19.17
VCOR-6M2047	.047	.130	20	\$19.05
VCOR-6M1562	.062	.160	15	\$18.87
VCOR-6M1578	.078	.200	15	\$18.64
VCOR-6M1593	.093	.200	15	\$18.59



**FIT MORE TOOLS
PER SETUP WITH THE
OMNITURN MULTIBAR!**

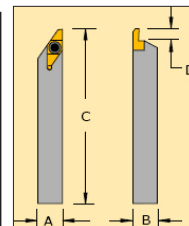
THE *MULTIBAR* PUTS TWO TURNING TOOLS IN THE SMALLEST AREA. THE WIDTH OF THE TOOL WITH INSERTS IS LESS THAN 1.1". BY USING THE *MULTIBAR* YOU CAN GET MORE TOOLS INTO THE SETUP WITHOUT COMPROMISING RIGIDITY.



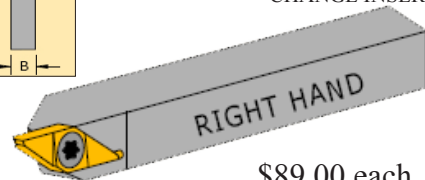
OMNITURN'S MULTIBAR

Heavy Duty Multibar 5/8" shank \$135.00
 Extra Torx wrench T-7 \$3.25
 Extra insert screws 2.40-064 \$3.00

- C-2 or C-5 grade carbides are available for all inserts.
- Unless requested, C-2 will be supplied.
- All prices quoted are for coated inserts. Uncoated are available, for \$1.25 less.
- All inserts shown are right handed. Left handed inserts are also stocked. They are available for special applications.



**6mm 35° SERIES TOOLING
SQUARE SHANK BAR**
 Front Turn, Back Turn, Cut-Off, Groove
 Thread, Plunge & Turn
 W/ ONE TOOLHOLDER JUST
 CHANGE INSERT



\$89.00 each

R.H. Holder No.	A	B	C	D
SVANR-07M6M-C	7mm	7mm	127mm	5mm
SVANR-08M6M-C	8mm	8mm	127mm	5mm
SVANR-10M6M-C	10mm	10mm	127mm	5mm
SVANR-12M6M-C	12mm	12mm	127mm	5mm
SVANR-3756M-C	.375	.375	5.00	.200
SVANR-5006M-C	.500	.500	5.00	.200
SVANR-6256M-C	.625	.625	5.00	.200
SVANR-7506M-C	.750	.750	5.00	.200
SCREW 2.40-064	WRENCH T-7			
\$3.00 each	\$3.25 each			

MULTIBAR STARTER KIT

(1) MultiBar PN S10DSVFNL6M2X

- (1) Front turn VFTR-6M040
- (2) Front turn VFTR-6M157
- (1) Back turn VBTR-6M455
- (1) Cut off VCOR-6M1578
- (1) Cut off VCOR-6M2047
- (1) Groove .031 VNGR-6M031
- (1) Threading VNVR-6M062
- (1) Threading VNVR-6M093
- (1) Plunge & turn VTGR-6M078
- (1) Spare screw 2.40-064

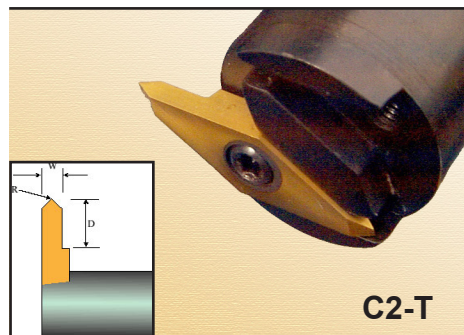


MultiBar Starter Kit PN-6MBSK \$288.00
Includes bar, torx wrench and screw

**FULL
RADIUS
INSERTS**



Insert #	W	D	R	Price
VFRR-6M010	.010	.03	.005	\$20.06
VFRR-6M015	.015	.04	.007	\$20.06
VFRR-6M020	.020	.05	.01	\$20.06
VFRR-6M025	.025	.065	.012	\$19.88
VFRR-6M030	.030	.09	.015	\$19.70
VFRR-6M040	.040	.10	.02	\$19.58
VFRR-6M047	.047	.13	.023	\$19.45
VFRR-6M062	.062	.16	.031	\$19.29
VFRR-6M078	.078	.20	.039	\$19.16
VFRR-6M093	.093	.20	.046	\$19.02

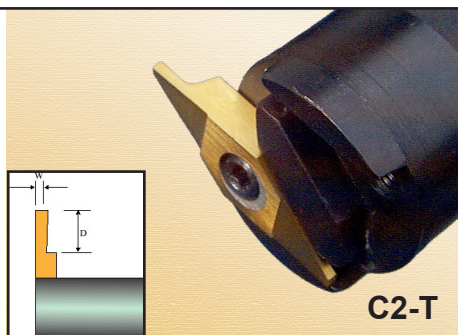


C2-T

THREADING

The threading inserts are designed for small precision work. The tip radius is very small. This creates less tool pressure. Tool width is less than other inserts. You can thread to shoulders without having to modify the tool.

Insert #	W	D	R	Price
VNVR-6M031	.031	.150	.000	\$19.19
VNVR-6M047	.047	.150	.002	\$19.19
VNVR-6M062	.062	.200	.002	\$18.87
VNVR-6M093	.093	.200	.004	\$18.59

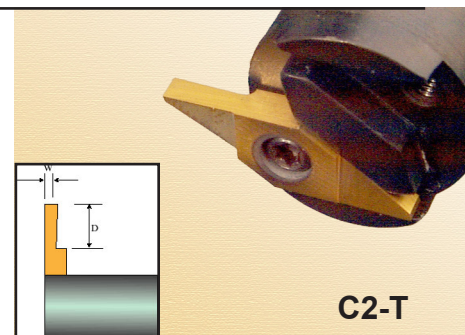


C2-T

GROOVING

These inserts are a single piece of carbide vs the small inserts that other grooving tool manufacturers use.

Insert #	W	D	R	Price
VNGR-6M020	.020	.050"	.000	\$19.67
VNGR-6M025	.025	.065"	.000	\$19.48
VNGR-6M031	.031	.090"	.000	\$19.28
VNGR-6M040	.040	.100"	.000	\$19.17
VNGR-6M047	.047	.130"	.000	\$19.04
VNGR-6M062	.062	.160"	.000	\$18.87
VNGR-6M078	.078	.200"	.000	\$18.73
VNGR-6M093	.093	.200"	.000	\$19.69



C2-T

PLUNGE AND TURN

The plunge and turn insert can also be used for back turning work. It does not have as much clearance and relief as the back turn insert. The front edge is parallel to the work piece.

Insert #	W	D	R	Price
VTGR-6M031	.031	.050"	.000	\$19.83
VTGR-6M047	.047	.085"	.000	\$19.62
VTGR-6M062	.062	.130"	.000	\$19.48
VTGR-6M078	.078	.200"	.000	\$19.33
VTGR-6M093	.093	.200"	.000	\$19.20

Indexable tools for small parts under .200" (5mm) diameter

CSV series

Features:

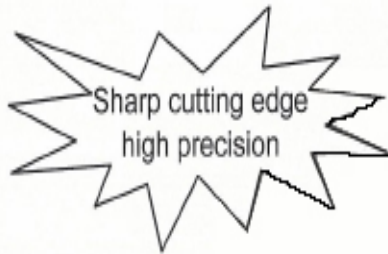
- The best tool for small parts under .200" (5mm) diameter
- Five types of inserts, front turning, back turning, cut off, grooving, and threading all fit one toolholder



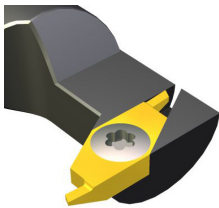
Part # DS-CSVL15.....\$158.00

Specs: 5/8" shank

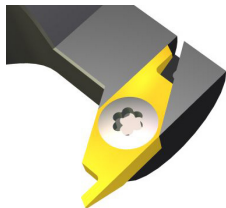
Spare parts	
Clamp screw	Wrench
LRIS-2.5x7	RLR-15S
\$3.15	\$4.88



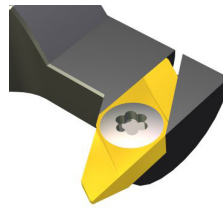
	Work material	Speed (SFM)	Feed (IPR)
VM1	Stainless steel	16~160	0.0002~0.002
	Free-cutting steel Alloy steel	16~230	
	Non-ferrous steel	16~260	



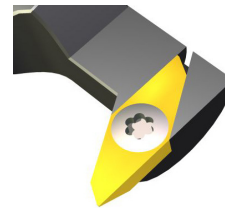
Cutoff chip breaker in bar



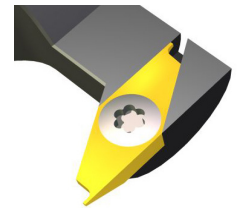
Cutoff in bar



Front turn chip breaker in bar



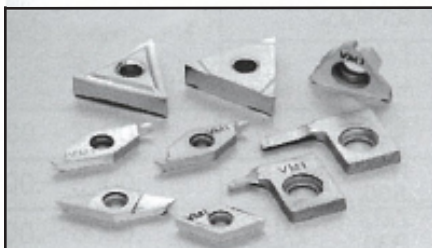
Front turn in bar



Groove in bar

VM1

TiCN thin coated layer

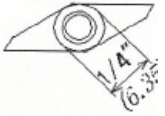

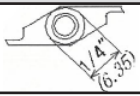

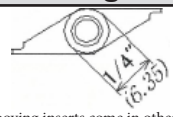


Color : Silver

VM1 coating maintains sharp cutting edge without losing wear resistance and thermal shock resistance.

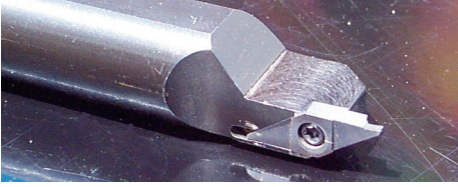
Recommended for:
Stainless, Steels, Alloy steels,
Micro machining applications

Work	Terminal	Material	12L13
460 SFM .0006 IPR .004" DOC WET			
	VM1	800~1000 pcs/edge	
	Competitor's coated carbide	150 pcs/edge	
VM1 provided stable dimension and micro-finish and showed five times longer tool life than competitor's.			

Multi series		Inserts for Bar # DS-CSV15			
Front Turning		CSVF style	(Polished)		
 Item Number	Chip breaker	Dimensions Inch (mm)			Price Each
		Max. Machining depth	Edge Shape (a x β°)		
CSVF11FR/V-M	No	-	.006 (0.15) x 2°		\$19.87
CSVF11FR/VB-M	Yes	.118 (3.00)	.006 (0.15) x 2°		\$21.20
Back Turning		CSVB style	(Polished)		
 Item Number	Chip breaker	Dimensions Inch (mm)			Price Each
		Cutting width W	Edge Shape (a x β°)		
CSVB11FR/V	No	.039 (1.00)	.012 (0.3) X 5°		\$19.87
CSVB11FR/V-M		.039 (1.00)	.006 (0.15) x 2°		\$19.87
CSVB11FR/VB	Yes	.039 (1.00)	.012 (0.3) X 5°		\$21.20
CSVB11FR/VB-M		.039 (1.00)	.006 (0.15) x 2°		\$21.20
Cut Off		CSVC style	(Polished)		
 Item Number	Chip breaker	Dimensions Inch (mm)			Price Each
		W	Max. cut-off depth	L	
CSVC11FR/V07	No	.028 (0.7)	.079 (2.0)	.098 (2.5)	\$19.87
CSVC11FR/ V10	No	.039 (1.0)	.098 (2.5)	118 (3.0)	\$19.87
CSVC11FR/V15	No	.059 (1.5)	.098 (2.5)	118 (3.0)	\$19.87
CSVC11FR/VB07	Yes	.028 (0.7)	.079 (2.0)	.098 (2.5)	\$21.20
CSVC11FR/VB10	Yes	.039 (1.0)	.098 (2.5)	118 (3.0)	\$21.20
CSVC11FR/VB15	Yes	.059 (1.5)	.098 (2.5)	118 (3.0)	\$21.20
Threading		CSVT style	(Polished)		
 Item Number	Chip breaker	Dimensions Inch (mm)			Price Each
		Pitch	Tool Nose Radius		
CSVT11FR/P60-035-A	No	.088 (0.2) ~ .020 (0.5)		.001 (0.03) MAX	\$23.84
CSVT11FR/P60-035-B					\$23.84
Grooving		CSVG style	(Polished)		
 Item Number	Chip breaker	Dimensions Inch (mm)			Price Each
		W	Max. Machining depth	L	
CSVG11FR/V025	No	.010 (0.25)	.006 (0.15)	.020 (0.50)	\$19.87
CSVG11FR/V035		.014 (0.35)			\$19.87
CSVG11FR/V050		.020 (0.50)			\$19.87
CSVG11FR/V060		.024 (0.60)	.018 (0.45)	.039 (1.00)	\$19.87
CSVG11FR/V070		.026 (0.65)			\$19.87
CSVG11FR/V075		.030 (0.75)			\$19.87
CSVG11FR/V090		.035 (0.90)	.005 (1.40)	.079 (2.00)	\$19.87
CSVG11FR/V100		.039 (1.00)			\$19.87
CSVG11FR/V120		.047 (1.20)			\$19.87
CSVG11FR/V140		.055 (1.40)	.102 (2.60)	.118 (3.00)	\$19.87
CSVG11FR/V157		.062 (1.57)			\$19.87

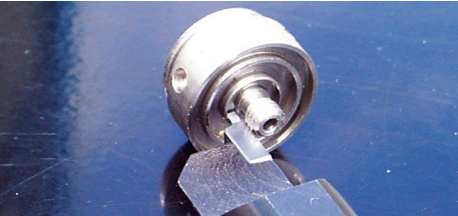
Grooving inserts come in other sizes. Please call for avail.

MULTIBAR TREPAN FACE GROOVING



Cutting a face groove can be difficult without the correct tooling. Here is a holder and insert that makes doing this easy. The holder has flats on both sides of the bar, it can be held with the cutter facing up or down.

- Min diameter .187" • Max diameter .750"
- From .05" to .2" depth of cut
- From .03" to .09" wide grooves
- C2 carbide with positive rake



SIDE CLEARANCE FOR SHOULDERS

MultiBar Face Groove bar \$175.00

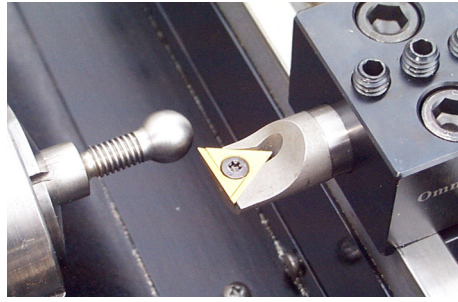
Insert #	Width	Depth	Min Major Dia	
VFGL-6M305025	.03"	.05"	.25"	\$23.95
VFGL-6M307550	.03"	.075"	.50"	\$23.95
VFGL-6M406025	.04"	.06"	.25"	\$23.95
VFGL-6M409050	.04"	.09"	.50"	\$23.95
VFGL-6M507530	.05"	.075"	.30"	\$23.95
VFGL-6M501060	.05"	.10"	.60"	\$23.95
VFGL-6M608030	.06"	.08"	.30"	\$23.95
VFGL-6M601060	.06"	.10"	.60"	\$23.95
VFGL-6M709030	.07"	.09"	.30"	\$23.95
VFGL-6M701260	.07"	.12"	.60"	\$23.95
VFGL-6M801030	.08"	.10"	.30"	\$23.95
VFGL-6M801460	.08"	.14"	.60"	\$23.95
VFGL-6M901430	.09"	.14"	.30"	\$23.95
VFGL-6M902060	.09"	.20"	.60"	\$23.95
Extra Torx wrench T-7				\$2.25
Extra insert screws 2.40-064				\$3.00

MULTIBAR RIGHT HAND BARS, LEFT HAND INSERTS.

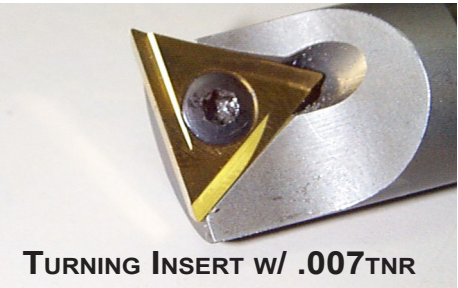
Right handed bars are now in stock. The price for the bar and inserts is the same as the left handed ones.



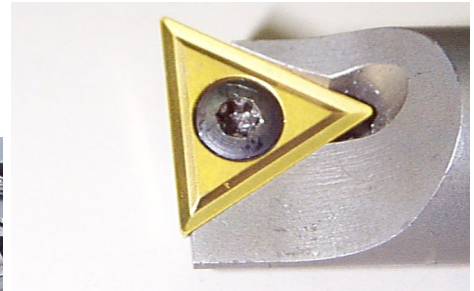
LEFT HANDED TURNING AND THREADING TOOL



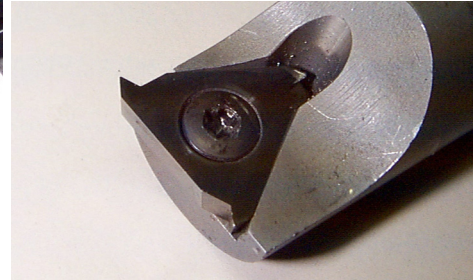
This is a 5/8" round shank turning bar. The rake angle is 0 deg. The tool is very useful for heavy turning and light facing. The tool is very rigid and the insert is well supported. Threading inserts are also available.



TURNING INSERT W/ .007TNR



TURNING INSERT W/ .015 TNR



THREADING INSERT

Left Handed Turning Tool \$114.50

Spare screw - SC-30 \$2.35

Turning

TPGH-3205-CG5 \$15.95

Left Handed Turning w/.007 TNR \$14.85

TPGH-321-CG5 \$14.85

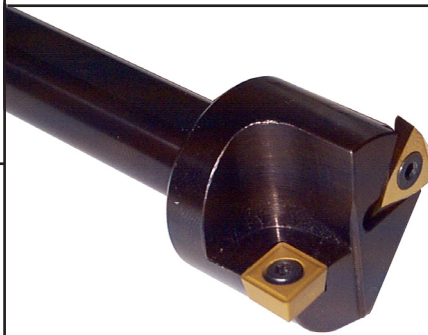
Left Handed Turning w/.015 TNR \$14.85

Threading

Left Handed Threading THD-005 \$24.75

Starter kit, includes one bar and 10 inserts

LH bar, (3) TPGH-320, (3) TPGH-321, (4) THD-005 \$293.25



OMNI-TURN'S T/T TOOL SAVES SPACE AND TIME

Inserts

Threading 375-TD \$16.95 ea
Threading insert for T/T Tool (sold in box of 10), 3 sided, coated

Turning OMTN-007 \$14.90 ea
Turning insert for T/T Tool (sold in box of 10), 2 edged, coated, .005" TNR

Turning OMTN-15 \$12.90 ea
Turning insert for T/T Tool (sold in box of 10), 2 edged, coated, .015" TNR

Accessories

FT-9 Torx wrench for threading insert \$3.50

VR-1 Screw for threading insert \$3.50

MS1027 Screw for turning insert \$3.50

T/T Tool Holder only \$135.00

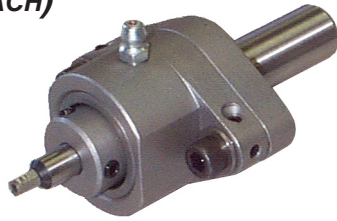
T/T Starter Kit \$270.00

Includes:

(3) OMTN-007 (3) OMTN-015 (4) 375-TD10

With gang tooling lathes, space is at a premium. Shank style holders take up much less space on the slide!

ROTATING BROACH (WOBBLE BROACH)



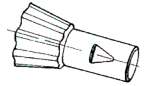
This tool is used to produce hexagon, square, and other irregular internal shapes in the workpiece as it is rotating in the spindle of the machine. Minimal tool driving force is required due to the spindle offset which distributes the load of the cut. The tool holder spindle, which is mounted in ball bearings, rotates freely with the workpiece and does not require auxiliary driving attachments.

HEX - METRIC

HEX	FLATS	DEPTH	PART #	PRICE
1.5mm	.0605	3/32	HX00-1.5	\$51
2.0mm	.0805	7/64	HX00-2.0	\$51
2.5mm	.1005	5/32	HX00-2.5	\$51
3.0mm	.1205	3/16	HX00-3.0	\$51
4.0mm	.1605	1/4	HX00-4.0	\$51
5.0mm	.1995	5/16	HX00-5.0	\$51
6.0mm	.2395	3/8	HX00-6.0	\$51

SOMMA OFFSET ROTATING BROACH TOOL

5/8" shank, 2" overhang, 1-1/2" width \$705.00



TORX

TORX	PART #	PRICE
T5	TO00-T5	P.O.R.
T6	TO00-T6	P.O.R.
T7	TO00-T7	P.O.R.
T8	TO00-T8	P.O.R.
T9	TO00-T9	P.O.R.
T10	TO00-T10	P.O.R.
T15	TO00-T15	P.O.R.
T20	TO00-T20	P.O.R.
T25	TO00-T25	P.O.R.
T27	TO00-T27	P.O.R.
T30	TO00-T30	P.O.R.
T40	TO00-T40	P.O.R.
T45	TO00-T45	P.O.R.

HEX - INCH

HEX	FLATS	DEPTH	PART #	PRICE
.050	.0505	5/64	HX00-.050	\$51.
1/16	.0630	3/32	HX00-1/16	\$51.
5/64	.0786	7/64	HX00-5/64	\$51.
3/32	.0947	9/64	HX00-3/32	\$51.
7/64	.1106	5/32	HX00-7/64	\$51.
1/8	.1265	3/16	HX00-1/8	\$51.
9/64	.1421	7/32	HX00-9/64	\$51.
5/32	.1582	1/4	HX00-5/32	\$51.
3/16	.1895	9/32	HX00-3/16	\$51.
7/32	.2212	11/32	HX00-7/32	\$51.
1/4	.2525	3/8	HX00-1/4	\$51.

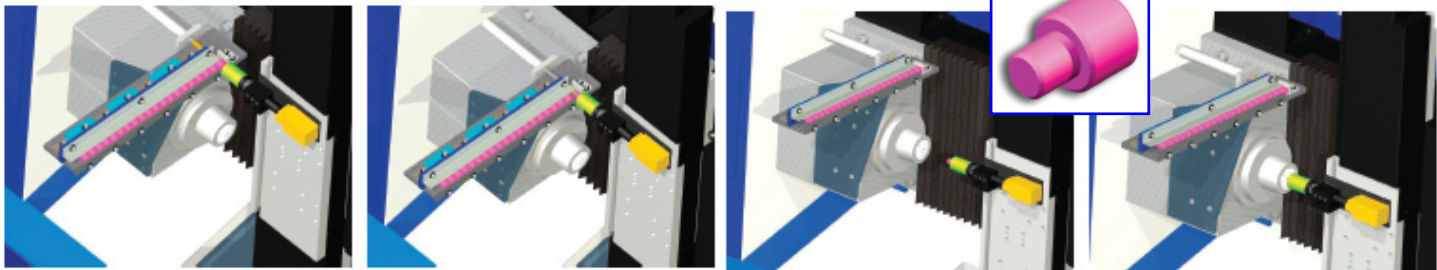
SQUARE - INCH

HEX	FLATS	DEPTH	PART #	PRICE
3/32	.0947	9/64	SQ00-3/32	\$51
1/8	.1265	3/16	SQ00-1/8	\$51
5/32	.1582	1/4	SQ00-5/32	\$51
3/16	.1895	9/32	SQ00-3/16	\$51
7/32	.2212	11/32	SQ00-7/32	\$51

Simple automation for GT series machines

- Installs in minutes by the end user
- Universal design makes it very versital
- Setup in less than 1/2 hour
- 5-6 second typical load/unload times
- In expensive

TRACK LOADER FOR PART WITHOUT HOLE



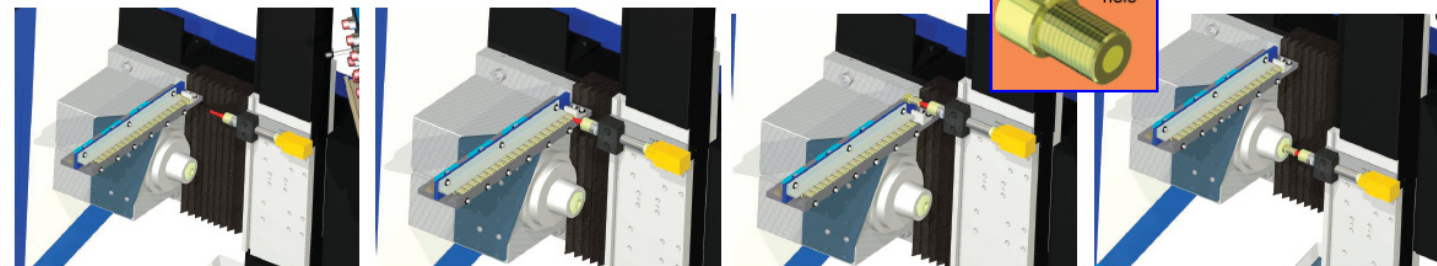
Position pickup cup in front of last part in track

Push part into pickup cup

Position part in cup in front of the spindle

Push part into collet

TRACK LOADER FOR PART WITH HOLE



Position loader pin in front of last part in track

Insert pin into part

Lift part out of track with X (-) move

Push part into collet

BASIC TRACK LOADER	\$1,500.00
PART PUSHER PISTON - INCLUDES BLANK PUSHER TIP, FLOW ONTROLS, SOLENOID AND REGULATOR.....	\$ 475.00
PICKUP PIN CUP ASSEMBLY - WITH QUICK CHANGE EFFECTOR - INCLUDES TOOL BLOCK, SPRING LOADED BASE ASSEMBLY, BLANK CUP OR PIN, SAFETY SWITCH WITH MOUNTAING PLATE AND WIRING INTRUCTIONS.....	\$ 475.00

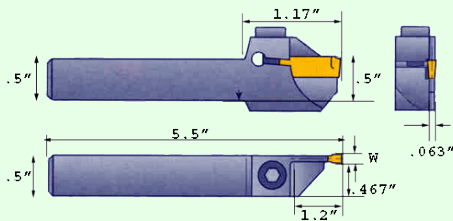
11/16" x 1/16" CUTOFF BLADE



Iscar Cut Off Blade \$ 99.80

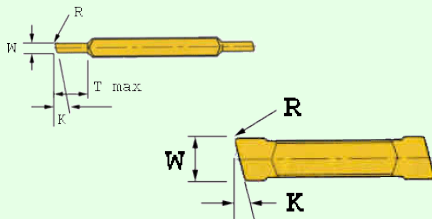
W	Part #	R	K	Price
.087"	GFR 2-4D	.006	4	\$11.70
.087"	GFR 2-6D	.006	6	\$11.70
.087"	GFR 2-8D	.006	8	\$11.70
.087"	GFR 2-15D	.006	15	\$11.70
.087"	GFR 2S-15	.001	15	\$12.50

ISCAR CUT OFF BAR



**HOLDER MODEL: ISCAR CUT OFF BAR
PRICE: \$ 98.90**

- First choice for soft materials, parting of tubes, small diameters and thin-walled parts.
- Cutting edge with positive rake.
- General applications on low carbon steel, allow steel, austenitic stainless steel.
- -Low to medium feed.



W	PART #	R	T	K
.039"	DGR 1001J-8D	.003"	.118"	8
.055"	DGR 1402J-8D	.006"	.591"	8
.055"	DGR 1400JS-15D	.001"	.591"	15
.059"	DGR 1500J-8D	.002"	.709"	8
.087"	DGR 2202J-6D	.008"	.709"	6
.087"	DGR 2200JS-6D	.001"	.709"	6
.087"	DGR 2200JS-15D	.001"	.709"	15
.118"	HGR 3002J-6D	.008"	NL	6
.118"	HGR 3000JS-15D	.001"	NL	16

DGR 1001J-8D	\$20.95
DGR 1402J-8D	\$18.30
DGR 1400JS-15D	\$18.30
DGR 1500J-8D	\$18.30
DGR 2202J-6D	\$18.30
DGR 2200JS-6D	\$18.30
DGR 2200JS-15D	\$18.30
HGR 3002J-6D	\$18.30
HGR 3000JS-15D	\$18.30

4.5" - 3 JAW AUTOMATIC CHUCK

Part Number 000-02-01
 Dia.: 4.5"
 Max radial stroke: .19",
 .13" w/ Dunham CC
 Max RPM: 5000rpm
 Weight:
 Through hole: 1"
 OD or ID holding Yes
 Max gripping force 5,000#

4.5" 3 jaw automatic chuck:

Includes 1 set of jaws, adapter plate for spindle nose, adapter for between draw tube and chuck actuator

000-03-001 \$3,195.00
 Steel jaw set - 2" high \$228.00
 000-02-002 (KW-4-s)
 Aluminum Pie jaw set - 2" high \$79.00
 000-02-004 (KW-4-p)
 Aluminum jaw set - 1 1/2" high \$105.00
 000-02-003

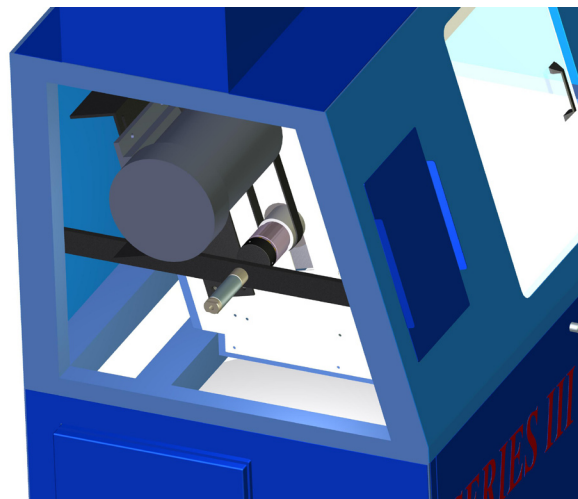


VERY SENSITIVE LOW PRESSURE DRAW TUBE

When you want to hold sensitive parts with less than 200 lbs of force, with the Dunham Pneumatic Draw Tube it becomes unreliable below 10 psi (200 lbs of force). The sensitive Omnium collet closure can be easily and repetitively configured to maintain exact collet pressure down to 15 lbs.



- Extremely low inertia
- Start & Stop - short cycles quicker
- Much less mass - will run at higher rpm with no vibration
- No bearings or seals to create heat. This system runs cool all day long at all speeds
- Easily retrofit able in the field to existing GT-75's or GT-Jr's. Once installed, change over between the Dunham and sensitive draw tube is only 10 minutes..... \$975.00



SPINDLE LINERS

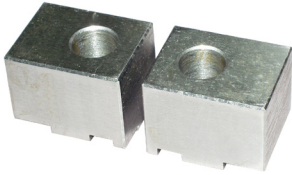
Model	S	Cost
1/8"	S	\$150
3/16"		\$150
1/4"	S	\$150
5/16"		\$150
3/8"	S	\$150
7/16"		\$150
1/2"	S	\$150
5/8"	S	\$150
3/4"	S	\$150
Special Orders		\$195

OmniTurn is now offering a new style of spindle liner. A cast Polyurethane liner. This new style liner supports the bar better, helps dampen bar whip and vibration, and weighs less. Custom ID shapes and sizes are available, POR. Excellent liners for square, hex and extruded shapes.



3" - 2 JAW AUTOMATIC CHUCK

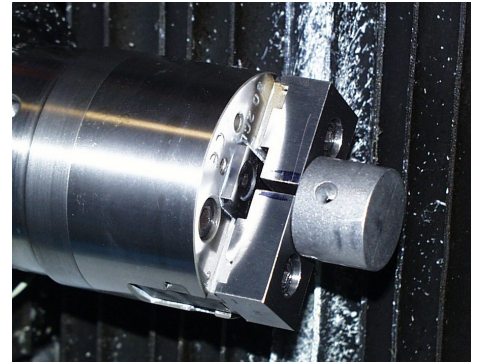
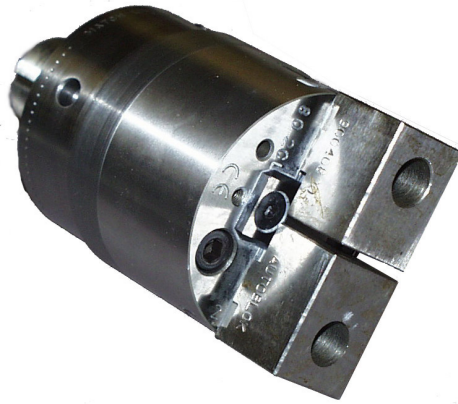
Part Number 000-03-001
 Dia.: 3.15"
 Max stroke: .35" diameter
 Max RPM: 6000rpm
 Weight:
 Through hole: None - blind
 OD or ID holding Yes



STANDARD JAWS ARE 1" HIGH



PIE JAWS FOR SPECIAL FIXTURING



Holding internally - expansion

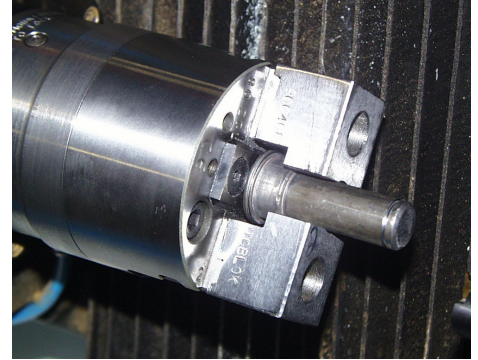
3" 2 jaw automatic chuck:

Includes 1 set of steel jaws, adapter plate for spindle nose, adapter for between draw tube and chuck actuator

000-03-001 \$2,295.00

Jaw Sets

Steel jaw set - 1" high	000-03-002	\$55.00
Aluminum set - 1" high	000-03-003	\$50.00
Steel set - 1.3" high	000-03-004	\$65.00
Aluminum set 1.3" high	000-03-005	\$60.00
Steel pie set - 1.3" high	000-03-006	\$125.00
Aluminum pie set 1.3" high	000-03-007	\$120.00



External holding

4" - 3 JAW AUTOMATIC CHUCK

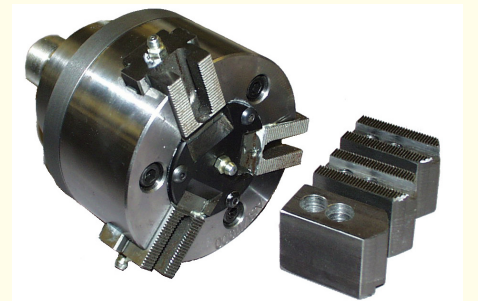
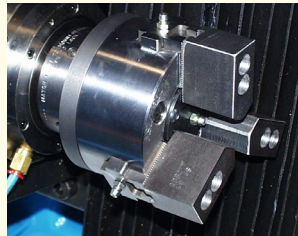
Model: 000-04-001
 Dia.: 4"
 Max radial stroke: .19"
 .13" with Dunham CC
 Max RPM: 5000rpm
 Weight:
 Through hole: None - blind
 OD or ID holding Yes
 Max gripping force 5,000#

Your Choice:

Draw Tube Activated or Air Tube Activated

4" 3 jaw 000-04-001 \$2,600.00

Steel jaws - 1.5" high	000-04-002	\$90.00
Aluminum jaws- 1.5" high	000-04-003	\$92.00
Aluminum Pie jaws- 2" high	000-04-004	\$98.00



5C LATHE CHUCK ADAPTORS FOR 3-JAW CHUCKS

FEATURES:

- PRECISION ENGINEERED FOR EXACTING TOLERANCES
- OFFERS LATHE CHUCK ACCESS TO ANY 5C SPINDLE
- USE YOUR CHUCK ON MILLS, GRINDING MACHINES,
- LATHES AND DRILL PRESSES

CHUCK ADAPTER

DIA	
3"	\$49.00
4"	\$59.00



5C PRECISION LATHE CHUCKS

3-JAW SELF-CENTERING SCROLL

FEATURES:

- ELIMINATES TEARING DOWN A COLLET SET UP ON A LATHE
- WORKS WITH ANY 5C TOOLING

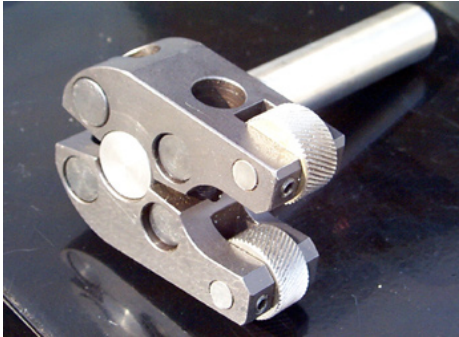
CHUCK

DIA	
3"	\$148.00
4"	\$155.00

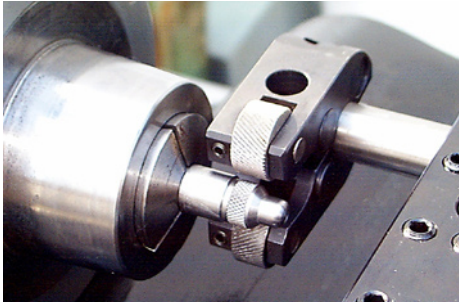


AccuTrak Two-Die Straddle Holder for Knurling and Threading

Capacity: .19 to 1"
 Head width: 2.45"
 Head thickness: .875"
 Die size: 3/4" dia, 3/8" wide, 1/4" hole



AccuTrak Knurl Holder \$358.00



AccuTrak's Holder is Easy to Set Up and Adjust for Size

The holder uses two knurling dies held in an adjustable yoke. It is easy to center the holder so there is even pressure on both dies. The adjustment for size is done with a screw.

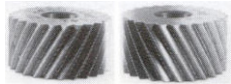
Straight Tooth Knurls -



\$13.80 ea HSS \$18.55 ea Cobalt

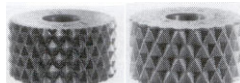
TPI / TEETH	TPI / TEETH	TPI / TEETH	TPI / TEETH
8, 19 (90°)	20, 23 (90°)	12, 28 (90°)	14, 34 (90°)
16, 38 (90°)	20, 47 (90°)	21, 50 (90°)	25, 59 (90°)
30, 71 (90°)	33, 77 (90°)	35, 82 (90°)	40, 94 (90°)
35, 82 (70°)	50, 117 (70°)	60, 141 (70°)	80, 189 (70°)

30° Spiral Knurls - RH or LH



\$13.80 ea HSS \$18.55 ea Cobalt

8, 16 (90°)	10, 20 (90°)	12, 25 (90°)	14, 34 (90°)
16, 33 (90°)	20, 41 (90°)	21, 50 (90°)	25, 51 (90°)
30, 61 (90°)	33, 77 (90°)	35, 71 (90°)	40, 81 (90°)
50, 102 (70°)	80, 163 (70°)		



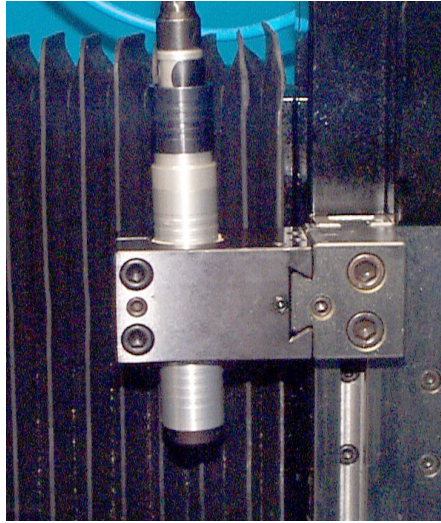
30° Diamond Knurls - Male or Female

12, 25 (90°)	16, 33 (90°)	20, 41 (90°)	25, 51 (90°)
30, 61 (90°)	40, 81 (90°)	50, 102 (70°)	80, 163 (70°)

\$19.95 ea HSS \$27.95 ea Cobalt

FOREDOM

LIGHT DUTY SPINDLES AND DRIVE



The Foredom spindle and motor combination are great for light duty, high rpm applications. We have many users milling and slotting in brass and aluminum. Drilling small holes in all material with the 20,000 rpm is great is

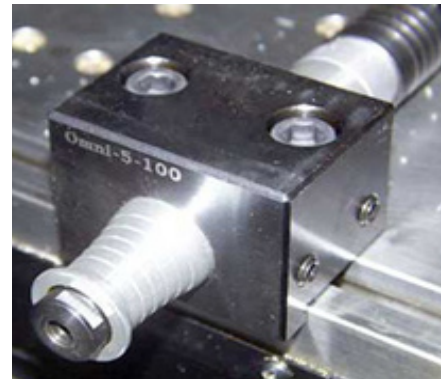
Specifications

Speed: 20,000 rpm max
 Power: 1/4 hp at full rpm
 Voltage: 220V single phase
 Spindle OD: 1"

Requirements:

M function controlled outlet for 220V three phase. Can be used on all Omni-Turns, to be used automatically it should be used with a C axis spindle drive

Drilling on center is possible with this spindle and an OmniTurn with a 1/2" Center height. Below is an Omni 5-100. It has a 1" bore, on center. Holders and bushings for the 1" diameter are also available. Check the Aug 98 catalog for details and pricing.



Foredom Kit \$595
 Includes: (1) spindle with nut, (1) drive shaft, (1) drive motor, (2) collets - 1/8" and 1/4", (1) motor speed controller

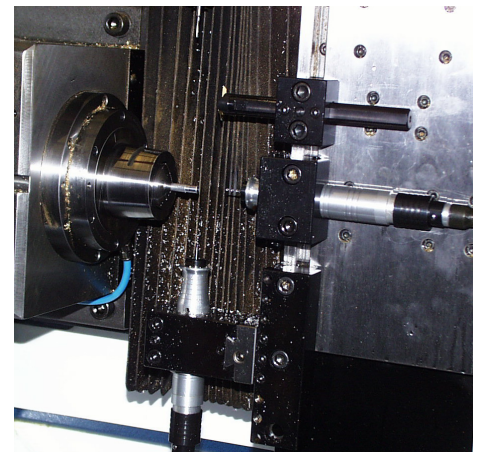
Spare parts

Foredom motor	\$315.00
Drive shaft	\$95.00
Spindle	\$95.00
Motor control	\$105.00
Hang kit (see below)	\$75.00
Collets (see below)	\$10.00
Set of 7 collets	\$85.00



FOREDOM COLLETS

1/16"	441	\$10
3/32"	442	\$10
3mm	448	\$10
1/8"	443	\$10
5/32" / 4mm	444	\$10
6mm	449	\$10
1/4"	447	\$10
Complete set	440	\$55



CABLE DRIVEN SPINDLES AND DRIVES

OmniTurn offers a series of different Suhner spindles and drives that cover a large range of needs. Much of the Suhner accessories can be mixed and

matched in many different configurations. If you would like our opinion on how to tool up your job, give us a call.

BEWI-4 AND BEWI-6 SPINDLES



Unless you have a special reason to go the larger BEWI-6 we recommend the smaller unit for most applications. Here are a few notes on some of the issues.

The BEWI-6 is substantially longer than the BEWI-4. The cable is also much longer before it can bend. This combined length will create problems with the sheetmetal enclosure of the GT-75. If you are planning on using the quill with a vertical holder, you will not be able to use the Lexan front door. (See adapter below)

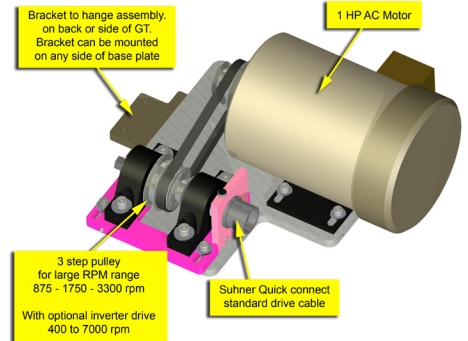
Cross drilling is also an issue with the larger BEWI-6. The unit can only be used from the top (X-). The cable must then go through the top of the cabinet. The BEWI-4 can be snaked through the cabinet and out a hole in the back

Spindle	OD	Collet	Fitting	Cable	Cost
BEWI-4	30mm	ER-16 13/32" max	G22	NA7	\$515.00
BEWI-6	40mm	ER-16 13/32" max	G28	NA12	\$735.00
OMNI-36	36mm	ER-16 13/32" max	G12/G28	NA7/NA12	\$845.00

Cable	Connector	Length	Capacity	Cost
NA7 complete	DIN10/G22	2000mm	5/32"	\$395.00
NA7 core only				\$170.00
NA7 case only				\$225.00
NA12 complete	DIN10/G28	2000mm	1/4"	\$510.00
NA12 core only				\$225.00
NA12 case only				\$285.00

Drive	Voltage	Connector	HP	RPM	Cost
MiniFix	220V 1 phase	DIN10	1/2		\$895.00
OmniTurn CD	220V 1 or 3 phase	DIN10	1	875-3300	\$1,150.00
OmniTurn CDVS	220V 1 or 3 phase	DIN10	1	400-7000	\$1750.00

OMNITURN LIVE TOOL CABLE DRIVE



With Optional Inverter Drive.....\$1,800.00
Without Optional Inverter Drive.....\$1,200.00

NA12 RIGHT ANGLE ADAPTER



The right angle gear head adapter can be used with the BEWI-6 spindle. It has a 1:1 speed ratio. With this unit it is possible to use the larger spindle vertically without modifying the machine or enclosure interference.

NA12 Right angle adapter \$625.00

LIVE TOOL KITS

CABLE DRIVE SYSTEM

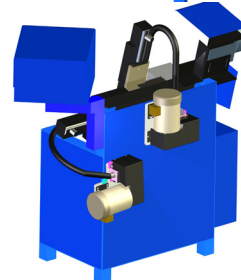
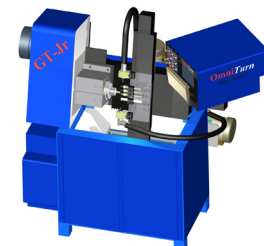
Cable Drive, BEWI-4 Spindle	
NA7 or NA12 Drive Cable	
.....VS with NA7	\$2,100.00
.....CDVS with NA7	\$2,700.00
.....VS with NA12	\$2,200.00
.....CDVS with NA12	\$2,800.00

CABLE DRIVE PRECISION SYSTEM

Cable Drive, Omni-36 Spindle	
Spline and Adaptor NA7 or NA12 Drive Cable	
.....VS with NA7	\$2,800.00
.....CDVS with NA7	\$3,400.00
.....VS with NA12	\$2,900.00
.....CDVS with NA12	\$3,500.00

Requirements:

M function controlled outlet for 220V three phase. Can be used on all OmniTurns, to be used automatically it should be used with a C axis spindle drive



NSK

ULTRA PRECISION AIR MOTORS, SPINDLES AND ATTACHMENTS

The Astro system components are threaded together to form a complete assembly. The spindles, motors, and reducers can be interchanged to create the desired RPM and spindle orientation.

Contact us for additional literature and documentation. Other items offered:
60,000 and 120,000 rpm motors



Controlling Live Tooling

The live tools have to be turned on and off in the program. This is done by M functions turning on solenoids. Two are standard with the GT-75. If you are using only one live tool the additional I/O are usually not needed. If you are going to turn on two or more, then the optional I/O is suggested.

M25/26: This is available if the machine does not have a parts catcher.

M19: This function is used to put the spindle into the positioning mode.

Additional I/O Option: adds up to 8 inputs and 6 outputs. Contact the factory for pricing and specifications.

AIR MOTOR SPINDLES - STARTING AT... \$1,070.00

High Volume Solenoids for Live Tools

The use of pneumatic tools requires the addition of controlled solenoids. OmniTurn offers factory installed controls that include a Filter/Lubricator/Regulator with enough flow for the NSK tools. Live tools are M function activated.

- (1) Solenoid with FRL Filter, Lubricator, Regulator \$395
- (2) Solenoids with (1) FRL \$595
- Mobile White Rex 425 Oil 32oz \$ 21

E2530 SERIES COMBINATION 30,000 MIN (RPM)



Control Unit.....\$920.00
Model: NE236
Power Source: AC115V/230V,50-60Hz (Switchable type)
Power Consumption: 125W
Weight: 3.6kg
Dimensions: W108 x D156 x H175mm



Motor.....\$863.00
Model: EM25-5000-J4
Description: Brushless Motor (cord with quick disconnect)



Spindle.....\$410.00
Model: NR303
Description: Spindle accuracy within 2µm

Collets sold separately

Total.....\$2,193.00

SPEED REDUCERS



● If the speed reducer is connected between the motor and the spindle, it reduces the rotating speed and increases the torque while keeping the motor speed unchanged.

Maximum allowable motor speed 30,000 min⁻¹
Maximum rotating speed at the cutting tool <Reduction Ratio : 1/4> 7,500 min⁻¹

● Speed Reducing Mechanism By planetary gear system

Cat. No.	Model	Outside Diameter	Speed Red. Ratio	Price
AS81826P	ARG-H2504N	Ø1.0" (Ø25.4mm)	1/4	\$164.00
AS81828P	ARG-H2516N	Ø1.0" (Ø25.4mm)	1/16	\$202.00

Please contact us for additional NSK information. (631) 694-9400.

They have a wide variety of live tooling available.

E2550 SERIES COMBINATION 50,000 MIN (RPM)



UNIT SPECIFICATIONS

Model - NE145
Power Source - AC115V/230V(switchable type) 50-60Hz
Power Consumption - 92W
Weight - 3.6kg
Dimensions - W108 x D156 x H175mm

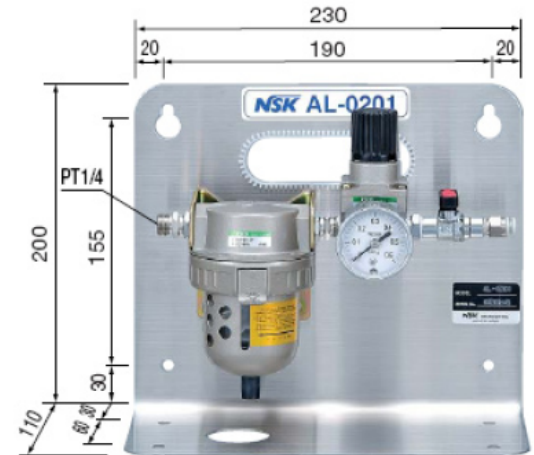
MOTOR & SPINDLE

Motor - EM25N-5000-J4
Spindle - NR-2551
Speed - 5,000-50,000min-1(rpm)
500 min-1(rpm) : for centering
Weight - 1 lb 1.99 oz. (w/o motor cable)
Dimensions - ø0.98" x 7.40" mm

E2550, NR-2551 COMBINATION

Cat. No.	Model	Product	Price
AS88323	NE145	Control Unit	\$1,400
AS88322P	EM25N-5000-J4	Brushless Motor	\$ 863
AS81820P	NR-H2551	Spindle	\$ 762
TOTAL.....			\$3,025

Cat. No. ALO201 AIR LINE KIT AL-0201



● The AL-0201 is Clean air supply unit for the ASTRO-E 2550 control unit. The dust and moisture in the compressed air are eliminated by the filter in the first stage and regulator provides accurate and stable air to the control unit.

Air Line Kit (For ø6 mm Hose · Filter Mesh 0.3 µm)

CAT. No.	Model	Standard Equipment · Accessories	Price
AL0201	AL-0201	<ul style="list-style-type: none"> • Air Filter • Air Regulator • Air Pressure Gauge • Air ON-OFF Valve • Hose for Piping (K-260) : 2 m 	\$277.00

SPINDLE DRIVE AND MOTOR COMPARTMENT COMPONENTS

GT-75 / GT-JR DUNHAM COLLET CLOSERS



Dunham Collet Closer w/ Drawtube	- 693-08-200	\$1,750
Dunham Drawtube Only	- 693-08-211	\$ 202
Collet Closer Rebuild Kit	- 993-09-001	\$ 230
Dunham Bearings Only	- 693-08-202	\$ 205
Seal Kit		\$ 25
Seal Kit w/ Draw Tube Seal		\$ 47
Draw Tube Lock	-693-08-210	\$ 50
Anti-Rotation Bracket	-693-01-001	\$ 39
Air Lubricator Assembly	-697-11-003	\$ 92
Fitting		\$ 5

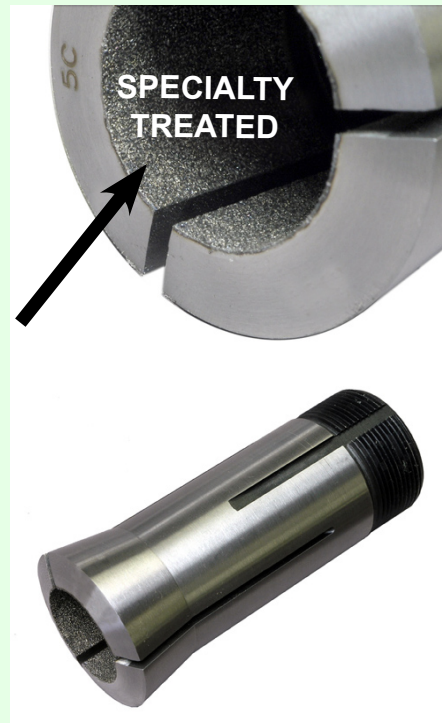
SUPER GRIP 5c COLLETS..\$95

These collets have been specialty coated to prevent slippage of the material this makes for a much better hold.

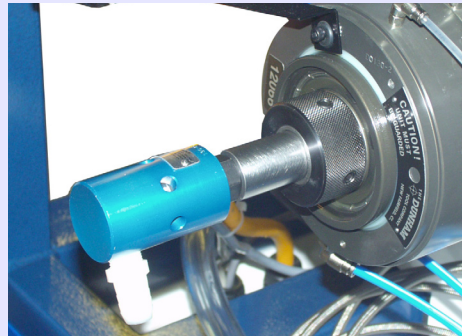
NO MORE PUSH BACK
REDUCES COLLET CLOSER PRESSURE
COLLET ID IS NOW Rc 70 AND HIGHER

SIZES
1/2", 5/8", 3/4", 7/8" AND 1"

Please call for availability of other sizes.



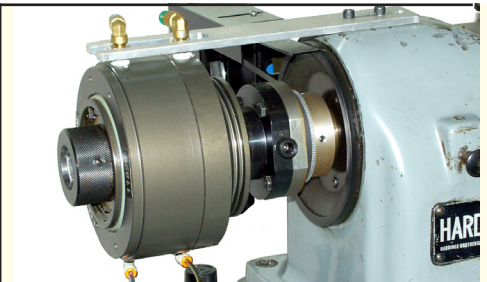
THROUGH SPINDLE COOLANT AND AIR BLASTS



GET BETTER TOOLING LIFE
WITH LESS CHIP PROBLEMS

New options for GT-75 and GT-Jr's: Through the spindle coolant and air blasts can be job savers. The issues of getting the coolant through the spindle to cool and lubricate the part can help improve tool life. Maintaining tolerance consistency is also helped. With both the coolant and air systems we have to change the draw tube for the collet closer and add solenoids for M function control. The addition of these options is easily done in the field by either one of our techs or by a knowledgeable end user. The same solenoids can be used to support tools or tool holders built to accept it. Such as Circle's boring tools with the through the tool coolant option.

Through spindle coolant	\$950
Through spindle air blast	\$750
Combined system	\$1,500

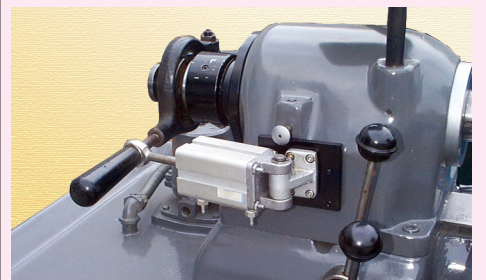


PNEUMATIC DRAW TUBE TYPE

All kits mount in minutes. The draw bar offers longer stroke, this helps with bars that vary some in diameter. Collet pressure is consistent, this helps with soft & thin walled parts

Dunham low speed version	\$1,750.00
Dunham high speed version (shown above) 4,000 rpm max, includes lubrication system	\$2,595.00
Powerhold 5000 rpm max	\$2,250.00

PNEUMATIC COLLET CLOSERS



Piston type collet closer kits are available for machines that already have a manual lever type collet closer. This is a great system for secondary work. The piston can be activated 3 ways:

Push buttons on the operator station, M functions in the control, Or the lever can still be manually operated. Part or bar size must be consistent for use with this type of closer.

M function & push button controlled collet closers make the OmniTurn more productive.

OmniTurn lever type closer	\$795.00
----------------------------	----------

OmniTurn Automation

Automation has become an important tool to be used to survive in today's difficult market. The OmniTurn system has been designed with automation in mind.

Automation can be easy or a nightmare. There are so many issues that must to be taken into account or they can get out of hand if you don't have the prior experience.

- *Qualify length from a dimension off the part. This can be from the front* - *Concentricity* - *Chips*
- *Orientation* - *Change over time for similar parts* - *Part consistency* - *Cost* - *Cycle time*
- *Finished part unloading* - *Work holding* - *Fault resets and automation* - *Vibratory bowl interface*
- *Documentation for operator use, setup, and troubleshooting* - *Schematics and spare parts lists*

 <p>3 second Load/unload Held on the OD, drilled 14 holes, bored the ID, Qualified the overall length</p>	 <p>6 second Load/unload Held on the OD, Finished the radius on the face.</p>	 <p>3 second Load/unload Held on the OD, Turn, Bore, Drill, Ramp Broach, Deburr.</p>	 <p>10 second Load/unload One of a family of parts, load and unload without damaging finish 10 minute change over,</p>	 <p>8 second Load/unload Thin sheet metal stamping. Work holding was an issue.</p>
 <p>6 second Load/unload Very simple track loader. Simple to build and setup</p>	 <p>5 second Load/unload Universal pick and place that can be changed over in minutes</p>	 <p>2.5 second Load/unload Turn radius on end, cross drill Dedicated loader from bowl</p>	 <p>6 second Load/unload Simple track loader, adjustable and universal</p>	 <p>6 second Load/unload Unloaded carefully, no marks on finished face</p>
 <p>8 second Load/unload End work on shafts, OmniZip with hopper holds 1000 parts.</p>	 <p>3 second Load/unload Universal pick and place that can be changed over in minutes</p>	 <p>3.5 second Load/unload On C axis machine, load off center, drill and tap one hole, drill other.</p>	 <p>4 second Load/unload Loader for family of parts, fast load time, simple change overs.</p>	 <p>12 second Load/Unload Both sides of part was mached. \$16,000</p>
 <p>Bar fed by OmniZip Extruded stock loaded by rear end loader, 3 second cycle time per part</p>	 <p>6 second Load/unload 5,000 part run, OD thread only. Built loader in 2 days for almost off the shelf delivery</p>	 <p>6.5 second Load/unload Family of parts done with simple loader. Change over time is only 5 minutes.</p>	 <p>6 second Load/unload Unloading was critical. They could not touch one another.</p>	 <p>8 second Load/Unload Held on ID, turned entire OD. .0003" total all over.</p>



Visit our website to see most of these loaders in action.

www.omni-turn.com

Give us a call for help with automation. We can help you design a system that you will build, or OmniTurn can deliver a turnkey system

High volume, dedicated application:

First off, what do we mean by "High Volume"? We take it to mean any job that will run longer than 6 months without having to change the setup. Notice that we look at the length of the run, not the number of parts. Automation of this type should be considered to be replacing operator costs and increase production rates. The cost of implementing a dedicated loader usually takes the 6 months to offset an operator's salary and overhead charge. Loaders that will be dedicated to one job do not need to be Convertible. This leave us to play with speed and price. Dedicated loaders can be simple to design and implement since they are built around doing only one job. Usually load times are around the 3 seconds. However there are cases where we have been down around 1.2 seconds.

To "Bowl" or "not to Bowl"? Is this a question?

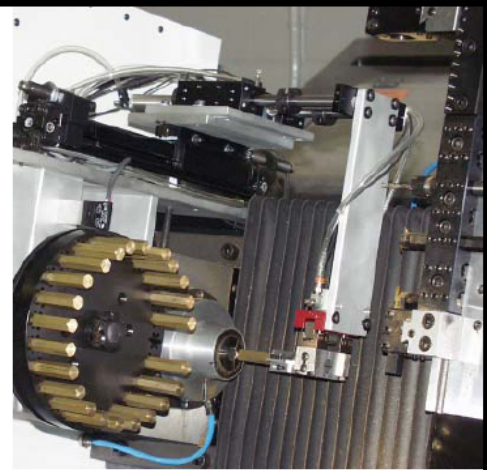
Most customers assume that a bowl is required for long running production automation. OmniTurn wonders how often the bowl is really needed? We find in many applications having an operator once in a while fill an in feed track is more cost efficient. You could make argue that automation is implemented to remove operator intervention. However there are still reasons to keep an operator near the setup: Tool life, tolerance maintenance, part outflow safeguarding, chip removal, etc. While the operator is maintaining the other issues of the work cell, they could fill the in feed track. If the track holds at 30 minutes of parts, it still frees the operator for other duties and still load a number of automated OmniTurns. After a job has been up and running for a while it is a better time to determine if the purchase of a bowl is justified. If your automation is designed to work with a bowl, then the addition of it at a later date is simple!

Similar part automation:

There are many instances where part family production is critical to making a product economically. Here we have a case where automation will be needed for a long time, but must be convertible enough to handle variations in the blank part. This could be variations in lengths, diameters, shapes, etc. If the parts all maintain some basic characteristics it is possible to build automation that can be changed over quickly. Here the 3rd item to be left out could be either the speed or price. In come cases we can build systems that are convertible and fast at a higher price. Or one that is convertible and less expensive but not as fast. The defining issue is usually the lot size and how often the loader will have to be changed over.

Simple automation:

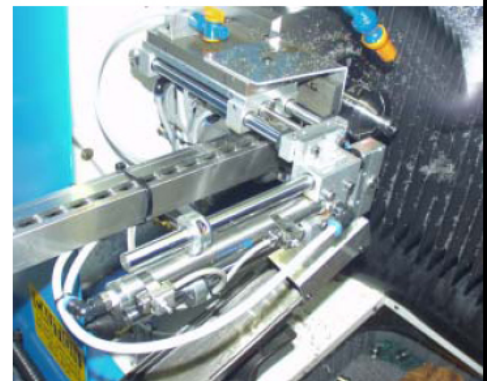
Here the issues are usually price and delivery. Many jobs will have to be in production and running within a week or two. So speed of getting the loader up and running is important. The other issue is price. In many cases the job will only be on the shop floor for a few weeks or less. This does not warrant spending thousands and taking weeks of a tool maker's time. Here OmniTurn has come up with simple loader ideas and implemented them many times over the years very successfully. With the simple type we are happy to help you build your own, or build a turnkey for you. The most important thought to remember that there is such a thing as SIMPLE automation. A few hours of tinkering can save hundreds of hours of operator's costs.



Pick and place for delicate parts



Simple track loader with in feed bin



High volumn production - FAST



Very simple table mounted system



NEW OMNITURN AUTOMATIC REAR END LOADER AND FEEDER

Here is a universal answer for all types of part and bar feed rear end loading. The new line of OmniTurn Zip loaders has been designed around what end users have been asking for. **It is fast!** If you are loading parts for secondary operations its cycle time is under 5 seconds - part to part. **Versatile:** will load and cycle bars up to 24" long. **Smart:** Is programmable to act as a smart dead stop. The slide will repeat to within +/- .0015". **Large Capacity:** up to 400 1/2" diameter blanks per loading. If you have a 30 second machine time, that turns into almost 4 hours of unattended run time.

Repeatability: .0015"
Programmable from keypad
2" to 24" part lengths
1/4" to 1" diameter
Fast cycle time: 5 seconds

Visit www.omni-turn.com for video of the OmniZip in action

Compact size: 28" x 71"



FastZip:

\$8,600

DIRECT DRIVES FOR ATTACHMENTS

Over the last 10 years OmniTurn has helped automate more than a few Hardinge lathes. We have been advocating the addition of both 2 and 5hp variable speed drives. These systems have proven that they are reliable and up to the task of supporting the requirements placed on them. However as time has gone on we have found ways to improve the systems. With most retrofits,

additional bearings, and a shaft the shiv rides on that wears out causing vibration and noise.

The clutch/brake assembly also add additional mass and inertia problems. There is also the issue of additional bearings and drive shafts included in the system when they are not really needed.

OmniTurn has come up with a system where the intermediate shivs, belts, and drives are no longer needed. You can remove all the heavy belts and pulley and replace them with a single belt and simple, smaller pulleys. The systems run much smoother, quieter, and with much less inertia. Older 2hp systems that had problems shutting down while running shorter cycles are given a new life with these direct drive system. The new belt and pulleys take only 2-3 hours to install.



the spindle drive includes a vari-shiv drive belt for speed adjustment and a clutch/brake assembly. These two items add components that slow down and diminish the system's overall performance.

The vari-shiv belt system takes much more power to drive than a standard belt system.

The pulleys are 5 times larger than a standard belt pulley. The inertia added by these pulleys is significant in hindering the stopping and starting of the spindle.

The belts for the vari-shiv are very thick and require significant additional power to drive.

The vari-shiv system adds an intermediate shaft with second belt. More belt issues,



Parts only - pulleys, belt, and motor adapter. \$550.00

Parts and installation \$950.00

Note: The old spindle drive pulley must be returned to OmniTurn. The price is based on a pulley exchange.

TRIPLEAIR BAR FEEDS



- Powder coated finish for long life
- End of bar switch - standard
- Bar hooks - standard
- Water trap and lubricator
- Pressure gauge
- Flow control regulator
- Kill switch
- Made in America

Complete bar feed systems

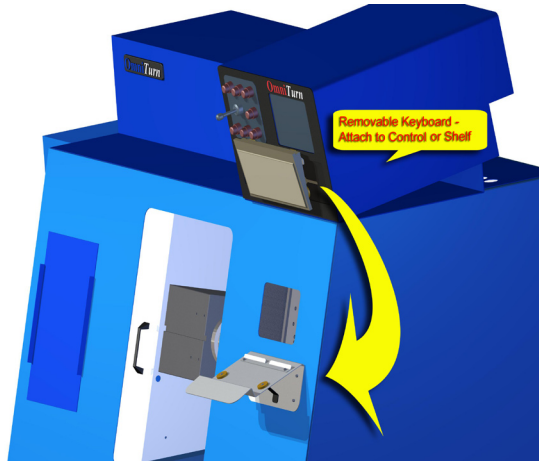
6' x 5/8"	Pt# 7258	\$3,500
12' x 5/8"	Pt# 14458	\$3,500
6' x 1-1/16"	Pt# 72116	\$3,500
12' x 1-1/16"	Pt# 144116	\$3,500

Bar feed tube and pusher only - for change overs

6' x 5/8"	Pt# BT-7258	\$600
12' x 5/8"	Pt# BT-14458	\$670
6' x 1-1/16"	Pt# BT-72116	\$640
12' x 1-1/16"	Pt# BT-144116	\$730

ACCESSORIES FOR YOUR OMNITURN

Keyboard Kit for GT-75

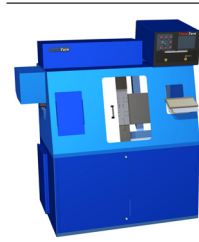


Features:

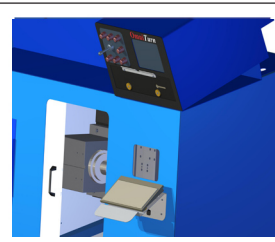
Kit works with new style keyboard - Designed for use with GT-75

Shelf and hardware for existing new style keyboard installation..... \$105

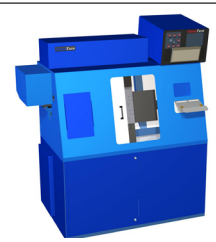
Replacing old style membrane keyboard..... \$265



GT with keyboard on shelf

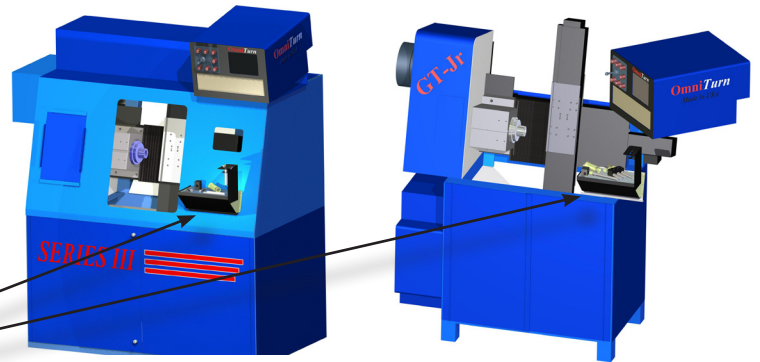
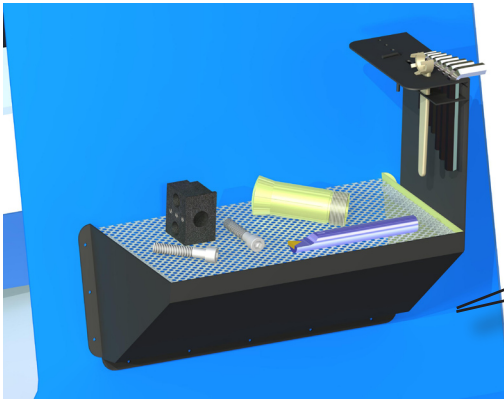


GT with keyboard on shelf



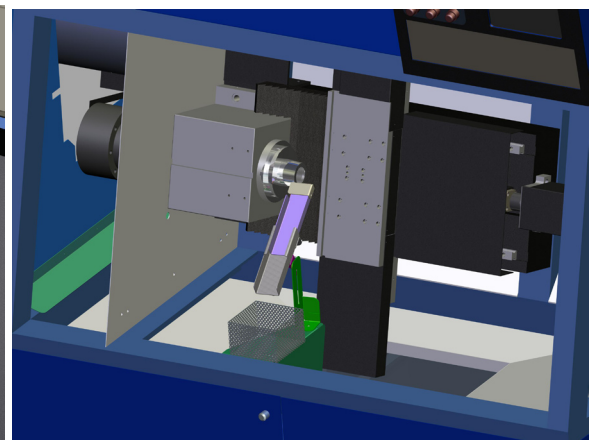
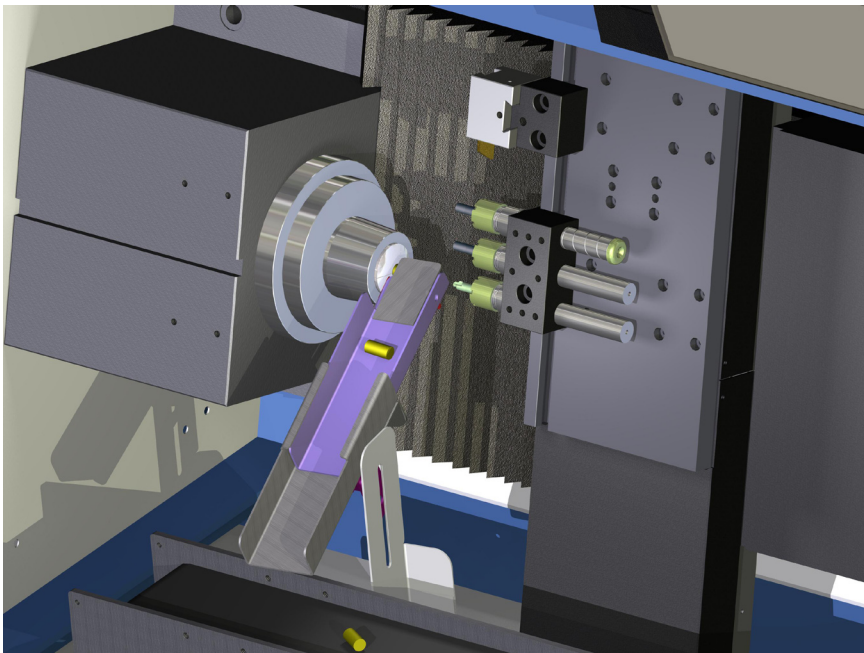
GT with keyboard on control from right

Tooling Tray



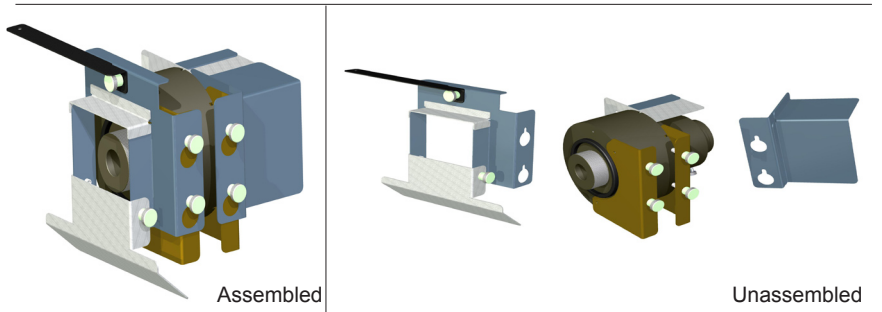
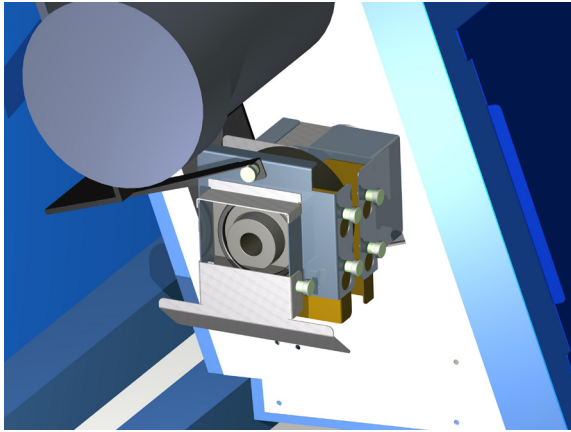
This is a convenient tray that is mounted right on your Omniturn machine to hold all your tools and has a built in perforated drainage tray to catch any coolant and small shavings.....\$145.00

Shoot Type Parts Catcher



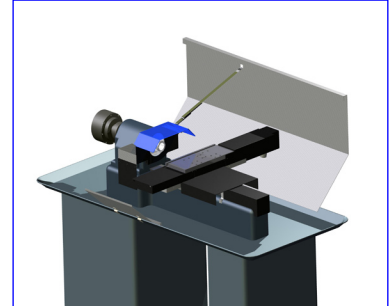
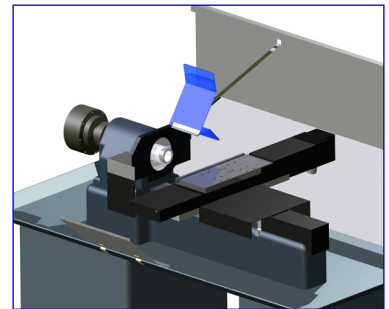
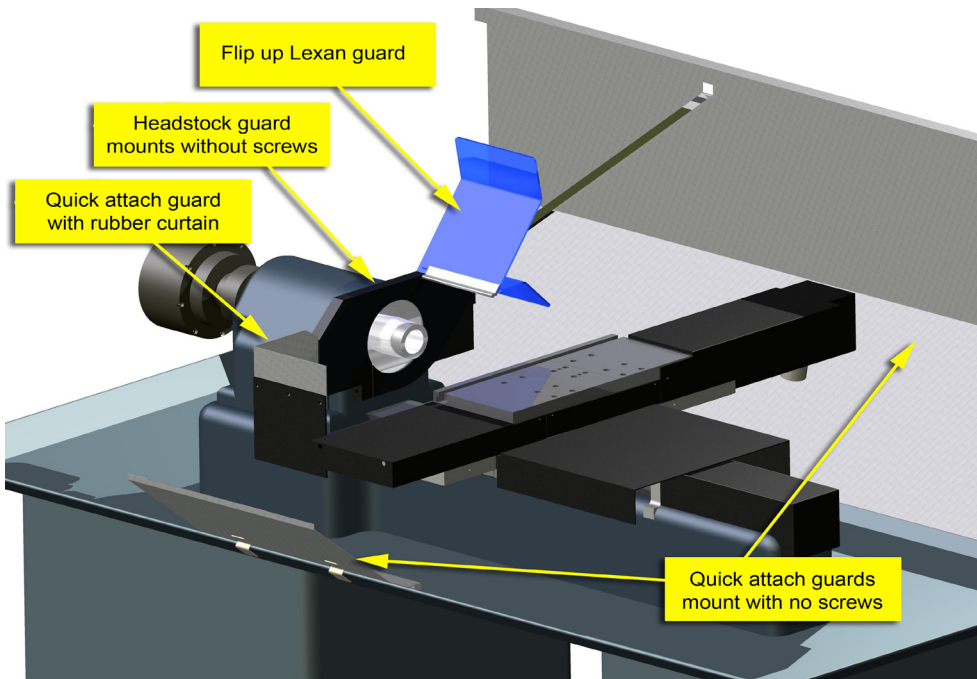
Finally, a retractable parts catcher that works well with barfeed cutoff parts and automatic loaders. Installs on all GT-75's & GT-Jr's in the field. Pneumatic operated. Can be used with either a parts conveyor (left) or catch basket (above).....\$950.00

Dunham Shield in GT



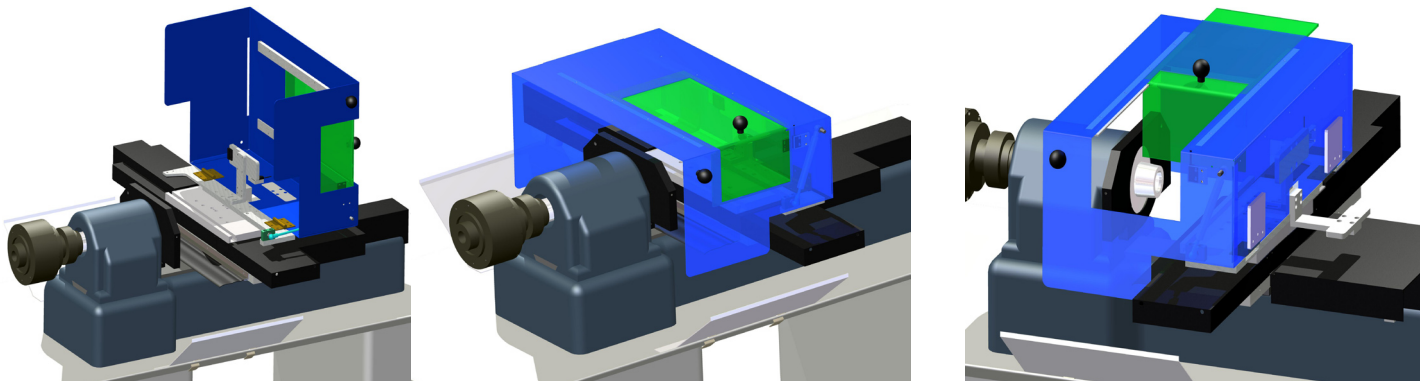
Keep your spindle compartment clean and free of coolant and mess. Installs on Dunham collet closure without any drilling & tapping, NO modifications. This contains the coolant from both the back end of the collet closure and what comes out through the draw tube alignment pin. Quick easy & access for collet adjustment & maintenance. A rear shield keeps the coolant from dripping out the back of the machine. All coolant is returned to the machine.....\$325

Splash Guard for Attachments



We have kits available for all styles of Hardinge. All versions install in minutes. Keep your shop clean and your operators dry.....\$575

Enclosure for Attachments



We have kits available for all styles of Hardinge. All versions install in minutes. Keep your shop clean and your operators dry.....\$575

Mounting feet for GT-75 and GT-Jr



Feet - 4 per set **691-13-001** \$59.00
 Feet with vibration pads - 4 per set **691-13-001-vibration** \$72.00

Air Lubricator Assembly



697-11-003 \$92.00

Computer power supply



995-16-009 \$79.00

Work lamp kit for GT-75



Work lamp kit for GT-75 **491-11-005** \$79.00

Collet close confirmation pneumatic switch



697-09-100 \$89.00

Encoder Cable



995-07-003 \$53.00

Dunham Collet closer draw tube only for GT-75 and GT-Jr



693-08-211 \$202.00

Watts double regulator Assembly



997-11-101 \$79.00

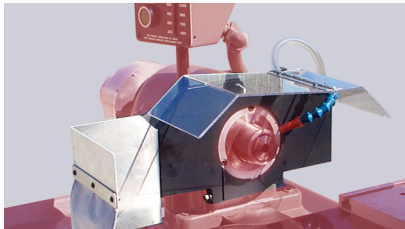
Coolant pumps

Standard 1/8 hp pump only **696-16-001** \$240.00
 Mounting flange for pump **696-01-001** \$29.00



Heavy Duty 1/4 hp pump with mounting flange **696-16-001HD** \$495.00

The Splash Guard System that is as easy to install and use as the OmniTurn!



Headstock Only Guard Kit \$250.00
 Replacement Lexan Guards \$49.00
 Complete Set-Up \$425.00

Ballscrews for all OmniTurn machines.

Note: The screw must be cut to length for installation.



Ballscrew **992-08-011** \$769.00

Ballscrew & thrust bearing **992-08-002** \$987.00

Thrust bearing assembly



992-08-003 \$ 219.00



Linear way assembly includes 2 bearing block trucks. 2 assemblies needed per axis
 X axis 10" travel - 18" long (460 mm) **992-08-004** \$448.00

X axis 12" travel - 21" long (520 mm) **992-08-005** \$476.00

Z axis 5" travel - 10" long (280 mm) **392-08-001** \$448.00

Z axis 8" travel **992-08-004** \$448.00

Bearing block trucks only - 2 per set **992-08-012** \$242.00

Motor Coupling

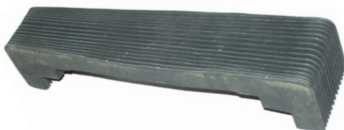


992-11-002 \$45.00

Grease gun kit

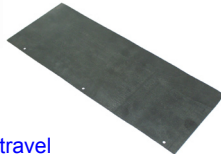
GGK-HD \$49.00
 Grease only - GGG \$10.00

Bellows cover - GT-75 and GT-Jr



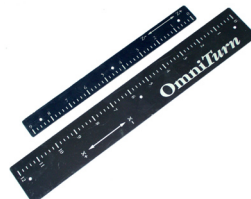
692-11-001 \$172.00

Z axis way cover - Attachments



392-11-001 5" travel \$25.00
392-11-002 8" travel \$30.00

Axis scales



992-04-002 Z axis scale \$16.00
992-04-001 X axis scale \$22.00

Spindle bearings for:

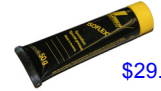
OmniTurn GT-75
 OmniTurn GT-Jr
 Hardinge HSL, DSM, DV-59
 HLV, DSMA, ASM



693-08-106 \$475.00
693-08-105 - Nilos Seal \$ 25.00

Hardinge HC, AHC, HNC **693-08-107** \$675.00

Grease for spindle bearings **004026-221** \$29.50



Spindle encoder for all machines



Encoder **995-16-005** \$359.00

Encoder belts

Encoder belt - GT-75 (MX315) All attachments except HLV **993-21-001** \$14.00

Encoder belt - GT-JR (MX280) **593-21-001** \$14.00

093-21-001 HLV or HLV-H \$19.00



Encoder pulley - encoder side Aluminum



995-22-001 (aluminum type) \$49.00

Encoder pulley - Spindle side



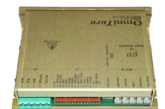
GT-75 and GT-Jr **693-22-001** \$42.00
 DSM, DV **193-22-001** \$42.00
 HSL **193-22-001** \$42.00
 HC, AHC, HNC **293-22-001** \$42.00

Axis motors - All OmniTurn systems use the same axis motor.



995-16-100 - 1 year warranty \$911.00

OmniTurn Axis Amplifier



995-16-007 \$479.00

Core charge of \$100 will be charged and credited back when the old amp is returned.

AMC Axis Amplifier with exchange



995-16-002 Update for Glentek motors \$395.00

Axis motor thermal overload



QMC and CMC motors
 Element only - J15 \$18 Thermal overload
 Glentek motors
 Element only -W43 \$24 **995-15-010** \$79.00

Spindle drive belts



Spindle drive belt GT-75 / GT-Jr

- PolyV 310J10 633-21-001 \$29.00
- PolyV 290J10 633-21-002 \$29.00
- PolyV 360J10 633-21-004 \$29.00



Spindle drive belt C axis cog type

- 663-21-001 (for GT-75 & GT-Jr) \$39.00
- 300H100



Spindle drive belt - C axis - Herringbone type

- 693-21-001 \$39.00

Monitor Assembly with LCD screen

- 995-09-102 \$485.00



Monitor card for motherboard

- 995-17-009 \$100.00

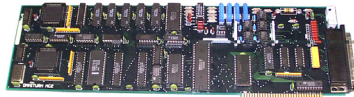
Motherboard with memory, Processor, and fan



- 995-17-010 \$595.00

Core charge of \$100 will be charged and credited back when the old amp is returned.

MC2 motion control card - 995-17-003



- Repair - 90 day warranty \$450.00
- Exchange repair - 90 day warranty \$750.00
- Replacement - 1 year warranty \$1,900.00

MC2-B CARD 995-17-004

Keyboard

- 995-16-001 \$149.00
- Sealed & Magnetic 995-16-000 \$195.00



12V relay



- Relay 999-15-005 \$19.00
- Socket for relay - 999-15-006 \$13.00

Dunham collet close rebuilt kit, includes seals and bearings



- Dunham rebuild kit \$230.00
- Dunham bearings only \$205.00
- Dunham seal kit with drawtube seal \$48.00
- Dunham Seal Kit 993-09-002 \$25.00



Control push buttons and switches:

Power on button assembly

Yellow, illuminated, maintained



- 995-12-101 \$39.00

Servo On button assembly

Blue, illuminated, momentary



- 995-12-102 \$36.00

Cycle start / on indicator assembly

Green, illuminated, momentary



- 995-12-106 \$36.00

Motion stop button assembly

Red, illuminated, momentary



- 995-12-105 \$36.00

Spindle drive Auto/Off switch

Black, 2 pos. selector, maintained



- 995-12-104 \$29.00

Spindle speed override dial assemb.



- 995-15-009 \$ 26.00

Speed potentiometer



Jog switch assembly

- 995-12-107 \$138.00

Emergency stop push button

Red, push to lock, twist release



- 995-12-103 \$37.00

Operator station push buttons and switches:

- 998-00-000 \$382.00

Collet close push button assembly

Red, momentary



- 998-12-101 \$21.00

Collet open push button assembly

green, momentary



- 998-12-102 \$21.00

Cycle start palm button assembly

Black, momentary



- 998-12-103 \$47.00

Emergency stop push button

Red, maintained, twist to unlock



- 998-12-104 \$37.00

Hard Drive - 995-09-003 \$125.00

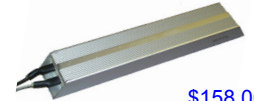


Spindle drive inverters

- GPD 315 - will handle up to 5hp 924-16-001 \$795.00

Braking resistors

- 5HP 914-15-001 \$158.00



Programming manual



- Programming manual \$60.00
- Parts Book Free

Pins, sockets, cable jacket and plugs

- Pins: \$.95
- Socket: \$.95
- Extractor: \$25
- PolyTuff Fitting: \$19.00
- PolyTuff Jacket: \$2.50/foot
- 14 pin male connector: \$9.00
- 14 pin female connector: \$9.00

Festo single solenoid 12V

- 997-15-002 \$159.00



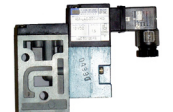
Festo double solenoid 12V

- 997-15-001 \$229.00



Mac single solenoid

- 997-15-004 - w/ manifold \$95.00
- 997-15-008 - no manifold \$75.00



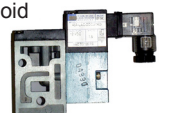
Mac double solenoid

- 997-15-003 - w/ manifold \$129.00
- 997-15-207 - no manifold \$98.00



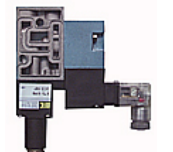
Mac single HIGH FLOW solenoid

- 885-01-001 High Flow Mac Solenoid - w/manifold \$109.00
- 885-01-002 High Flow Mac Solenoid - no manifold \$89.00



Mac Adjustable Valve / Manifold

- 997-15-004 \$129.00





Controls

\$4,500.00 - Complete rebuild of your 5hp Omniturn control up to current standards (we will reduce the cost if any parts are reusable) (F.O.B. Oregon)

\$5,500.00 - Omniturn 5hp control (sometimes it's good to have a second control on hand to prevent down time for those important jobs) (F.O.B. Oregon)

\$4,500.00 - Exchange program, we will exchange your Omniturn 5hp control for a complete rebuilt one to today's standards (F.O.B. Oregon)

ADDITIONAL M FUNCTIONS

Additional I/O can be added to machines with normal spindle drives or C axis. The PLC is supplied on a panel with marked terminals.

The OmniTurn control can read inputs and set outputs on the PLC. Simple M functions can be configured with programs configurable by the end user.

Simple automatic loaders: The PLC and configuration of M functions can be used to drive simple automatic loaders. Use a separate PLC and contact the factory for information on interfacing with the OmniTurn.

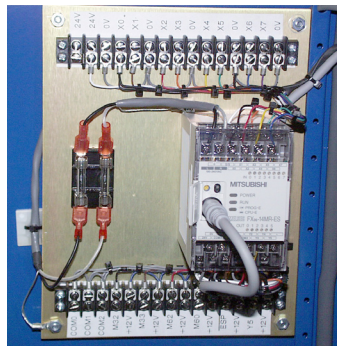
Magazine Barfeed: The PLC kit is perfect for interfacing the OmniTurn to a magazine bar feed. The OmniTurn has built in a conditional M function that is used for an end of bar sequence.

M functions can be configured by the end user. Documentation is supplied in the manual to assist customers with this. A total of 10 M functions can be created and used in all programs on the machines.

The standard kit includes:

- 8 inputs - 24V DC (supplied by PLC)
- 6 outputs - configured for 12V DC for use with the OmniTurn power supply
- 2 solid state outputs
- 4 relay outputs with a common leg

The kit is configured with a number of standard M functions for inputs and outputs. A conditional input M function is also supplied.



DIAGNOSTICS CONSOLE



Intended for use by service tech's and customers with many machines. This console enables a service tech to easily test basic machine functions and diagnose simple problems.

Price **\$275.00**

Part # 995-16-015

Additional I/O kit

PART #	IN/OUT	PRICE
999-39-100	8/6	\$965.00
999-39-102	12/8	\$1150.00
999-39-103	16/14	\$1330.00

Please call for pricing on C-axis controls



OmniTurn GT-Jr

2 and 3 axis lathes for production
secondaries and bar work



OmniTurn GT-75

2 and 3 axis lathes for production
bar work and secondaries

Made in the
USA



Attachments and retrofits for Hardinge* and Hardinge type machines