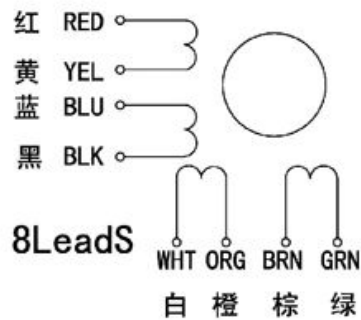
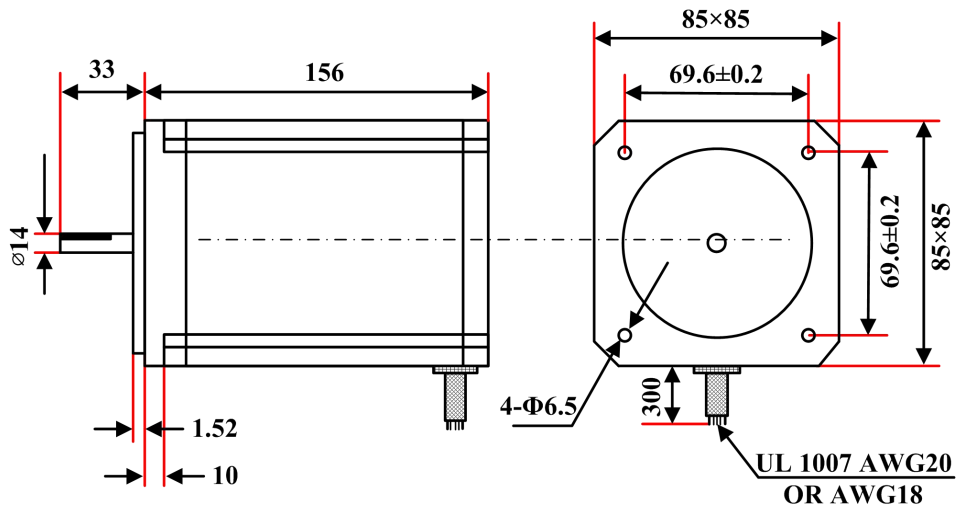


Hybrid stepper motor 85STH156-6208A



Specification

Stepper motor model number	85STH156-6208A
Step angle	1.8°
Current/phase	6.2A
Resistance/phase	0.75ohm
Phase inductance	9.0mH
Voltage/phase	4.65V
Number of Leads	8
Holding torque	12.2N.m
Motor length	156mm

Changzhou Weitong Electromechanical Co.,Ltd

www.wotomotor.com