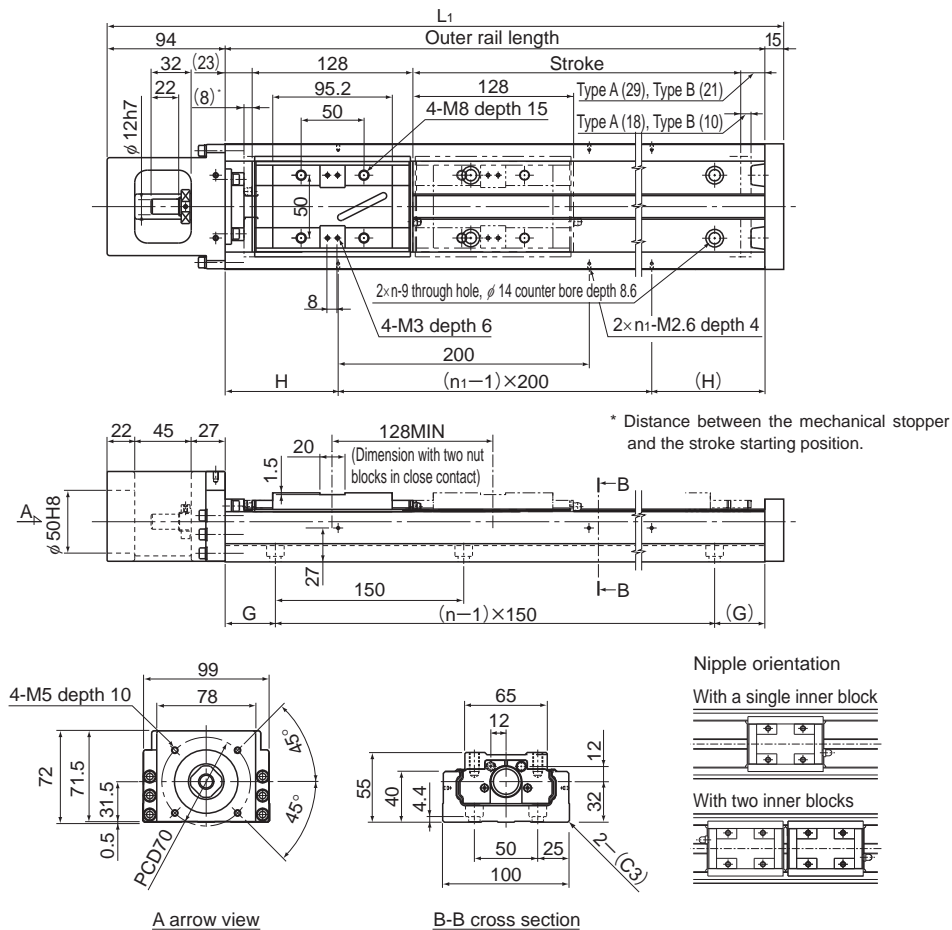


Model KR55 Standard Type

Model KR5520A (with a Single Long Nut Block)

Model KR5520B (with Two Long Nut Blocks)

For model number coding, see **A2-96**.



Stroke (mm) (stroke between mechanical stoppers)		Outer rail length (mm)	Overall length L_1 (mm)	H (mm)	G (mm)	n	n_1	Overall main unit mass (kg)	
Type A	Type B*							Type A	Type B
800(826)	680(698)	980	1089	90	40	7	5	19.9	21.6
900(926)	780(798)	1080	1189	40	15	8	6	21.7	23.4
1000(1026)	880(898)	1180	1289	90	65	8	6	23.4	25.1
1100(1126)	980(998)	1280	1389	40	40	9	7	25.1	26.8
1200(1226)	1080(1098)	1380	1489	90	15	10	7	26.9	28.6

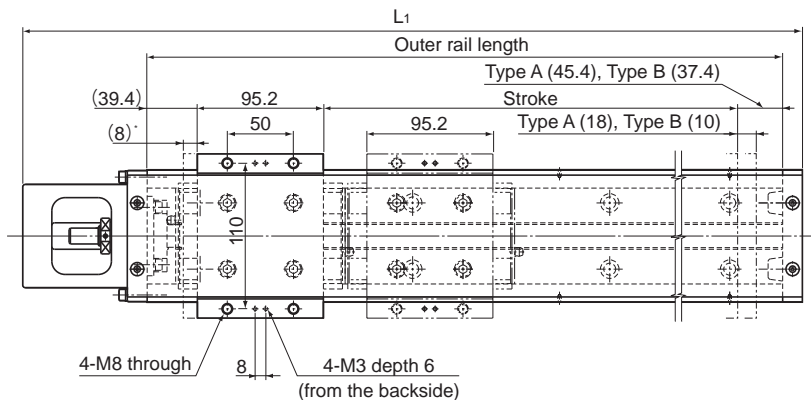
*Indicates a value when two inner blocks are in close contact with each other.

Model KR55 (with a Cover)

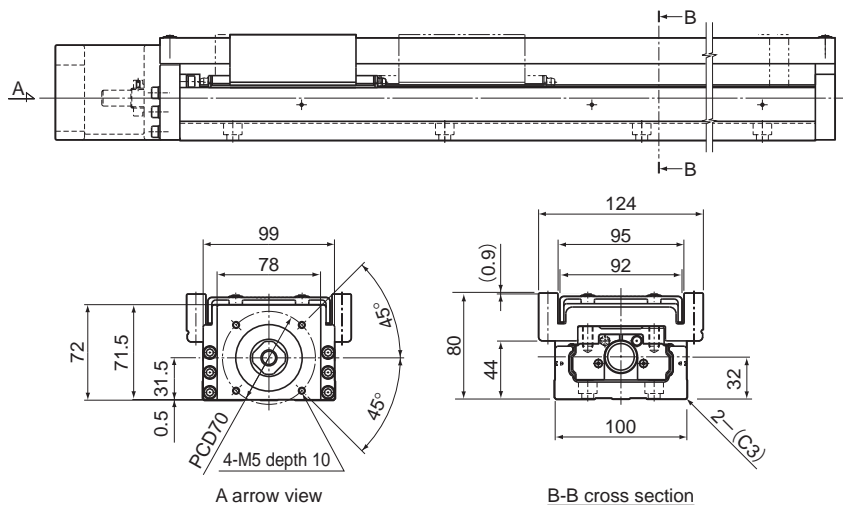
Model KR5520A (with a Single Long Nut Block)

Model KR5520B (with Two Long Nut Blocks)

For model number coding, see **A2-96**.



* Distance between the mechanical stopper and the stroke starting position.



Stroke (mm) (stroke between mechanical stoppers)		Outer rail length (mm)	Overall length L ₁ (mm)	Overall main unit mass (kg)	
Type A	Type B*			Type A	Type B
800(826)	680(698)	980	1089	22.7	26.2
900(926)	780(798)	1080	1189	24.6	28.1
1000(1026)	880(898)	1180	1289	26.4	29.9
1100(1126)	980(998)	1280	1389	28.1	31.6
1200(1226)	1080(1098)	1380	1489	30	33.5

*Indicates a value when two inner blocks are in close contact with each other.