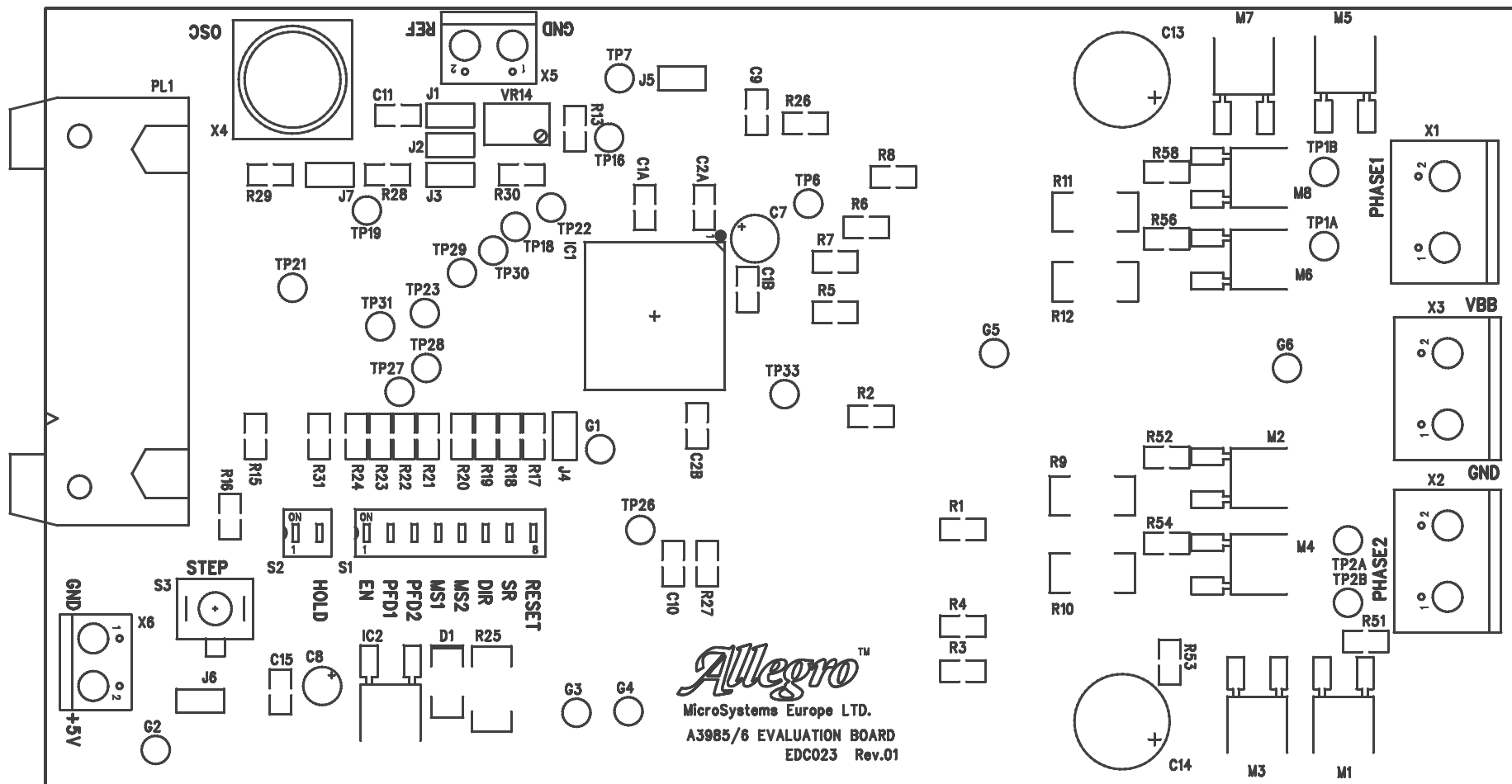
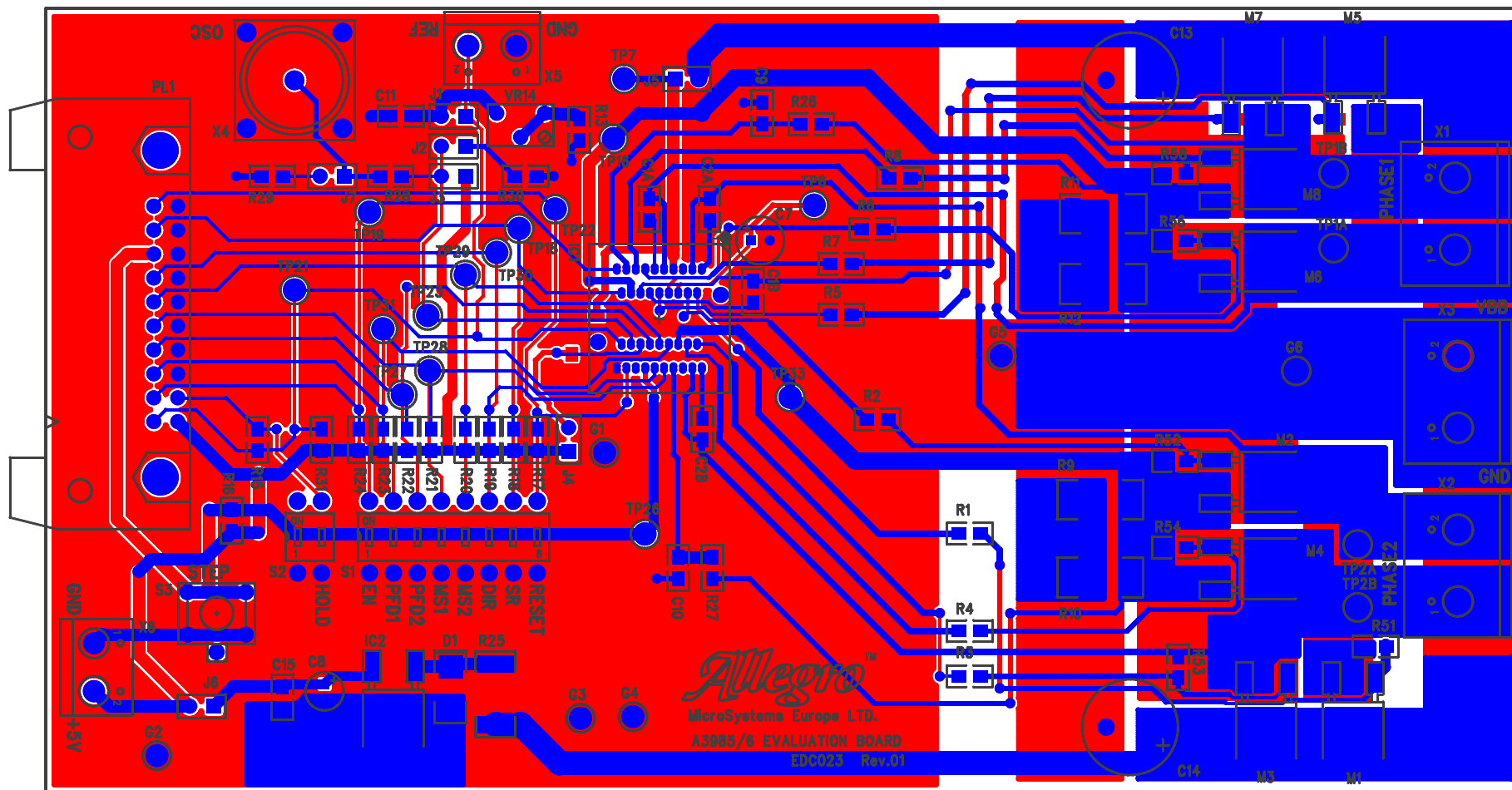
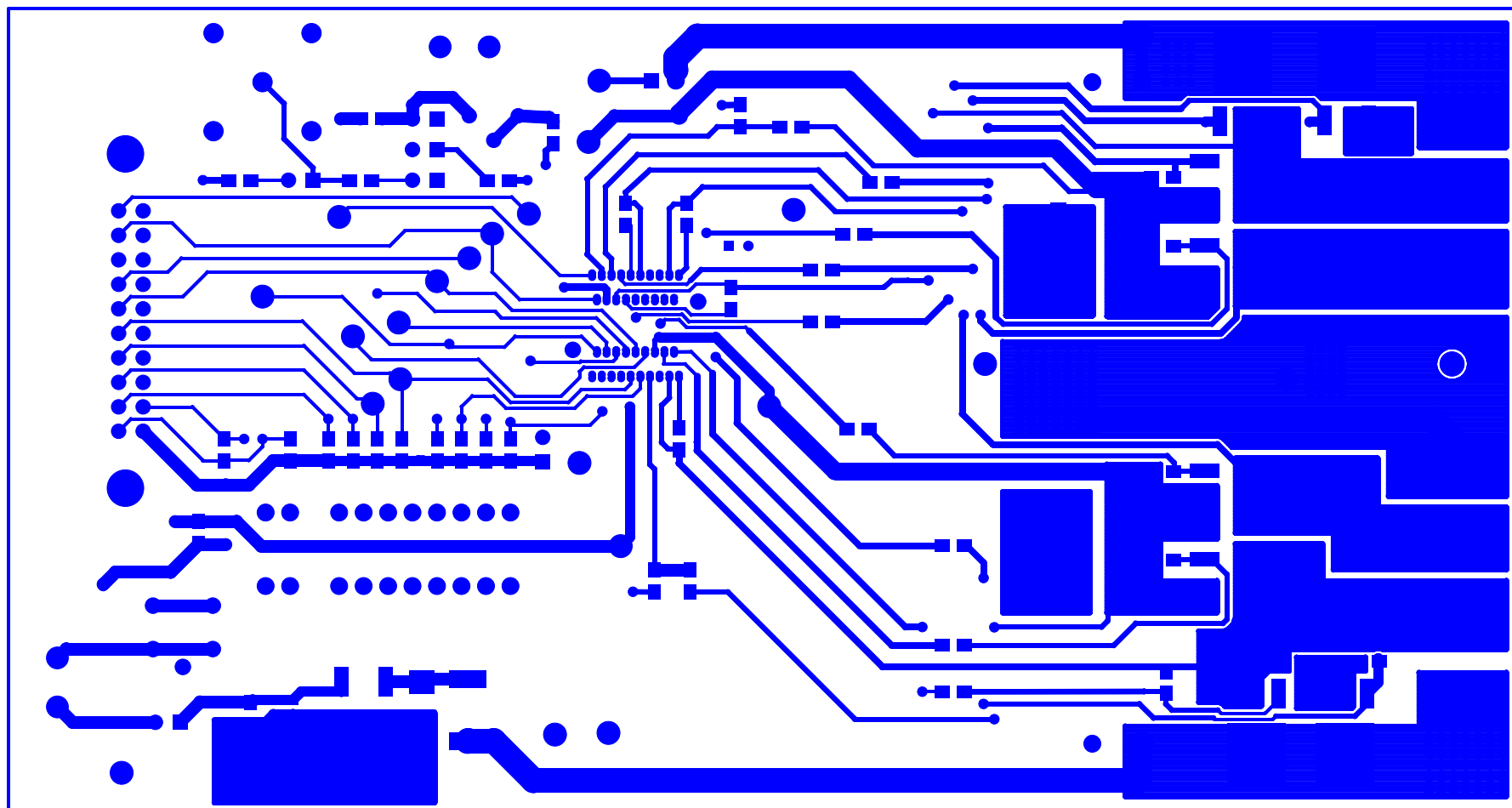
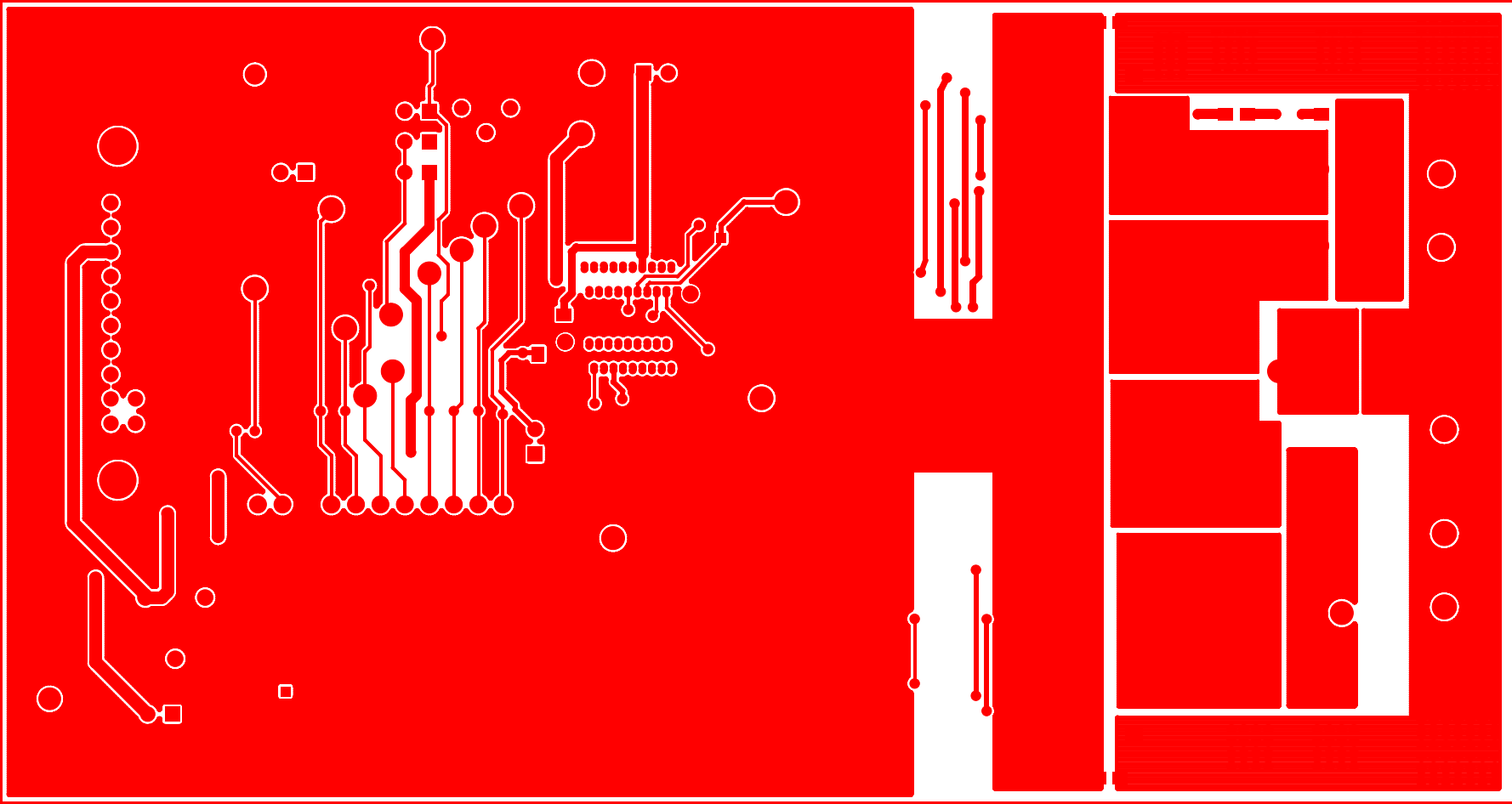


* C9,C10 not fitted.
R26,R27 Wire link









A3986 Demo Board Component List

All components to be RoHS compliant

Part	Value	Description	Package	RS Part
C1A	100n	Chip capacitor, ceramic, 20V	SMT 0805	464-6688
C1B	100n	Chip capacitor, ceramic, 20V	SMT 0805	464-6688
C2A	100n	Chip capacitor, ceramic, 20V	SMT 0805	464-6688
C2B	100n	Chip capacitor, ceramic, 20V	SMT 0805	464-6688
C3	100n	Chip capacitor, ceramic, 50V	SMT 0805	464-6688
C4	100n	Chip capacitor, ceramic, 50V	SMT 0805	464-6688
C5	100n	Chip capacitor, ceramic, 50V	SMT 0805	464-6688
C6	100n	Chip capacitor, ceramic, 10V	SMT 0805	464-6688
C7	10u	Alu, El'ytic, 35V 105C	5 / 2mm	414-9064
C8	10u	Alu, El'ytic, 16V 105C	4 / 1.5mm	414-9008
C9	Not Fitted			
C10	Not Fitted			
C11	100n	Chip capacitor, ceramic, 10V	SMT 0805	464-6688
C13	100u	Alu, Low R, El'ytic, 63V, 105C	10 / 5mm	315-0962
C14	100u	Alu, Low R, El'ytic, 63V, 105C	10 / 5mm	315-0962
C15	100n	Chip capacitor, ceramic, 10V	SMT 0805	464-6688
D1	BZG03C27	27V 3W Zener Diode	SMA (DO214)	245-6310
M1	IRFR024NPBF	Power MOSFET	D-PAK	540-9913
M2	IRFR024NPBF	Power MOSFET	D-PAK	540-9913
M3	IRFR024NPBF	Power MOSFET	D-PAK	540-9913
M4	IRFR024NPBF	Power MOSFET	D-PAK	540-9913
M5	IRFR024NPBF	Power MOSFET	D-PAK	540-9913
M6	IRFR024NPBF	Power MOSFET	D-PAK	540-9913
M7	IRFR024NPBF	Power MOSFET	D-PAK	540-9913
M8	IRFR024NPBF	Power MOSFET	D-PAK	540-9913
PL1	N3428-5302RB	IDC Connector, 20way, 3M	90deg	542-9125
X1	2-Way	Pheonix 2way Srew terminal	7.62mm	189-5966
X2	2-Way	Pheonix 2way Srew terminal	7.62mm	189-5966
X3	2-Way	Pheonix 2way Srew terminal	7.62mm	189-5966
X4	Not Fitted			
X5	2-Way	Weidmuller 2way Srew terminal	5.08mm	425-8720
X6	2-Way	Weidmuller 2way Srew terminal	5.08mm	425-8720
J1	2-Way	Single Row, 7mm, 2.54mm pitch	2.54mm	251-8086
J2	2-Way	Single Row, 7mm, 2.54mm pitch	2.54mm	251-8086
J3	2-Way	Single Row, 7mm, 2.54mm pitch	2.54mm	251-8086
J4	2-Way	Single Row, 7mm, 2.54mm pitch	2.54mm	251-8086
J5	2-Way	Single Row, 7mm, 2.54mm pitch	2.54mm	251-8086
J6	2-Way	Single Row, 7mm, 2.54mm pitch	2.54mm	251-8086
J7	Not Fitted		2.54mm	251-8086
S1	8-Way	DIP Switch, 8-pole	DIL-16	342-118
S2	2-Way	DIP Switch, 2-pole	DIL-4	342-095
S3	PTM	Switch, Tactile Push	6mm	378-6410
TPx/G	Test Points	Test Point 1.32mm 2mm Loop	1.32mm Hole	262-2214

Part	Value	Description	Package	RS Part
IC1	A3986	Dual H/Stepper FET Driver Wells CTI part no. 656J0382212	38TSSOP Socket	
IC2	MC75M05ABDT	Linear 5V regulator	D-PAK	516-5922
R1	33	Chip Resistor	SMT 0805	223-0225
R2	33	Chip Resistor	SMT 0805	223-0225
R3	33	Chip Resistor	SMT 0805	223-0225
R4	33	Chip Resistor	SMT 0805	223-0225
R5	33	Chip Resistor	SMT 0805	223-0225
R6	33	Chip Resistor	SMT 0805	223-0225
R7	33	Chip Resistor	SMT 0805	223-0225
R8	33	Chip Resistor	SMT 0805	223-0225
R9	0.1	1W Chip Resistor	SMT 2512	223-0972
R10	0.1	1W Chip Resistor	SMT 2512	223-0972
R11	0.1	1W Chip Resistor	SMT 2512	223-0972
R12	0.1	1W Chip Resistor	SMT 2512	223-0972
R13	2k2	Chip Resistor	SMT 0805	223-0477
VR14	20k	Multiturn Cermet Trim Resistor	6mm	521-9259
R15	1k	Chip Resistor	SMT 0805	223-0427
R16	10k	Chip Resistor	SMT 0805	223-0562
R17	10k	Chip Resistor	SMT 0805	223-0562
R18	10k	Chip Resistor	SMT 0805	223-0562
R19	10k	Chip Resistor	SMT 0805	223-0562
R20	10k	Chip Resistor	SMT 0805	223-0562
R21	10k	Chip Resistor	SMT 0805	223-0562
R22	10k	Chip Resistor	SMT 0805	223-0562
R23	10k	Chip Resistor	SMT 0805	223-0562
R24	10k	Chip Resistor	SMT 0805	223-0562
R25	390	Resistor, 1 watt	SMT 2512	224-0351
R26	0	Chip Resistor (shorting)	SMT 0805	223-0146
R27	0	Chip Resistor (shorting)	SMT 0805	223-0146
R28	Not Fitted			
R29	Not Fitted			
R30	10k	Chip Resistor	SMT 0805	223-0562
R31	22k	Chip Resistor	SMT 0805	223-0607
R51	470k	Chip Resistor	SMT 0805	223-0786
R52	470k	Chip Resistor	SMT 0805	223-0786
R53	470k	Chip Resistor	SMT 0805	223-0786
R54	470k	Chip Resistor	SMT 0805	223-0786
R55	470k	Chip Resistor	SMT 0805	223-0786
R56	470k	Chip Resistor	SMT 0805	223-0786
R57	470k	Chip Resistor	SMT 0805	223-0786
R58	470k	Chip Resistor	SMT 0805	223-0786
PCB	EDC023-R1	Printed Circuit Board		