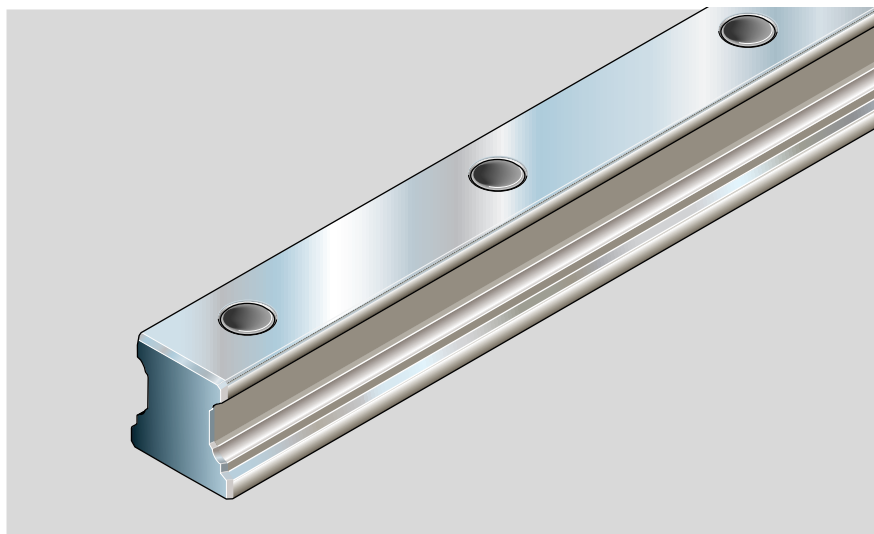


# Rexroth Ball Rail Systems

## Standard Guide Rails

### Guide rails 1605-0.-

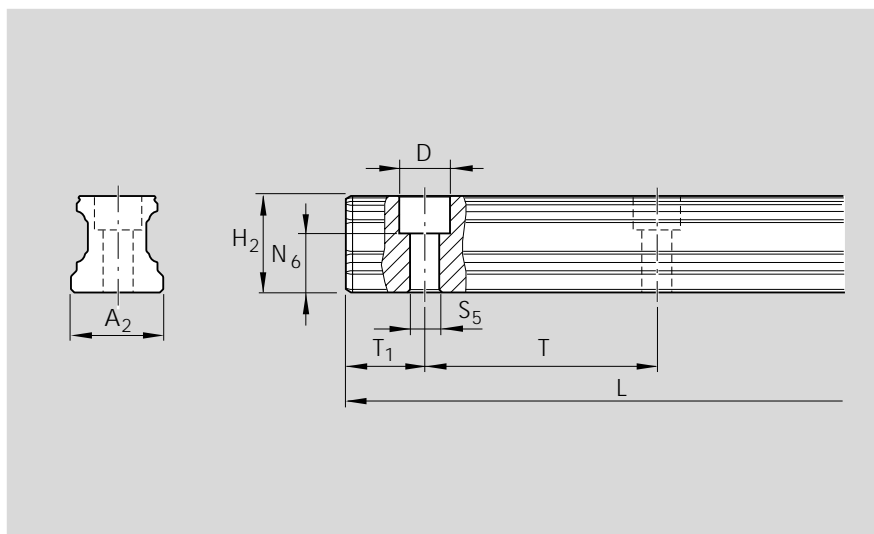
For mounting from above,  
with plastic mounting hole plugs  
(supplied)



### Part numbers and rail lengths

Size	Accuracy class	Guide rail		Spacing T (mm)	Recommended rail length				
		one-part	composite		Number of holes $n_B$ / Rail length L (mm)				
		Part number, Rail length L (mm)	Part number, Number of sections Rail length L (mm)						
15	UP	1605-109-31,....	1605-109-3,....	60	<div>2 / 116</div> <div>7 / 416</div> <div>12 / 716</div> <div>20 / 1196</div> <div>40 / 2396</div>				
	SP	1605-101-31,....	1605-101-3,....						
	P	1605-102-31,....	1605-102-3,....						
	H	1605-103-31,....	1605-103-3,....						
	N	1605-104-31,....	1605-104-3,....						
20	UP	1605-809-31,....	1605-809-3,....		2 / 116	7 / 416	12 / 716	20 / 1196	40 / 2396
	SP	1605-801-31,....	1605-801-3,....		3 / 176	8 / 476	13 / 776	22 / 1316	50 / 2996
	P	1605-802-31,....	1605-802-3,....		4 / 236	9 / 536	14 / 836	25 / 1496	60 / 3596
	H	1605-803-31,....	1605-803-3,....		5 / 296	10 / 596	16 / 956	30 / 1796	66 / 3956
	N	1605-804-31,....	1605-804-3,....		6 / 356	11 / 656	18 / 1076	35 / 2096	
25	UP	1605-209-31,....	1605-209-3,....		For size 15: max. 50/2996				
	SP	1605-201-31,....	1605-201-3,....						
	P	1605-202-31,....	1605-202-3,....						
	H	1605-203-31,....	1605-203-3,....						
	N	1605-204-31,....	1605-204-3,....						
30	UP	1605-709-31,....	1605-709-3,....	80	<div>2 / 156</div> <div>7 / 556</div> <div>12 / 956</div> <div>20 / 1596</div> <div>40 / 3196</div>				
	SP	1605-701-31,....	1605-701-3,....						
	P	1605-702-31,....	1605-702-3,....						
	H	1605-703-31,....	1605-703-3,....						
	N	1605-704-31,....	1605-704-3,....						
35	UP	1605-309-31,....	1605-309-3,....		2 / 156	7 / 556	12 / 956	20 / 1596	40 / 3196
	SP	1605-301-31,....	1605-301-3,....		3 / 236	8 / 636	13 / 1036	22 / 1756	50 / 3996
	P	1605-302-31,....	1605-302-3,....		4 / 316	9 / 716	14 / 1116	25 / 1996	
	H	1605-303-31,....	1605-303-3,....		5 / 396	10 / 796	16 / 1276	30 / 2396	
	N	1605-304-31,....	1605-304-3,....		6 / 476	11 / 876	18 / 1436	35 / 2796	
45	UP	1605-409-31,....	1605-409-3,....	105	<div>2 / 204</div> <div>7 / 729</div> <div>12 / 1254</div> <div>20 / 2094</div> <div>38 / 3984</div>				
	SP	1605-401-31,....	1605-401-3,....						
	P	1605-402-31,....	1605-402-3,....						
	H	1605-403-31,....	1605-403-3,....						
	N	1605-404-31,....	1605-404-3,....						
55	UP	1605-509-31,....	1605-509-3,....		2 / 234	7 / 834	12 / 1434	20 / 2394	
	SP	1605-501-31,....	1605-501-3,....		3 / 354	8 / 954	13 / 1554	22 / 2634	
	P	1605-502-31,....	1605-502-3,....		4 / 474	9 / 1074	14 / 1674	25 / 2994	
	H	1605-503-31,....	1605-503-3,....		5 / 594	10 / 1194	16 / 1914	30 / 3594	
	N	1605-504-31,....	1605-504-3,....		6 / 714	11 / 1314	18 / 2154	33 / 3954	
65	UP	1605-609-31,....	1605-609-3,....	150	<div>2 / 294</div> <div>7 / 1044</div> <div>12 / 1794</div> <div>20 / 2994</div>				
	SP	1605-601-31,....	1605-601-3,....						
	P	1605-602-31,....	1605-602-3,....						
	H	1605-603-31,....	1605-603-3,....						
	N	1605-604-31,....	1605-604-3,....						
	UP	1605-609-31,....	1605-609-3,....		3 / 444	8 / 1194	13 / 1944	22 / 3294	
	SP	1605-601-31,....	1605-601-3,....		4 / 594	9 / 1344	14 / 2094	25 / 3744	
	P	1605-602-31,....	1605-602-3,....		5 / 744	10 / 1494	16 / 2394	26 / 3894	
	H	1605-603-31,....	1605-603-3,....		6 / 894	11 / 1644	18 / 2694		
	N	1605-604-31,....	1605-604-3,....						

## Dimensions and masses



Size	Dimension (mm)									Mass (kg/m)
	$A_2$	$H_2^{1)}$	$N_6^{\pm 0.5}$	$D$	$S_5$	$T_{1S_1}^{+0.5}$	$T_{1\min}$	$T$	$L_{\max}^{2)}$	
15	15	16.20	10.3	7.4	4.4	28.0	10	60	4000	1.4
20	20	20.55	13.2	9.4	6.0	28.0	10	60	4000	2.4
25	23	24.25	15.2	11.0	7.0	28.0	10	60	4000	3.2
30	28	28.35	17.0	15.0	9.0	38.0	12	80	4000	5.0
35	34	31.85	20.5	15.0	9.0	38.0	12	80	4000	6.8
45	45	39.85	23.5	20.0	14.0	50.5	16	105	4000	10.5
55	53	47.85	29.0	24.0	16.0	58.0	18	120	4000	16.2
65	63	59.85	38.5	26.0	18.0	73.0	20	150	4000	22.4

<sup>1)</sup> Dimension  $H_2$  without rail seal cover strip

<sup>2)</sup> For sizes 20 – 45, one-piece guide rails up to approx. 6000 mm in length can be supplied in special cases.